



Commuter Car Park Program

Edmondson Park

Project update

July 2020



Artist's impression of the new multi-storey car park, subject to detailed design

Transport for NSW is delivering more commuter car parking at Edmondson Park Station to provide you with more convenient access to public transport and reduce congestion on our roads. Key benefits of the project include:

- A multi-storey car park with up to 1,000 additional parking spaces
- Free parking for up to 18 hours with Transport Park & Ride
- Additional accessible parking spaces
- Lift access
- Road pavement and pedestrian pathway upgrades
- CCTV, lighting and wayfinding for improved safety and security
- Motorbike parking
- Provision for electric vehicle charging spaces is also being assessed.

The car park is expected to be completed and open to the community in mid-2021.

For more information call **1800 684 490**

Email projects@transport.nsw.gov.au or visit www.transport.nsw.gov.au/edmondsonpark

For urgent enquiries or complaints regarding construction activities, please call 24 hours **1800 775 465**

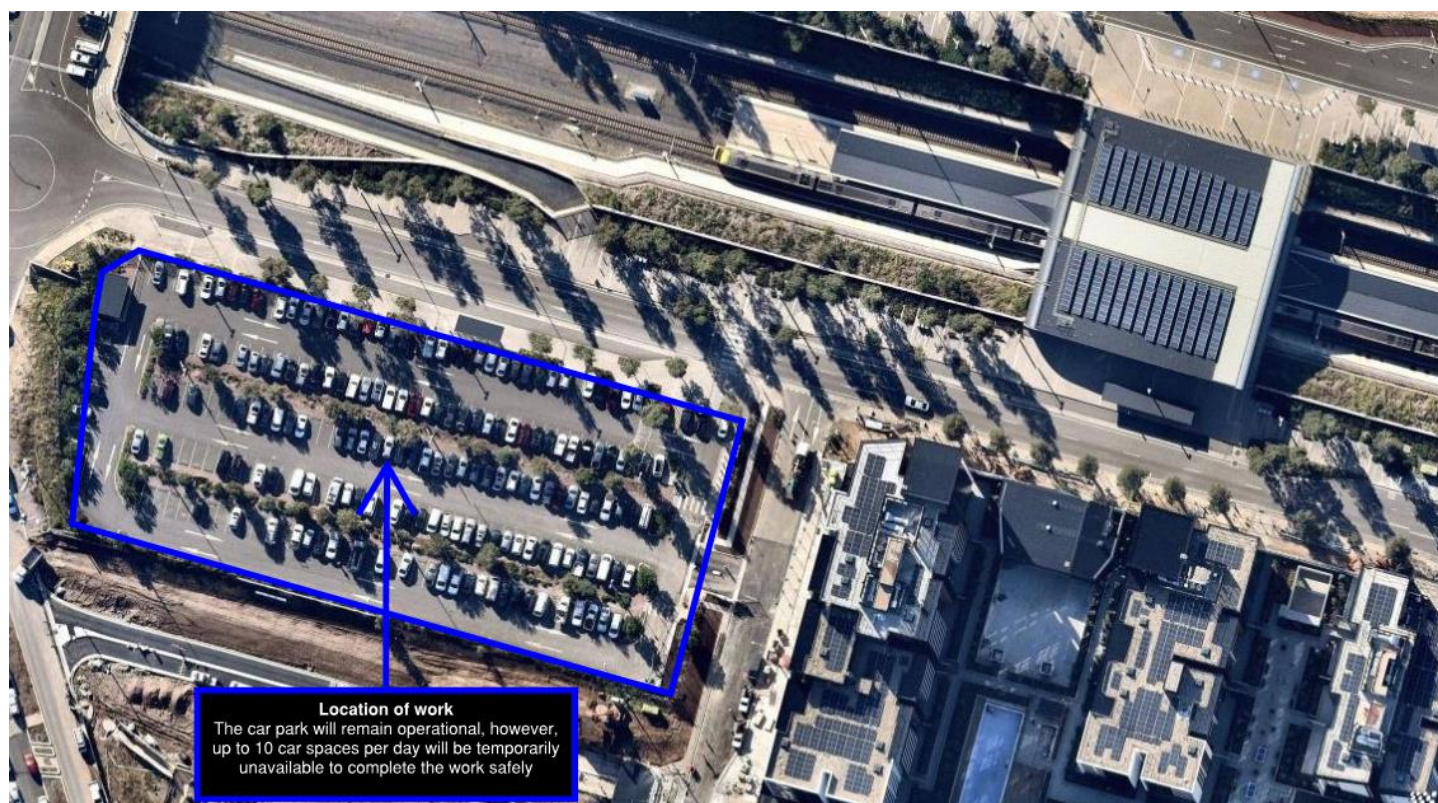
Upcoming construction work

Site investigation work for the new multi-storey car park will take place in the existing southern commuter car park from **Wednesday 29 July 2020 – Friday 7 August 2020**.

We will be completing five bore holes to investigate the ground conditions of the site before major construction begins in August. The car park will remain open to customers however some sections, including up to 10 car spaces, will be temporarily closed during this period in order to complete the work safely.

Work will take place within standard construction hours between **7am-6pm Monday to Friday** and noise will be kept to low levels.

Location of investigation work

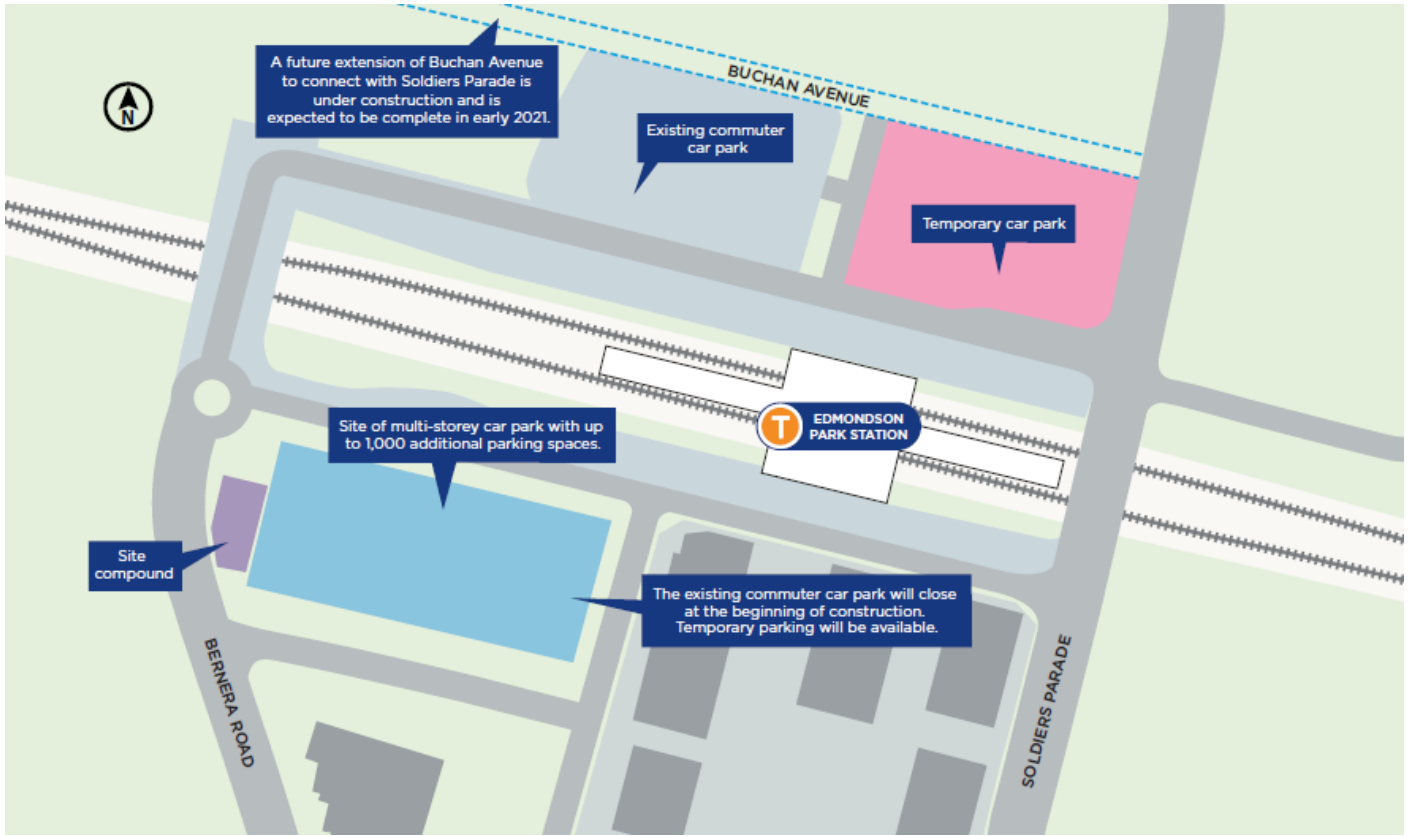


Temporary parking during construction

During construction of the new multi-storey car park, the existing southern car park will close in order to complete the work safely.

On behalf of Transport for NSW, Landcom have begun work on a temporary car park on vacant land north of the station to minimise disruption during construction. The temporary car park is targeted for completion in August when major construction of the multi-storey car park begins.

Site map



Keeping you up to date

We will continue to keep the community informed with regular project updates. More information is available on our website www.transport.nsw.gov.au/edmondsonpark. If you would like to sign up to our project distribution list, please contact us on **1800 684 490** or email projects@transport.nsw.gov.au and we will email you regular updates.

For all urgent enquiries or complaints regarding construction activities, please call our **24-hour Construction Response Line** on **1800 775 465**.



This document contains important information about public transport projects in your area. If you require the services of an interpreter, please contact the Translating and Interpreting Service on **131 450** and ask them to call Transport for NSW on **(02) 9200 0200**. The interpreter will then assist you with translation.

Hindi

इस दस्तावेज में आपके इलाके के सार्वजनिक-परिवहन परियोजनाओं के बारे में महत्वपूर्ण जानकारी सम्मिलित है। यदि आपको दुभाषिणी की सेवा की आवश्यकता है तो कृपया 131 450 पर ट्रेन्सलैटिंग एन्ड इन्टर्प्रेटिंग सर्विस से संपर्क करें और उनसे (02) 9200 0200 पर ट्रेन्सपोर्ट फ़ॉर एनएसडब्ल्यू को फ़ोन करने के लिए कहें। उसके बाद दुभाषिणी आपको अनुवाद करने में सहायता देगा।

Arabic

تتضمن هذه الوثيقة معلومات عن مشاريع النقل العام في منطقتكم . إذا كنتم بحاجة الى خدمات مترجم، الرجاء الإتصال بخدمة الترجمة الشفهية والخطية على رقم 131 450 واطلبوا منهم ان يتصلوا بمصلحة المواصلات في نيو ساوث ويلز على رقم 9200 0200 (02). عندها يساعدهم المترجم بالترجمة .

For more information call **1800 684 490**

Email projects@transport.nsw.gov.au or visit www.transport.nsw.gov.au/edmondsonpark

For urgent enquiries or complaints regarding construction activities, please call 24 hours **1800 775 465**