

Commuter Car Park Program

Edmondson Park

Project update

December 2020/January 2021



Construction progress on the new multi-storey car park at Edmondson Park, December 2020

Transport for NSW is delivering more commuter car parking at Edmondson Park Station to provide you with more convenient access to public transport and reduce congestion on our roads.

The car park located south of the station will have approximately 1,000 additional commuter spaces and is expected to be completed and open to the community in mid-2021.

Progress update

In November, two tower cranes were delivered and installed on site (pictured right). The cranes are being used to lift concrete, steel and materials to form the structure of the new car park.

Civil works are currently taking place with excavation progressing through the site. Removal of pile spoil and excavation material will be an ongoing task for the next few weeks.



Upcoming construction work

During December and January, the following work will occur on the new multi-storey car park:

- Construction of stair and lift cores
- Excavation, formwork and concreting for stair bases and footings
- Commencement of major concrete pours
- Construction of load bearing walls and columns.

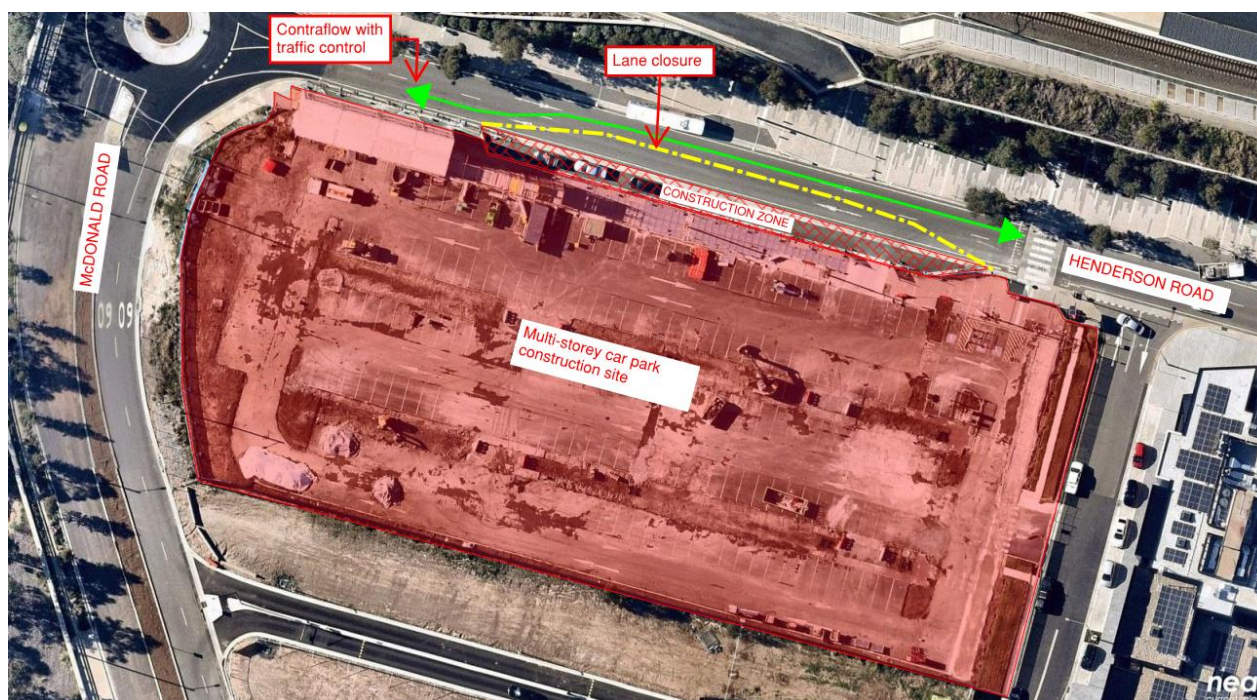
Work hours

Work will take place during standard construction hours between **7am to 6pm Monday to Friday and 8am to 1pm Saturdays**.

There will be a break from construction over the holiday period between **Thursday 24 December and Sunday 3 January 2021**.

Changes to traffic during major concrete pour days

Over the coming months, a series of major concrete pours will occur on site to provide the foundations of the multi-storey car park. In order to carry out the work safely on these days, one lane will be closed on Henderson Road adjacent to the work site (see below map) and traffic control and signage will be in place to support motorists and pedestrians with the change in traffic arrangements. The concrete pours will begin in December 2020 and are expected to be completed in May 2021.



Keeping you up to date

We will continue to keep the community informed with regular project updates. More information about the project is available on our website www.transport.nsw.gov.au/edmondsonpark. If you would like to sign up to our project distribution list, please contact us on **1800 684 490** or email projects@transport.nsw.gov.au and we will email you regular updates.

For all urgent enquiries or complaints regarding construction activities, please call our **24-hour Construction Response Line on 1800 775 465**.



This document contains important information about public transport projects in your area. If you require the services of an interpreter, please contact the Translating and Interpreting Service on **131 450** and ask them to call Transport for NSW on **(02) 9200 0200**. The interpreter will then assist you with translation.

For more information call **1800 684 490**

Email projects@transport.nsw.gov.au or visit www.transport.nsw.gov.au/edmondsonpark

For urgent enquiries or complaints regarding construction activities, please call 24 hours **1800 775 465**