



Transport Access Program

Erskineville Station Upgrade

COMMUNITY NOTIFICATION

NOVEMBER 2020

Planning is underway for an accessibility upgrade at Erskineville Station. The upgrade is part of the Transport Access Program, a NSW Government initiative to provide a better experience for public transport customers by delivering accessible, modern, secure and integrated infrastructure.

As part of the planning process, preliminary investigations help identify what upgrades will be required to make Erskineville Station fully accessible. This involves investigative boreholes, service identification and surveying at and around the station. The investigations will be undertaken during standard working hours between **7am and 6pm from Monday 16 November until Wednesday 18 November 2020.**

What you may notice

Equipment to be used during these investigations will include a small drilling rig, powered hand tools, surveying equipment, generators and a vacuum truck.

Some of this work may be noisy at times however, we will make every effort to minimise the impact to nearby residents and businesses.

Temporary closure of footpath and bike path – Bridge Street, Erskineville

From 7am to 6pm, Monday 16 November to Wednesday 18 November 2020, a section of footpath and bike path on the western side of Bridge Street between Ashmore Street and Swanson Street will be temporarily closed. A map of this area is available overleaf.

This temporary closure will enable the site investigation works to be carried out safely. Traffic control and signage will be in place to direct pedestrians and cyclists safely around the work area.

We apologise for any inconvenience and thank you for your patience during these works.

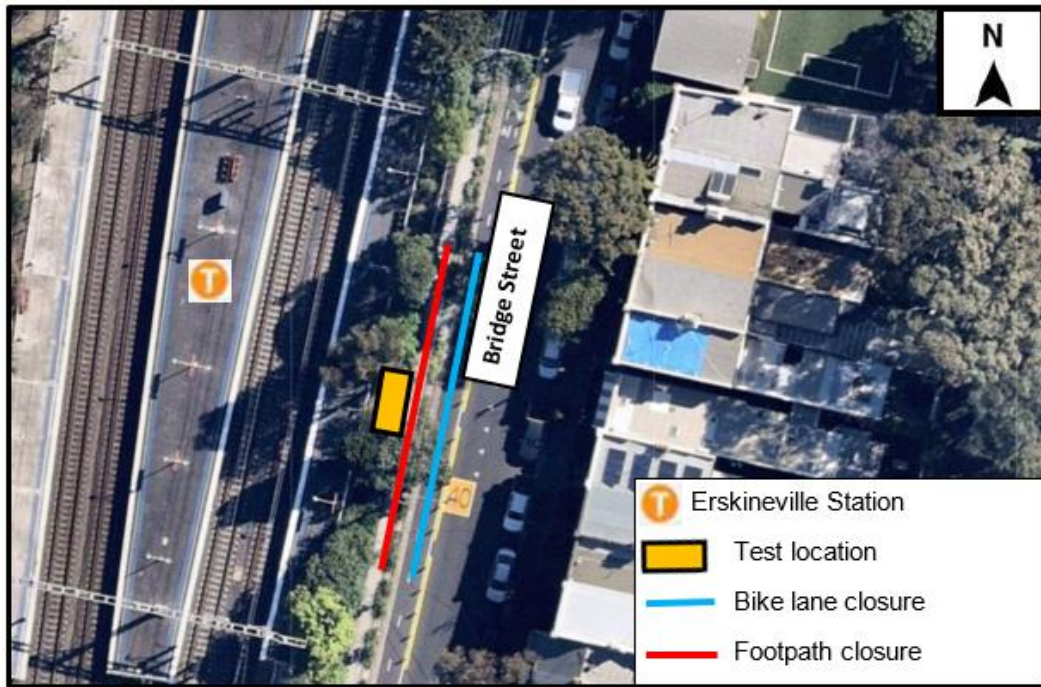
Keep in touch

We will continue to keep you informed with regular project notifications and online updates published to the project website transport.nsw.gov.au/projects/current-projects/erskineville-station-upgrade.

If you would like to be added to the project distribution list or for more information on the Erskineville Station Upgrade, please contact us on **1800 684 490** or email projects@transport.nsw.gov.au

For all urgent enquiries or complaints regarding construction activities, please call our 24-hour Construction Response Line on **1800 775 465**.

Map of work area



This document contains important information about public transport projects in your area. If you require the services of an interpreter, please contact the Translating and Interpreting Service on **131 450** and ask them to call Transport for NSW on **(02) 9200 0200**. The interpreter will then assist you with translation.

Chinese (Simplified)

这份文件包含你所在地区公共交通工程项目的重要信息。如果你需要传译服务，请致电翻译与传译服务机构，电话131 450，要求他们为你接通交通部(Transport for NSW)，电话是 (02) 9200 0200。传译员会为你做翻译。

Spanish

El presente documento contiene información importante sobre proyectos de transporte público en su área. Si requiere los servicios de un intérprete, llame al Translating and Interpreting Service al 131 450 y pídale que llamen a **Transport for NSW**, teléfono: (02) 9200 0200. Luego el intérprete le ayudará con la traducción.