

What's happening in Dee Why?

In Dee Why, the majority of road works have been completed. In January our contractor will return for four night shifts to relocate a water hydrant on the corner of Pittwater Road and Pacific Parade, Dee Why (location shown over the page).

Construction activities

Construction activities at the corner of Pittwater Road and Pacific Parade will involve:

- excavating the pram ramp at the pedestrian crossing
- exposing the water main
- relocating existing hydrant to a new location in the footpath, two metres south
- rebuilding pram ramp

Hours of work

Construction activities will take place on **Tuesday 14 January** and **Wednesday 15 January** between **7pm and 5am** and then on **Wednesday 29 January** and **Thursday 30 January** between **7pm and 5am**.

This work will happen outside of standard construction hours to ensure the safety of workers, pedestrians and motorists, and to minimise impacts to traffic. Traffic control will be in place to direct pedestrians and motorists safely around the work areas.

What you may notice

Equipment that may be used will include an excavator, jack hammer, power and hand tools, concrete trucks, sucker trucks, saw cutters and other light vehicles.

Minimising community impact

Some of the work will be noisy and we try to reduce the noise when we can. Some ways we do this include:

- using sound blankets to reduce the noise from high impact activities
- the use of squawkers rather than beepers on vehicles
- only using noisy machinery when we absolutely have to
- doing noisy work early in the evening when possible
- directing the noise and lights away from residents when we can
- talking to residents before the work starts, to let them know what to expect

Traffic, parking and pedestrian changes

There will be some temporary traffic, parking and pedestrian changes to ensure the work zone is safe including a partial lane closure in place during construction. Please keep to speed limits and follow the direction of traffic controllers and signs.

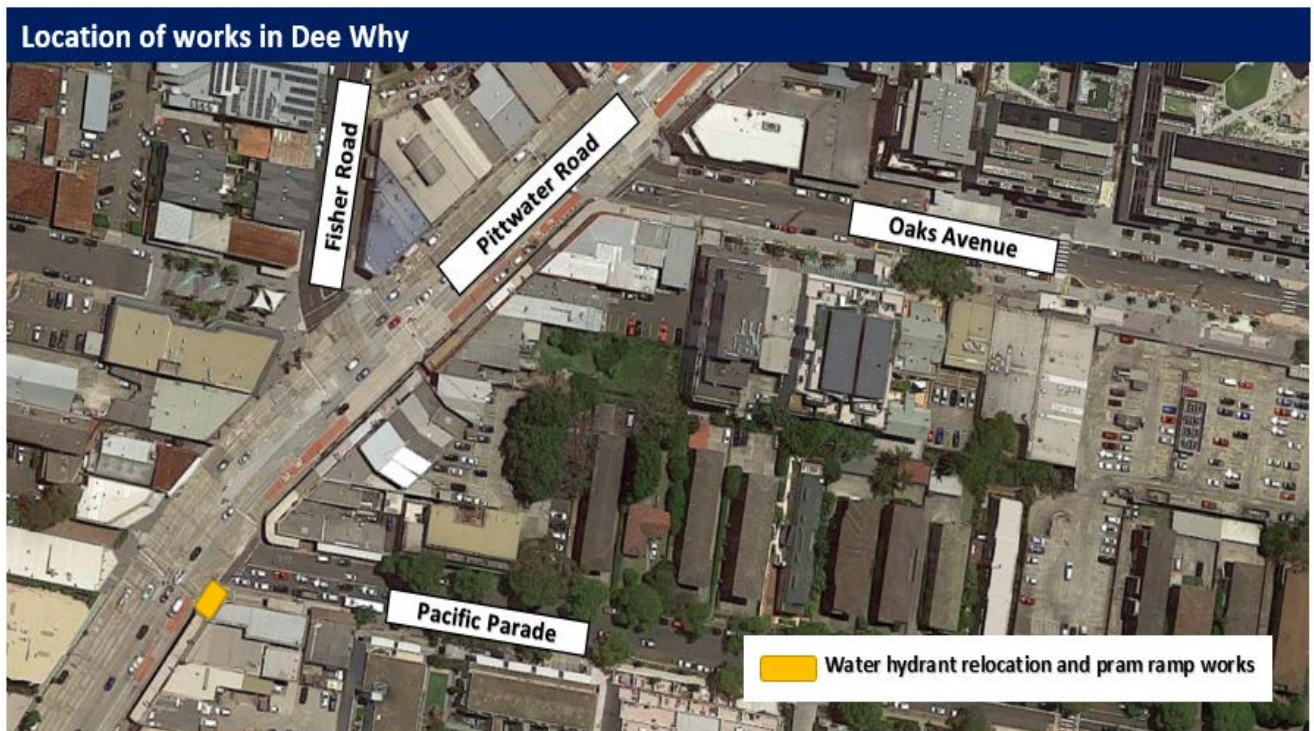
Contact information

For more information on the work or the Northern Beaches B-Line Program please contact us on:

- phone 1800 048 751 (24 hours)
- email projects@transport.nsw.gov.au
- visit b-line.transport.nsw.gov.au

For the latest traffic updates phone 132 701, or download Live Traffic NSW App.

Map of work area



This document contains important information about public transport projects in your area. If you require the services of an interpreter, please contact the Translating and Interpreting Service on 131 450 and ask them to call Transport for NSW on (02) 9200 0200 the interpreter will then assist you with translation.