



Commuter Car Park Program

Leppington

Project update

August 2020



Artist's impression of Leppington Commuter Car Park, subject to detailed design

Transport for NSW is delivering more commuter car parking at Leppington Station to provide you with more convenient access to public transport and reduce congestion on our roads. Key benefits of the project include:

- a multi-storey car park with up to 1,000 additional parking spaces
- free parking for up to 18 hours with Transport Park&Ride
- additional accessible parking spaces
- lift access
- road pavement and pedestrian pathway upgrades
- CCTV, lighting and wayfinding for improved safety and security
- motorbike parking
- provision for electric vehicle charging spaces is also being assessed.

The new multi-storey car park will be completed and opened to the community in mid-2021.

For more information call **1800 684 490**

Email projects@transport.nsw.gov.au or visit www.transport.nsw.gov.au/leppington

For urgent enquiries or complaints regarding construction activities, please call 24 hours **1800 775 465**

Progress update

In July, geotechnical investigations were carried out on the site of the new multi-storey car park to the west of the existing northern car park. You may have noticed our new temporary site boundary fencing and shade cloth have been installed and we have established some of our temporary site accommodation.

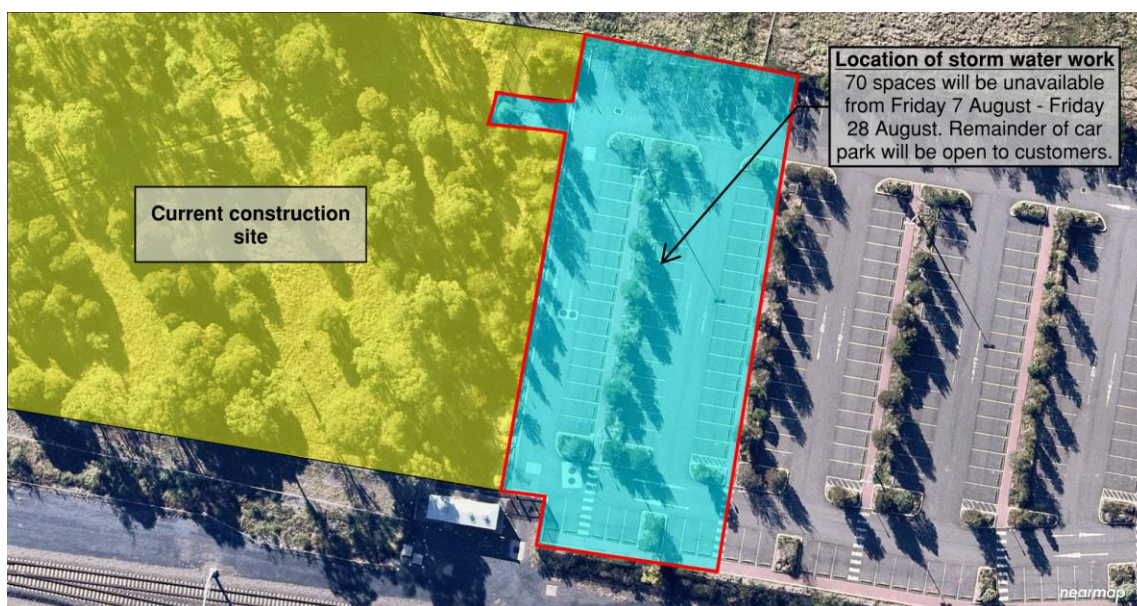
Upcoming construction work

During August, the following work will occur for the new multi-storey car park:

- The site will be cleared of trees and weeds and excavation work will begin.
- Piling will begin in late August/early September.
- Work will take place at the western end of the existing northern at-grade car park to relocate the storm water service line. In order to complete this work safely, approximately 70 car parking spaces will be unavailable from **Friday 7 August – Friday 28 August**. Signage and barricades will be in place to assist customers with changed parking arrangements.

Deliveries will be scheduled outside peak times to avoid disruption to commuters. All work will take place during standard construction hours between **7am-6pm Monday to Friday and 8am-1pm on Saturdays**.

Map of work during August



Changes to parking coming in September

As construction of the new multi-storey car park progresses, approximately 225 spaces in the existing northern commuter will be temporarily unavailable from early September in order to complete the work safely.

On behalf of Transport for NSW, Camden Council are building a temporary car park to the north-east of the station to offset these unavailable spaces. The temporary car park is expected to be completed and opened to the community in late September.

Signage and fencing will be in place to assist customers with changed parking arrangements ahead of time. The existing southern commuter car park will remain open.

For more information call **1800 684 490**

Email projects@transport.nsw.gov.au or visit www.transport.nsw.gov.au/leppington

For urgent enquiries or complaints regarding construction activities, please call 24 hours **1800 775 465**

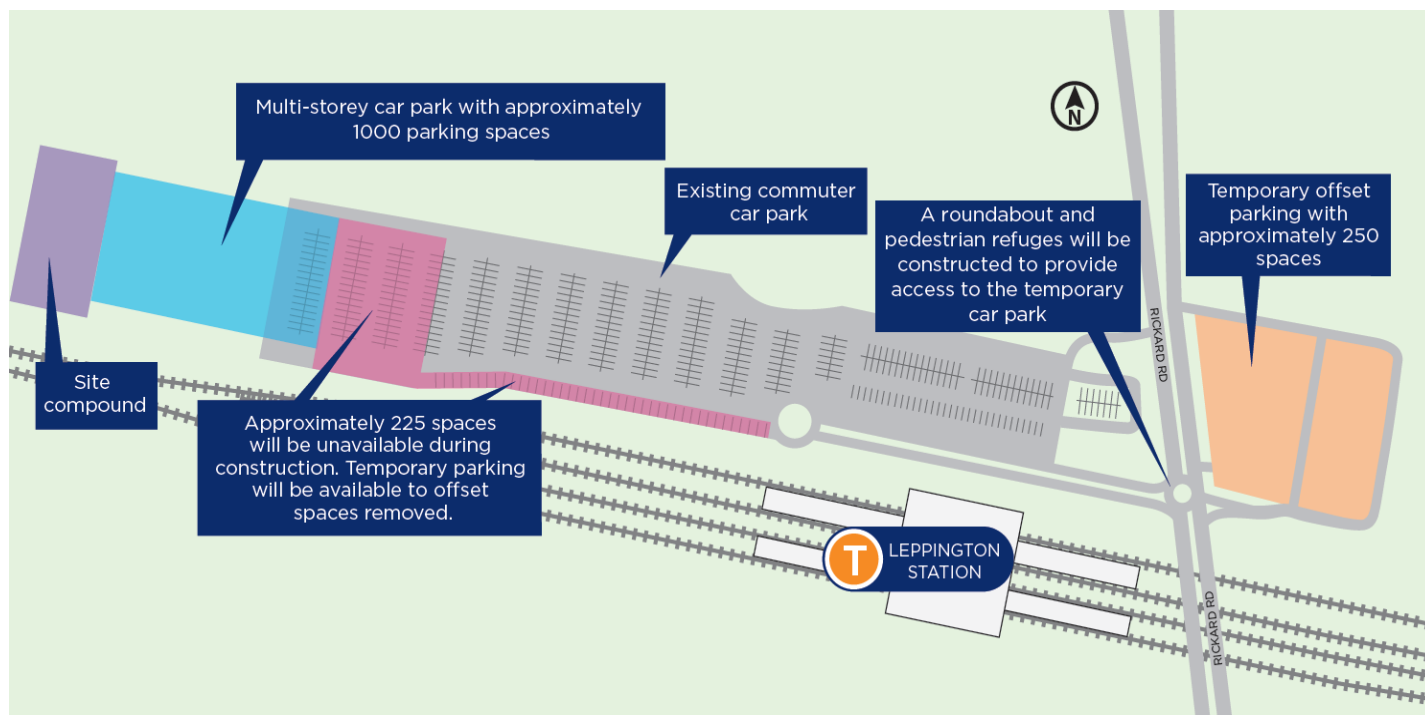
Temporary car park update

In July, Council commenced road work for the temporary car park (pictured right) on Rickard Road including preparation for the roundabout access to the station and car park.

Camden Council will continue construction work on the roundabout on Rickard Road and 250-space temporary car park throughout August and September, and will include footpath improvements to enhance pedestrian connection to the station.



Site map



Map of changed parking arrangements coming in to effect at Leppington Station in September.

Keeping you up to date

We will continue to keep the community informed with regular project updates. More information is available on our website www.transport.nsw.gov.au/leppington. If you would like to sign up to our project distribution list, please contact us on **1800 684 490** or email projects@transport.nsw.gov.au and we will email you regular updates.

For all urgent enquiries or complaints regarding construction activities, please call our **24-hour Construction Response Line** on **1800 775 465**.



This document contains important information about public transport projects in your area. If you require the services of an interpreter, please contact the Translating and Interpreting Service on **131 450** and ask them to call Transport for NSW on **(02) 9200 0200**. The interpreter will then assist you with translation.

For more information call **1800 684 490**

Email projects@transport.nsw.gov.au or visit www.transport.nsw.gov.au/leppington

For urgent enquiries or complaints regarding construction activities, please call 24 hours **1800 775 465**