

New Intercity Fleet Maintenance Facility

COMMUNITY NOTIFICATION

The NSW Government is delivering a New Intercity Fleet to replace trains carrying customers between Sydney and the Central Coast, Newcastle, the Blue Mountains and the South Coast.

Major construction of the maintenance facility is nearing completion.

Work in July

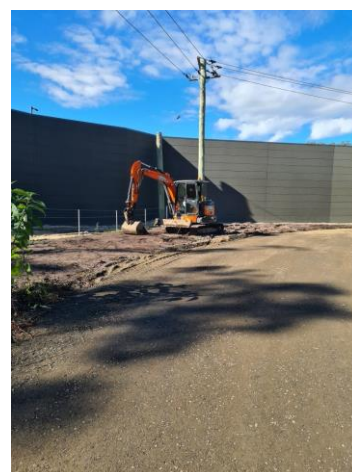
- Asphaltting of the internal staff carpark adjacent to the maintenance facility building
- Completion of road re-construction at the corner of Ourimbah and Turpentine roads, including re-surfacing and safety barrier installation
- Drainage work at Turpentine Road underpass including road re-surfacing (requires temporary road closure)
- Installation of security entry gate and acoustic gate
- Removal of some equipment, including some temporary site offices
- Rural and chainmesh boundary fence installation, including foundations, posts and panels
- Road seal work on the new access road (now Buckton Road)
- Landscaping along Ourimbah and Turpentine roads
- Line marking and signage installation at the roundabout on Enterprise Drive
- Completion of kerb, gutter and footpath work

Extended temporary road closure

The temporary road closure at the intersection of Ourimbah and Turpentine roads has been extended to **Friday 10 July**. Access to Enterprise Drive will be maintained via Turpentine Road or via the new access bridge off Orchard Road.

Following the completion of the intersection work, a temporary road closure to complete drainage work at the Turpentine Road rail bridge underpass will be in place for around one week from **7am Saturday 11 July**.

This closure may be brought forward if the intersection work is completed ahead of schedule. Nearby residents will be notified in advance of any change.



Road realignment and resurfacing, and safety barrier upgrades at the intersection of Ourimbah and Turpentine roads, will continue until 10 July. Drainage work under the Turpentine Road rail bridge will start when the intersection is complete.

Revised standard construction hours

Most work will continue to be carried out during the new standard construction hours (**7am to 6pm Monday to Sunday, including public holidays**). For the safety of staff, rail customers and the community, some work will take place outside these hours. Noise intensive activities are still subject to restrictions specified in the project approval. Nearby residents and businesses will continue to be notified before work outside the new standard construction hours takes place.

Environmental activities

- Continued implementation of environmental controls in line with the schedule of work (e.g. erosion and sediment controls and dust suppression measures)
- Monitoring noise, vibration, dust, surface water and groundwater
- Dust mitigation activities, including the use of water carts which may be used outside standard construction hours
- Operating street sweepers as required
- Dewatering activities.

Enterprise Drive / Old Chittaway Road

Landscaping work at the new roundabout on Enterprise Drive will continue in July.

Enterprise Drive continues to have a reduced 40km/h roadwork speed limit either side of the new roundabout. Road users are asked to please keep to the speed limit and follow the direction of any traffic controllers and signs.

Equipment

Equipment to be used includes:

- Hand tools including chainsaws
- Light vehicles and trucks
- Graders, front end loaders and excavators
- Earthmoving equipment
- Elevated work platforms
- Vacuum trucks and street sweepers
- Generators and lighting towers
- Track machinery including tampers
- Compaction equipment including rollers
- Concrete trucks and pumps
- Road profilers and asphalt paving plant
- Road sealing trucks

Out of hours work

We will be working from **midnight Friday 24 July to 12 noon Monday 27 July 2020** to carry out the following activities

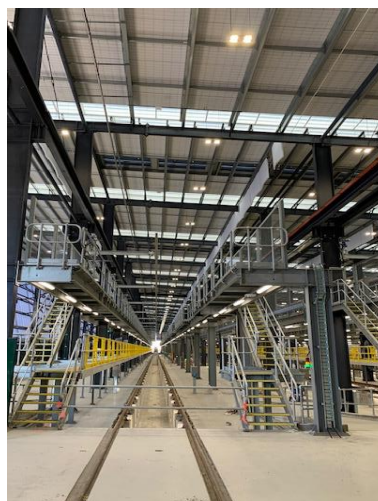
- Track work
- Overhead wiring testing
- Minor civil work
- Signalling commissioning work

For the safety of staff, rail customers and the community, most of this essential work will be completed outside standard construction hours as part of a Sydney Trains corridor possession.

Noise and vibration

Activities that generate high levels of noise and vibration may occur during July.

John Holland will reduce noise impacts by conducting noisier activities during standard construction hours where possible and turning machinery off when not in use.



Interior of the new maintenance facility building