

Transport Access Program

Niagara Park Station Upgrade

Project Update

July/August 2020



Artist's impression of the Niagara Park Station Upgrade, subject to detailed design.

The NSW Government is improving accessibility at Niagara Park Station

Planning approval has been granted for the upgrade of Niagara Park Station.

The approval follows public display of the Review of Environmental Factors from 20 May to 3 June 2020 and preparation of a Determination Report.

The Determination Report and planning approval conditions are available at:

www.transport.nsw.gov.au/niagarapark

Transport for NSW received 25 submissions in response to the project's Review of Environmental Factors.

We would like to thank the community for their feedback during the planning process.

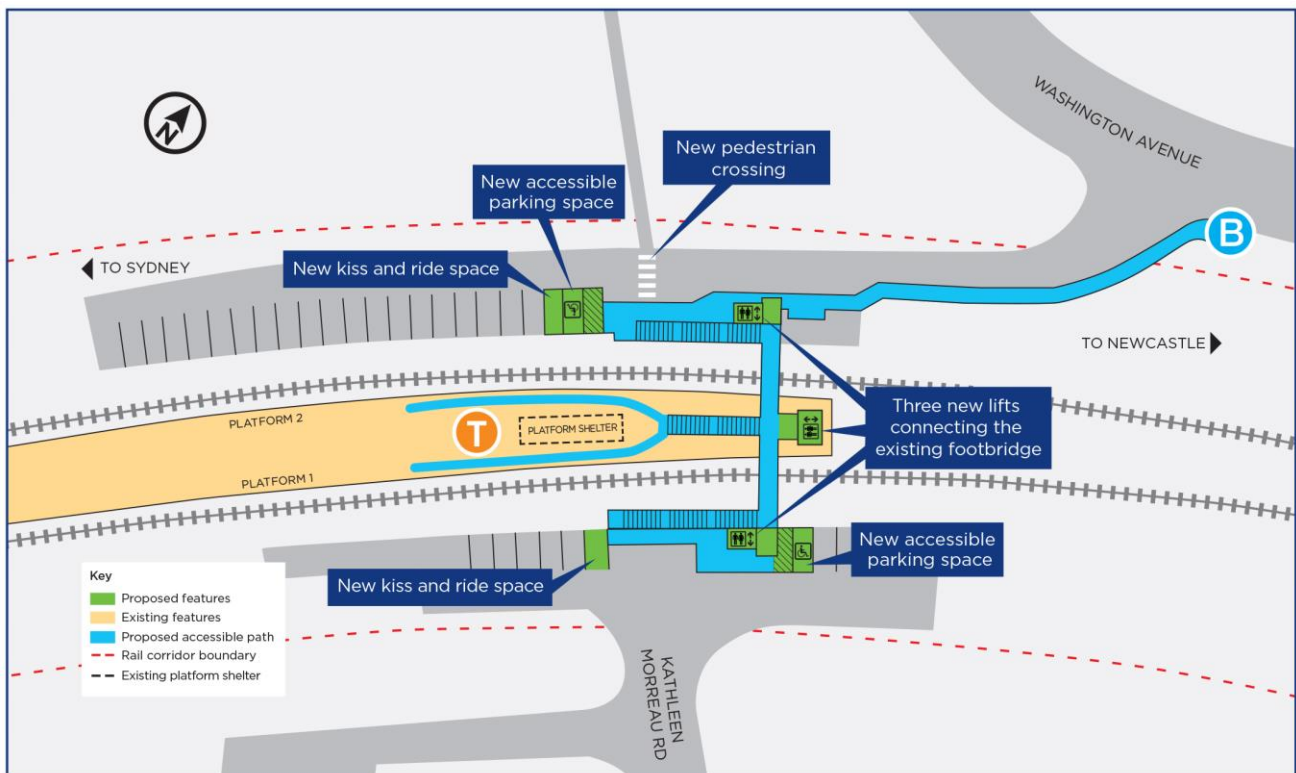
Key features of the upgrade include:

- three new lifts connecting the platform and commuter car parks to the existing footbridge
- a new pedestrian crossing across the Washington Avenue commuter car park connecting to the existing path to Niagara Park Shopping Centre
- five new bicycle hoops
- a new accessible parking space and kiss and ride space in both commuter car parks
- a new accessible path from the station to the bus stop on Railway Crescent
- minor platform regrading
- safety and security upgrades, including lighting, CCTV and wayfinding.

Design development

A change to the design of the upgrade has been made since the initial plans for the Niagara Park Station Upgrade were placed on public display.

The proposed freestanding canopy has been removed from scope with Boarding Assistance Zones to be located in close proximity to the existing canopy. Lift landings will have new canopies for weather protection at the lift entrances.



Key features of the Niagara Park Station upgrade, subject to detailed design

For more information call **1800 684 490**.

Email projects@transport.nsw.gov.au or visit www.transport.nsw.gov.au/niagarapark

For urgent enquiries or complaints regarding construction activities, please call 24 hours **1800 775 465**

Weekend work – Saturday 25 and Sunday 26 July 2020

Work will be carried out from **6am to 6pm** on **Saturday 25 and Sunday 26 July 2020** (weather permitting) during a scheduled track work weekend when **train services don't operate** and the **station is closed**. As the station is closed, construction vehicles will temporarily occupy a portion of the Kathleen Morreau Road commuter car park.

For information about rail replacement buses during the scheduled track work, please visit **transportnsw.info** or phone **131 500**.

Activities to be carried out on 25 and 26 July include:

- using a small drilling rig to undertake geotechnical investigations of the ground conditions (mainly within the rail corridor)
- surveying the existing platform, station buildings and surrounding areas
- identifying underground utilities.

Equipment to be used includes mini piling rigs, vacuum excavation trucks, delivery trucks, power and hand tools.

The construction equipment will be positioned as far away from residential areas as possible with regular respite periods during noisy work. We apologise for any inconvenience caused by this important work.

Upcoming site establishment

From Monday 3 August 2020, site establishment activities will start. This work will continue throughout August.

Activities will include:

- geotechnical investigation into the ground conditions (mainly in the rail corridor)
- surveys of the platform, station buildings and surrounding areas
- install site sheds (within the rail corridor near to Kathleen Morreau Road commuter car park)
- continue installing fencing and hoarding (at the location of the three lift work areas - on the platform and both ends of the footbridge)
- locating electrical services.

Equipment to be used includes: small drilling rig, vacuum excavation truck, surveying equipment, delivery trucks, power and hand tools.

Construction hours

Standard construction hours are **7am to 6pm Monday to Friday** and **8am to 1pm on Saturdays**.

For the safety of staff, rail customers and the community, some work will be completed outside standard construction hours. Nearby residents and businesses will be notified before out of hours work takes place.

Temporary traffic, access and parking changes

During the upgrade work, temporary traffic and access changes for both pedestrians and motorists may occur around Niagara Park Station including at the commuter car parks.

Changes may include footpath closures, single lane closures and/or temporary parking removal at the either commuter car park (to accommodate large vehicles undertaking construction work including the removal of rock/spoil from the site).

Traffic control and signage will be in place to help pedestrians and motorists with all temporary changes.

For more information call **1800 684 490**.

Email projects@transport.nsw.gov.au or visit www.transport.nsw.gov.au/niagarapark

For urgent enquiries or complaints regarding construction activities, please call 24 hours **1800 775 465**

Transport Access Program

This project is part of the Transport Access Program, a NSW Government initiative to provide a better experience for public transport customers by delivering accessible, modern, secure and integrated transport infrastructure.

The Niagara Park Station Upgrade will provide a station that is accessible to those with a disability, limited mobility, and parents/carers with prams and customers with luggage.

Keeping the community informed

The community will be kept informed about the project, including upcoming work via notifications that will be distributed to nearby residents. Information on the project is also available on the project web page:

transport.nsw.gov.au/niagarapark

For further information on the project, please call the Project Infoline on **1800 684 490** or email projects@transport.nsw.gov.au.

For all urgent enquiries or complaints regarding construction activities, please call our 24-hour Construction Response Line on **1800 775 465**.

Arabic

تتضمن هذه الوثيقة معلومات عن مشاريع النقل العام في منطقتكم. إذا كنتم بحاجة إلى خدمات مترجم، الرجاء الإتصال بخدمة الترجمة الشفهية والخطية على رقم 131 450 واطلبوا منهم ان يتصلوا بمصلحة المواصلات في نيو ساوث ويلز على رقم 9200 0200 (02). عندها يساعدكم المترجم بالترجمة.

Filipino

Ang dokumentong ito ay naglalaman ng mahalagang impormasyon tungkol sa mga proyektong transportasyon na pampubliko sa inyong lugar. Kung kailangan ninyo ng serbisyo ng tagapagpaliwanag, makipag-ugnayan po sa Serbisyo ng Pagsasalin at Pagpapaliwanag sa 131 450 at hilingan silang tawagan ang Transportasyon para sa NSW sa (02) 9200 0200. Tutulungan kayo ng tagapagpaliwanag sa pagsasalin.

Hindi

इस दस्तावेज में आपके इलाके के सावजनिक-परवहन परियोजनाओं के बारे में महत्वपूर्ण जानकारी सम्मिलित है। यदि आपको दुर्भाषण की सेवा की आवश्यकता है तो कृपया 131 450 पर टैलेफोन टुंग एड इटपर्स टुंग से संपर्क कर और उनसे (02) 9200 0200 पर टैपोटर्स प्राजेक्ट्स को फोन करने के लिए कहें। उसके बाद दुर्भाषण आपको अनुवाद करने में सहायता देगा।

Tagalog

Ang dokumentong ito ay naglalaman ng mga mahahalagang impormasyon tungkol sa mga proyekto sa pampublikong transportasyon ng inyong lugar. Kung kayo ay nangangailangan ng serbisyo ng isang interpreter, tawagan po lamang ang Translating and Interpreting Service sa 131 450 at pakiusapan silang tumawag sa "Transport for NSW" sa (02) 9200 0200. Ang interpreter ay tutulungan kayo sa pagsasalin-wika.



This document contains important information about public transport projects in your area. If you require the services of an interpreter, please contact the Translating and Interpreting Service on **131 450** and ask them to call Transport for NSW on **(02) 9200 0200**. The interpreter will then assist you with translation.

For more information call **1800 684 490**.

Email projects@transport.nsw.gov.au or visit www.transport.nsw.gov.au/niagarapark

For urgent enquiries or complaints regarding construction activities, please call 24 hours **1800 775 465**