

Transport Access Program

Niagara Park Station Upgrade

Project Update

October 2020

Artist's impression of Niagara Park Station Upgrade, subject to detailed design.



Upcoming work

Construction on Niagara Park Station Upgrade is progressing well with site establishment and investigation activities underway during September. Activities will continue in October and include:

- installation of foundation piles for the new lifts
- excavation and construction of lift pits
- construction of under track connections for power, telecommunications and stormwater services
- surveying the station precinct.

Equipment to be used includes excavators, dump trucks, vacuum trucks, surveying equipment, delivery trucks, concrete trucks, piling rig, power and hand held tools.

Weekend work – 3-5 October 2020

For the safety of customers and workers, work will take place during a scheduled Sydney Trains trackwork weekend. Work will be carried out continuously from **6am Saturday 3 October** to **11pm Monday 5 October 2020**.

During this time the station will be closed as train services do not operate. Access to the footbridge from both commuter car parks will remain open. Traffic control will be in place to assist pedestrians and temporary fencing will be used to divert pedestrians through the construction zones safely.

The work will involve operation of a large mobile crane and piling rig within both commuter car parks (at the new lift locations) and on the platforms to relocate electrical services, undertake piling work and continue site establishment activities.

See the map overleaf for more information.

Other equipment to be used includes delivery trucks, elevated work platforms, excavators, dump trucks, concrete trucks, mobile lighting towers, power and hand tools.

The construction equipment will be positioned as far away from residential areas as possible with regular respite periods during noisy work. All piling activities will take place during daytime hours to reduce noise and vibration impacts. An acoustic consultant will be on site to monitor noise and vibration impacts so that it is maintained within approved limits.

For up to date information about replacement bus services during these times please visit transportnsw.info or call **131 500**. Rail replacement buses will be operating from Washington Avenue (east of the car park access road).

Temporary changes to Washington Avenue commuter car park

From **5am Saturday 3 October** until **11pm Monday 5 October 2020**, the Washington Avenue commuter car park will be **closed** to ensure the safety of customers and workers while construction vehicles and construction activities are underway.

Parking is available on Washington Avenue or Kathleen Morreau Road commuter car park.

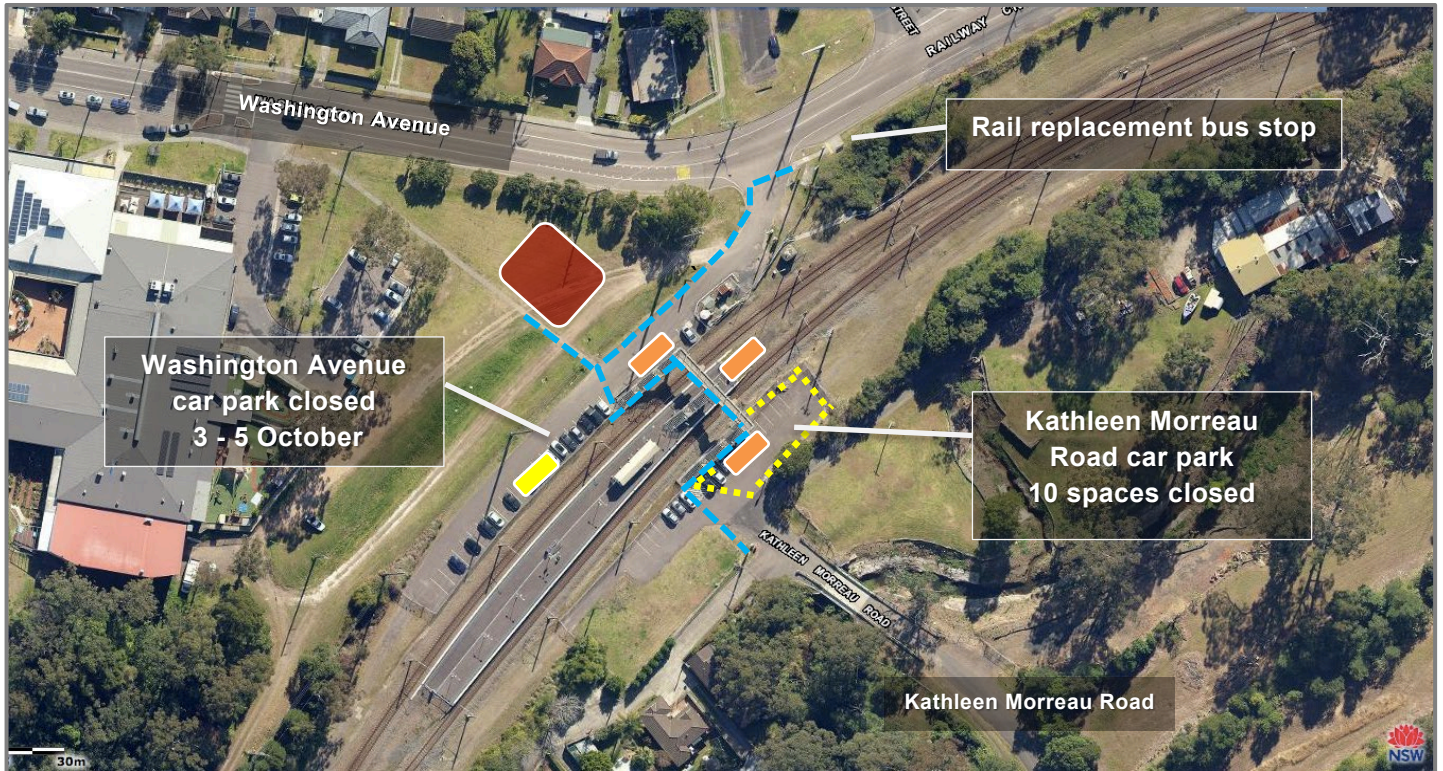
Traffic control and signs will be in place to help with the temporary changes.

Temporary changes to Kathleen Morreau Road commuter car park






Approximately 10 car spaces will be temporarily closed until August 2021 to allow for station upgrade work within the Kathleen Morreau Road commuter car park (near the new lift). The remaining spaces will continue to be available for customers.

See the map overleaf for more information.

Temporary access changes during October long weekend work



Niagara Park Station Upgrade map legend:

-  Temporary work zones for three lifts under construction
-  Construction site compound area
-  Temporary closure of a portion of Kathleen Moreau Road commuter car park until late 2021.
-  Crane operating area during October weekend work
-  Pedestrian access to/from footbridge via car parks during October long weekend work.

Construction hours

Standard construction hours are **7am to 6pm Monday to Friday** and **8am to 1pm on Saturdays**. For the safety of staff, customers and the community, some work will be completed outside standard construction hours.

We will notify nearby residents and businesses in advance if we need to work outside these times.

For more information call **1800 684 490**.

Email projects@transport.nsw.gov.au or visit transport.nsw.gov.au/niagarapark

For urgent enquiries or complaints regarding construction activities, please call 24 hours **1800 775 465**

Keeping the community informed

The community will be kept informed about the project, including upcoming work via notifications that will be distributed to nearby residents. Information on the project is also available on the project web page transport.nsw.gov.au/niagarapark

For further information on the project, please call the Project Infoline on **1800 684 490** or email projects@transport.nsw.gov.au

Arabic:

تتضمن هذه الوثيقة معلومات عن مشاريع النقل العام في منطقتكم. إذا كنتم بحاجة إلى خدمات مترجم، الرجاء الإتصال بخدمة الترجمة الشفهية والخطية على رقم 131 450 واطلبوا منهم ان يتصلوا بمصلحة المواصلات في نيو ساوث ويلز على رقم 9200 0200 (02). عندها يساعدكم المترجم بالترجمة.

Hindi:

इस दतावेज में आपके इलाके के सार्वजनिक-परिवहन परियोजनाओं के बारे में महत्वपूर्ण जानकारी सम्मिलित है। यदि आपको दुभार्षण की सेवा की आवश्यकता है तो कृपया 131 450 पर ट्रेलैर टंग एंड इटर्प् टंग सर्विसेस संपर्क कर और उनसे (02) 9200 0200 पर ट्रेपोटर् फ़ाजिक् स को फ़ोन करने के लिए कहें। उसके बाद दुभार्षण या आपको अनुवाद करने में सहायता देगा।

Filipino:

Ang dokumentong ito ay naglalaman ng mahalagang impormasyon tungkol sa mga proyektong transportasyon na pampubliko sa inyong lugar. Kung kailangan ninyo ng serbisyo ng tagapagpaliwanag, makipag-ugnayan po sa Serbisyo ng Pagsasalin at Pagpapaliwanag sa 131 450 at hilingan silang tawagan ang Transportasyon para sa NSW sa (02) 9200 0200. Tutulungan kayo ng tagapagpaliwanag sa pagsasalin.

Tagalog:

Ang dokumentong ito ay naglalaman ng mga mahalagang impormasyon tungkol sa mga proyekto sa pampublikong transportasyon ng inyong lugar. Kung kayo ay nangangailangan ng serbisyo ng isang interpreter, tawagan po lamang ang Translating and Interpreting Service sa 131 450 at pakiusapan silang tumawag sa "Transport for NSW" sa (02) 9200 0200. Ang interpreter ay tutulungan kayo sa pagsasalin-wika.



This document contains important information about public transport projects in your area. If you require the services of an interpreter, please contact the Translating and Interpreting Service on **131 450** and ask them to call Transport for NSW on **(02) 9200 0200**. The interpreter will then assist you with translation.

For more information call **1800 684 490**.

Email projects@transport.nsw.gov.au or visit transport.nsw.gov.au/niagarapark

For urgent enquiries or complaints regarding construction activities, please call 24 hours **1800 775 465**