

Commuter Car Park Program

North Rocks



Artist's Impression of the proposed North Rocks commuter car park, subject to planning approval and detailed design

More commuter car parking is coming to North Rocks Station

Planning is underway to deliver additional commuter car parking spaces at North Rocks to provide you with more convenient access to public transport and reduce congestion on our roads.

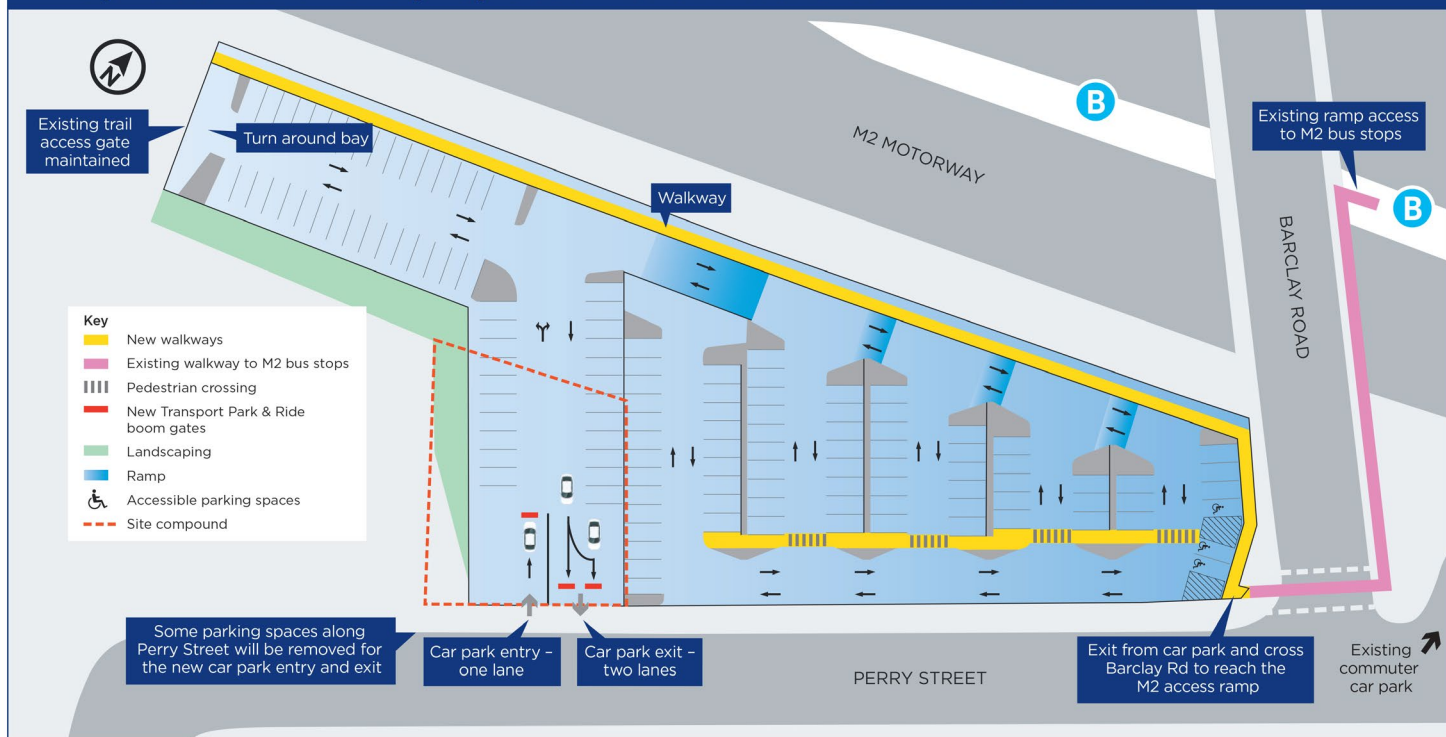
Key features of the proposal include:

- a new commuter car park with approximately 135 parking spaces located on the corner of Barclay Road and Perry Street to improve access to the nearby M2 bus stop
- accessible parking spaces
- dedicated pathways connecting to the existing footpath on the corner of Barclay Road and Perry Street

- provision for future Transport Park&Ride infrastructure (Opal operated boom gates)
- lighting and wayfinding signage for improved safety
- provision for future electric vehicle charging spaces
- landscaping within the car park and fencing.

Subject to planning approval, construction is planned to begin in mid-2021 and is expected to be completed in mid-2022.

Key features of the proposed North Rocks Commuter Car Park



Site map of the new commuter car park, subject to planning approval and detailed design

Have your say on the concept design

You can view and provide feedback on the concept design by completing the online feedback form on our website at www.transport.nsw.gov.au/northrocks, calling **1800 684 490** or emailing projects@transport.nsw.gov.au by **5pm Friday 18 December 2020**. Your input will help to inform the planning approval process and will be considered during the detailed design phase of the project.

Keeping you up to date

We will continue to keep you informed about the project through notifications to customers, local residents and businesses and frequent updates published on our website.

If you have any questions or would like to sign up to receive regular project updates via email, please contact us on **1800 684 490** or email projects@transport.nsw.gov.au.

About the Commuter Car Park Program

The Commuter Car Park Program is a NSW Government initiative to provide you with more convenient access to public transport interchanges and help ease congestion on our roads. We have already delivered more than 10,000 commuter car spaces across Sydney since 2011, with another 8,000 on the way.



This document contains important information about public transport projects in your area. If you require the services of an interpreter, please contact the Translating and Interpreting Service on **131 450** and ask them to call Transport for NSW on **(02) 9200 0200**. The interpreter will then assist you with translation.

For more information call **1800 684 490**

Email projects@transport.nsw.gov.au or visit transport.nsw.gov.au/northrocks

