



# Cross Street, Brookvale

## Construction Update

25 May 2020

The new dedicated left-hand turn into Cross Street from Pittwater Road opened to traffic on 6 May 2020. The new lane improves the flow of northbound traffic along Pittwater Road.

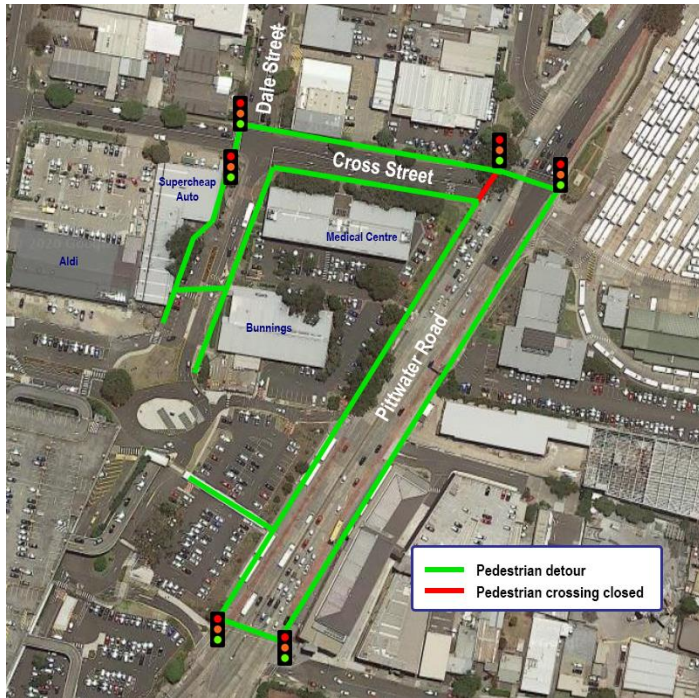
Some final work will continue to complete the remaining footpaths, minor repairs and landscaping. The pedestrian crossing at Cross Street will remain temporarily closed to allow for the completion of the footpath and ramp. We apologise for any inconvenience. Please follow our pedestrian detour signs for alternate route options.

### Hours of work

Work will occur between **7am to 6pm Monday to Friday, 8am to 1pm Saturdays** and up to **two nights a week, between 6pm and 5am** as outlined in the calendar to the right.

Night work is required outside of standard hours to improve safety for workers, pedestrians and motorists and to minimise impacts to traffic. If a night shift is cancelled due to rain, we will aim to move it to another night that same week.

Night work in June 2020						
Sun	Mon	Tue	Wed	Thurs	Fri	Sat
	1	2	3	4	5	6
7	8	9	10	11	12	13
14	15	16	17	18	19	20
21	22	23	24	25	26	27
28	29	30				



## Minimising impacts to the community

Some of this work may be noisy and we will do everything we can to minimise disruption, including turning off vehicles when not in use, completing noisy work early in the evening where possible and directing noise and lights away from residents.



This document contains important information about public transport projects in your area. If you require the services of an interpreter, please contact the Translating and Interpreting Service on 131 450 and ask them to call Transport for NSW on (02) 9200 0200. The interpreter will then assist you with translation.

[www.transport.nsw.gov.au/b-line](http://www.transport.nsw.gov.au/b-line)

For more information contact the Project Information Line on 1800 684 490 or email [projects@transport.nsw.gov.au](mailto:projects@transport.nsw.gov.au)

