



Transport Access Program

Petersham Station Upgrade

Community notification

September 2020

Work continues on Petersham Station Upgrade

Construction for the Petersham Station Upgrade is progressing well. In August work was undertaken to relocate some of the station services. These and other activities will continue in September and include:

- service relocation and investigations on the station island platform and around the station precinct
- demolition of a section of the rail corridor wall and footings on Terminus Street in preparation for the new lift lobby
- further site establishment, including delivery of materials, and excavation activities on Terminus Street (within the existing construction work area).

Upcoming weekend and night work

To ensure the safety of customers and workers, some work will need to be undertaken during pre-determined Sydney Trains scheduled trackwork periods when some train services do not operate.

From **6am Saturday 26 September to 2am Monday 28 September**, work will be undertaken on the railway tracks and on Terminus Street to prepare for a new lift lobby. This will include the installation of a temporary rail corridor wall, including steel posts and excavation, and the installation of foundations for the lift well.

The station and pedestrian footbridge will remain open during this time. For up to date information about train services during these times please visit [transportnsw.info](https://transport.nsw.info) or call **131 500**.

Temporary parking and access changes on Terminus Street

From **4am Friday 25 September to 1am Monday 28 September 2020**, up to **10 additional parking spaces** on Terminus Street **will be closed** to allow work vehicles to move through the area and assist intermittent delivery of material to the Terminus Street work area ahead of the weekend work. **Please refer to map overleaf for more information.**

Between 6am Saturday 26 September and 2am Monday 28 September 2020, a single lane closure on Terminus Street (at Railway Street) will also be in place to enable the safe operation of a crane for the weekend work being undertaken.

Traffic control and signage will be in place to help pedestrians and motorists with these temporary changes.

What you may notice

This work will involve use of a large mobile crane, truck-mounted crane, excavator, vacuum truck, concrete trucks/pumps, mobile light tower, concrete saws, and power and hand tools.

Other equipment to be used in construction activities throughout September include excavators, delivery trucks, concrete saws and hand tools.

Where possible, measures will be implemented to reduce noise, including turning off vehicles when not in use, using solar powered lighting towers, monitoring noise and using non-tonal reversing beepers on our vehicles.

Construction hours

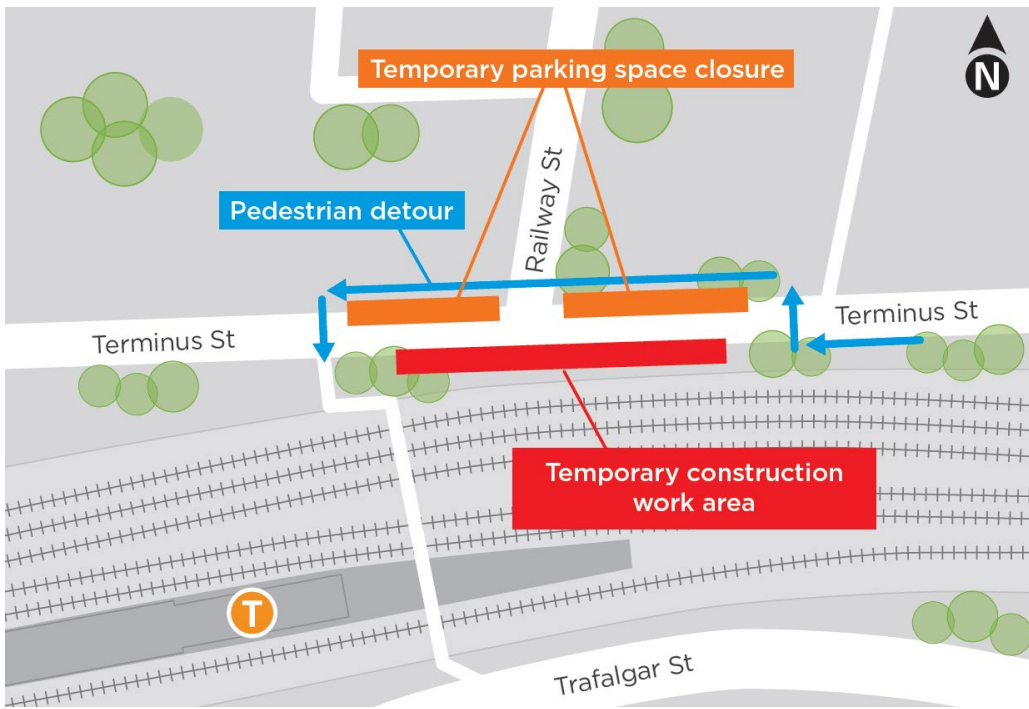
To support the construction industry and continue the delivery of important infrastructure, the NSW Government has introduced new rules allowing construction sites to operate on weekends and public holidays.

Standard construction hours are from 7am to 6pm every day, including public holidays. These changes have been made to facilitate physical distancing on construction sites and support the health and wellbeing of workers.

We understand extending construction hours to include weekends and public holidays may cause disruption, but all efforts will be made to minimise impacts where possible and ensure strict environmental conditions relating to noise, vibration and dust management are adhered to.

Keep in touch

If you would like to be added to the project distribution email list, or for more information on the Petersham Station Upgrade, please contact us on **1800 684 490** or email projects@transport.nsw.gov.au.



*Left: Map showing the locations of the temporary parking space closures from **4am Friday 25 September to 1am Monday 28 September.***

Chinese

这份文件包含你所在地区公共交通工程项目的重要信息。如果你需要传译服务，请致电翻译与传译服务机构，电话 131 450，要求他们为你接通交通部(Transport for NSW)，电话是 (02) 9200 0200。传译员会为你做翻译。

Italian

Il presente documento contiene importanti informazioni sulle iniziative nel campo del trasporto pubblico nella vostra zona. Se desiderate i servizi di un interprete, contattate il Servizio traduzioni e interpreti al numero 131 450 indicando di voler parlare con Transport for NSW al numero (02) 9200 0200. L'interprete vi aiuterà a condurre la conversazione telefonica.

Greek

Το παρόν έγγραφο περιέχει σημαντικές πληροφορίες σχετικά με δημόσια έργα μεταφορών στην περιοχή σας. Αν χρειάζεστε τις υπηρεσίες διερμηνέα, παρακαλούμε επικοινωνήστε με την Υπηρεσία Μεταφράσεων και Διερμηνείας στο 131 450 και ζητήστε τους τηλεφωνήσουν στις Συγκοινωνίες στη ΝΝΟ στο (02) 9200 0200. Ο διερμηνέας θα σας βοηθήσει στη συνέχεια με τη μετάφραση.

Vietnamese

Tài liệu này có các thông tin quan trọng về các dự án giao thông công cộng trong khu vực của quý vị. Nếu quý vị cần sự giúp đỡ của thông dịch viên, xin vui lòng liên hệ với Dịch vụ Thông Phiên Dịch ở số điện thoại 131 450 và yêu cầu họ gọi cho Cơ quan Giao thông Tiểu bang NSW ở số điện thoại (02) 9200 0200. Sau đó thông dịch viên sẽ giúp thông dịch cho quý vị.



This document contains important information about public transport projects in your area. If you require the services of an interpreter, please contact the Translating and Interpreting Service on **131 450** and ask them to call Transport for NSW on **(02) 9200 0200**. The interpreter will then assist you with translation.