



# Transport Access Program

## Petersham Station Upgrade

**Community notification**

**June - July 2020**

### **Project update – work to begin on the Petersham Station Upgrade**

The Petersham Station Upgrade will improve accessibility at Petersham Station by providing two new lifts connecting the Terminus Street entrance to the footbridge and station platform. The upgrade will also provide a new access ramp and stairs to the footbridge from Trafalgar Street, as well as an accessible parking space, bicycle parking and a formalised Kiss and Ride zone.

Work for the Petersham Station Upgrade will begin soon with planning approval for the project granted in January this year. **From Monday 22 June 2020** site establishment will commence and include activities such as:

- installation of temporary concrete barriers and construction hoarding near the Terminus Street entrance
- installation of temporary services support structure on Terminus Street
- service relocation on the station platform, and surveying and investigation work.

Equipment which will be used during this work will include mobile cranes, delivery trucks, surveying equipment, generators, power and hand tools.



*Artist's impression of the Petersham Station Upgrade. Indicative only.*

For more information call **1800 684 490**, email [projects@transport.nsw.gov.au](mailto:projects@transport.nsw.gov.au) or visit [transport.nsw.gov.au/Petersham](http://transport.nsw.gov.au/Petersham)  
For urgent enquiries or complaints regarding construction activities, please call 24 hours **1800 775 465**

## Upcoming weekend and night work

To ensure the safety of customers and workers, some work will need to be undertaken during Sydney Trains trackwork weekends. **The pedestrian footbridge across the station will remain open during these times.** For up to date information about services during these times please visit [transportnsw.info](https://transportnsw.info) or call **131 500**.

Dates	Work hours	Location	Activities
Saturday 20 and Sunday 21 June 2020	7am to 6pm	Station platforms and tracks	Relocation of services on the station platform Investigation work on platforms and tracks  This work will involve use of mobile generators, hand and power tools.
Saturday 11 to Monday 13 July 2020	4am Saturday to 2am Monday	Terminus Street and tracks	Piling to create foundations for a temporary protection wall within the rail corridor  Relocation of services from the brick boundary wall on Terminus Street onto a temporary steel structure within the rail corridor, and removing a small upper portion of the brick boundary wall on Terminus Street in preparation for the new lift lobby.  This work will involve use of a large mobile crane, truck-mounted crane, piling machinery, excavator, vacuum truck, concrete trucks/pumps, generators, concrete saws, power and hand tools.

## What you may notice

Where possible, measures will be implemented to reduce noise including turning off vehicles when not in use, monitoring noise, using non-tonal reversing beepers.

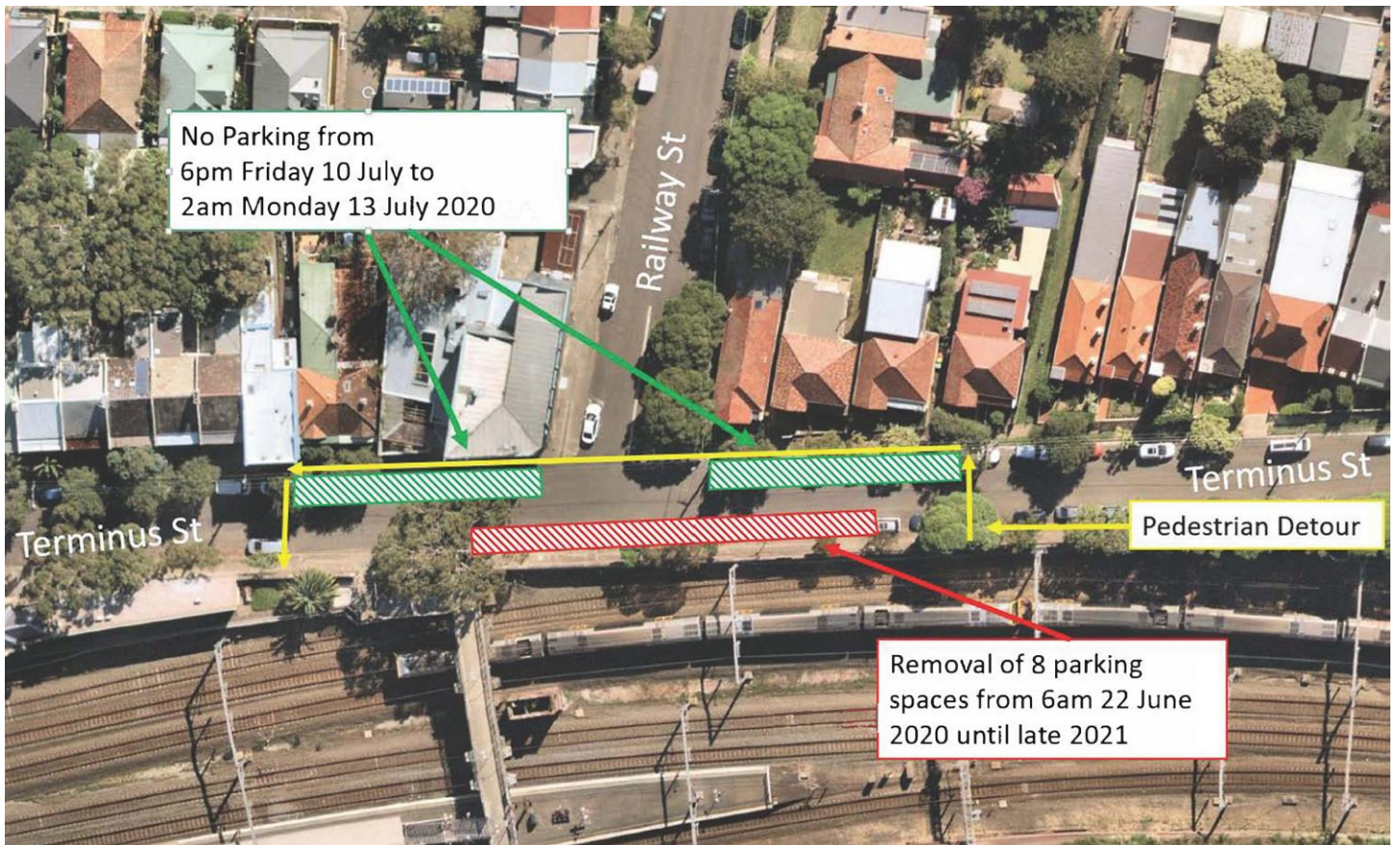
## Temporary parking and access changes

**From 6am Monday 22 June up to eight street parking spaces and a small section of footpath will be closed on Terminus Street (opposite Railway Street) to enable the safe construction of the new lift.** These arrangements will remain in place until late 2021.

The station entry on Terminus Street will remain open and a temporary pedestrian detour will be in place via the northern side of Terminus Street. Signage will be in place to help pedestrians with the temporary changes.

**Between 4am Saturday 11 July and 12am Monday 13 July 2020, a single lane closure on Terminus Street will be in place** to enable the safe operation of a crane for the weekend work being undertaken. **Up to additional eight parking spaces on Terminus Street will be closed** during this time to allow vehicles to move through the area during the lane closure. Traffic control and signage will be in place to help pedestrians and motorists with these temporary changes.

The map overleaf shows the location of the pedestrian detour and car space closures.



*Location of pedestrian detour and car space closure*

## Construction hours

To support the construction industry and continue the delivery of important infrastructure, the NSW Government has introduced new rules allowing construction sites to operate on weekends and public holidays.

**Standard construction hours are from 7am to 6pm every day, including public holidays.** These changes have been made to facilitate physical distancing on construction sites and support the health and wellbeing of workers.

We understand extending construction hours to include weekends and public holidays may cause disruption, but all efforts will be made to minimise impacts where possible and ensure strict environmental conditions relating to noise, vibration and dust management are adhered to

## Keep in touch

If you would like to be added to the project distribution list, or for more information on the Petersham Station Upgrade, please contact us on **1800 684 490** or email [projects@transport.nsw.gov.au](mailto:projects@transport.nsw.gov.au).

## Chinese

这份文件包含你所在地区公共交通工程项目的重要信息。如果你需要传译服务，请致电翻译与传译服务机构，电话 131 450，要求他们为你接通交通部 (Transport for NSW)，电话是 (02) 9200 0200。传译员会为你做翻译。

## Italian

Il presente documento contiene importanti informazioni sulle iniziative nel campo del trasporto pubblico nella vostra zona. Se desiderate i servizi di un interprete, contattate il Servizio traduzioni e interpreti al numero 131 450 indicando di voler parlare con Transport for NSW al numero (02) 9200 0200. L'interprete vi aiuterà a condurre la conversazione telefonica.

## Greek

Το παρόν έγγραφο περιέχει σημαντικές πληροφορίες σχετικά με δημόσια έργα μεταφορών στην περιοχή σας. Αν χρειάζεστε τις υπηρεσίες διερμηνέα, παρακαλούμε επικοινωνήστε με την Υπηρεσία Μεταφράσεων και Διερμηνείας στο 131 450 και ζητήστε τους τηλεφωνήσουν στις Συγκοινωνίες στη ΝΝΟ στο (02) 9200 0200. Ο διερμηνέας θα σας βοηθήσει στη συνέχεια με τη μετάφραση.

## Vietnamese

Tài liệu này có các thông tin quan trọng về các dự án giao thông công cộng trong khu vực của quý vị. Nếu quý vị cần sự giúp đỡ của thông dịch viên, xin vui lòng liên hệ với Dịch vụ Thông Phiên Dịch ở số điện thoại 131 450 và yêu cầu họ gọi cho Cơ quan Giao thông Tiểu bang NSW ở số điện thoại (02) 9200 0200. Sau đó thông dịch viên sẽ giúp thông dịch cho quý vị.



This document contains important information about public transport projects in your area. If you require the services of an interpreter, please contact the Translating and Interpreting Service on **131 450** and ask them to call Transport for NSW on **(02) 9200 0200**. The interpreter will then assist you with translation.