



Transport Access Program

Petersham Station Upgrade

Community notification

October 2020

Work continues on Petersham Station Upgrade

Construction for the Petersham Station Upgrade is progressing well. In September work was undertaken to prepare the lift well and lobby on Terminus Street. Activities will continue in October, and work will begin on Trafalgar Street. These activities include:

- construction on Trafalgar Street to upgrade the footpath and install a new ramp
- construction on Terminus Street in preparation for the new lift lobby including excavation and piling
- installation of a services track within the rail corridor (between the footbridge and the Sydney Trains training facility building).

Upcoming weekend work – 10 and 11 October 2020

In addition to activities during standard working hours, some weekend and night work will occur during a pre-determined Sydney Trains scheduled trackwork weekend. **During this weekend, as train services do not operate, the station and footbridge will also be closed.**

From **2am Saturday 10 October to 4am Monday 12 October**, work will be undertaken continuously on Trafalgar Street (eastbound) and within the station area. Work activities include:

- a large crane operating on Trafalgar Street to deliver equipment and material to the station platforms at the location of the lift well
- piling, excavation and concrete works on the station platforms and Trafalgar Street
- installing fencing on the station platforms around work areas
- installing fencing and scaffolding on Trafalgar Street to create a temporary work area for the construction of the new ramp.

For up to date information about train services during these times please visit transportnsw.info or call **131 500**.

Pedestrian and traffic detours during weekend work

Between **2am Saturday 10 October until 4am Monday 12 October 2020** there are changes on Trafalgar Street to enable the safe operation of a large mobile crane including:

- a temporary lane closure on Trafalgar Street (eastbound) to all vehicles (buses excepted) – **detour via New Canterbury Road**
- footpath closure (northern side of Trafalgar Street) – detour via the southern side of Trafalgar Street
- bus stop relocation – follow signage and the direction of traffic controllers to board/alight rail replacement buses and other services
- station footbridge closure – detour via the station underpass or Crystal Street overbridge and southern side of Trafalgar Street (step-free route).

Traffic control will be in place on Trafalgar Street and signage including variable message signs in place to help motorists and pedestrians with these temporary changes. Please refer to map below for more information and allow for extra travel time.

For up to date information about traffic conditions please visit livetraffic.com or use the Live Traffic App.

Thank you for your patience during this important work.

Temporary parking and access changes on Trafalgar Street

From **4am Friday 9 October** until **4am Monday 12 October 2020**, up to **19 parking spaces on Trafalgar Street, between Crystal Street and Audley Street** will be closed to allow a large crane to safely operate during the trackwork weekend.

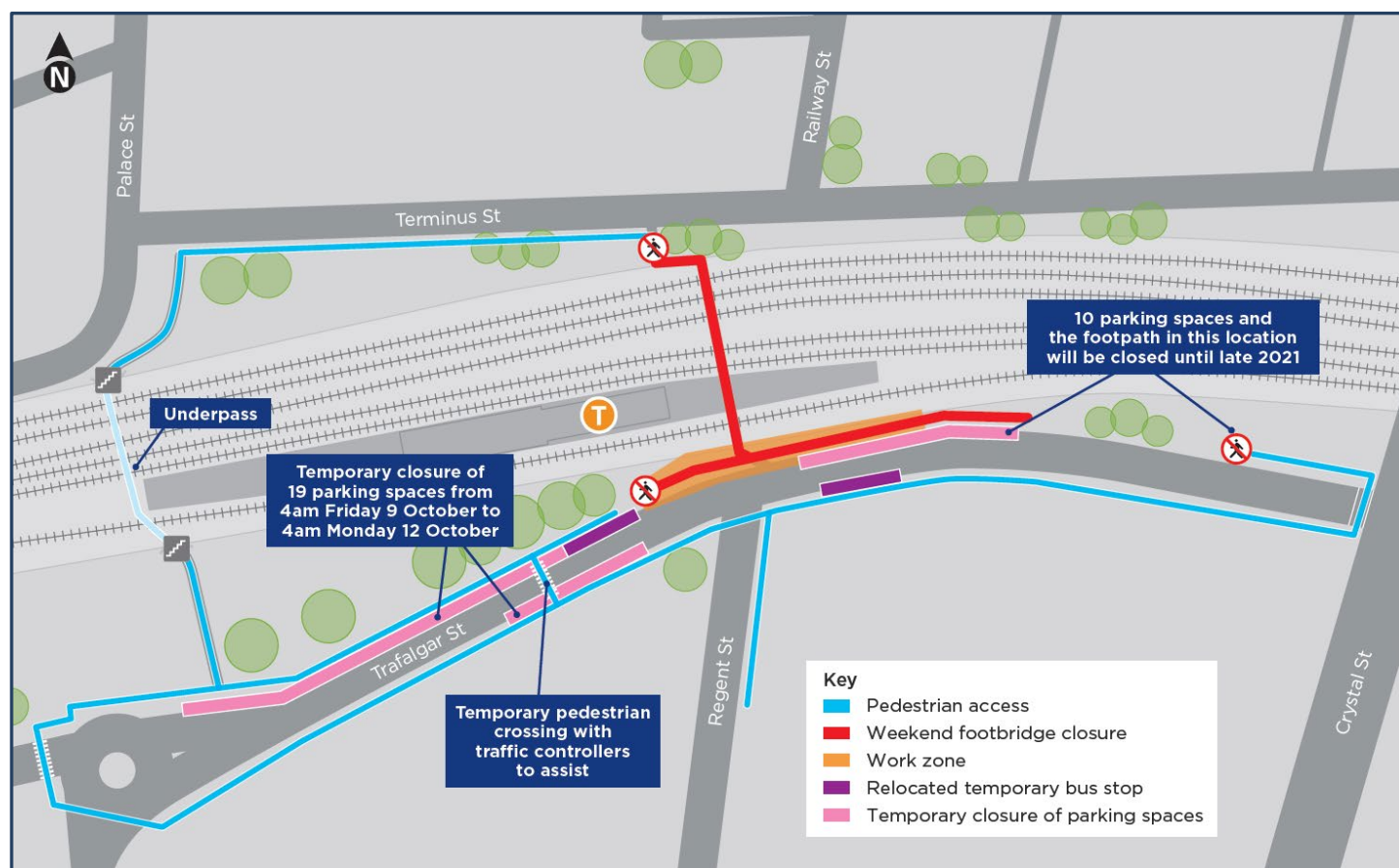
There will also be ongoing changes on Trafalgar Street (eastbound) following the October weekend work.

The footpath and a small section of Trafalgar Street kerb-side lane including 10 off-peak parking spaces will be closed from 4am Friday 9 October to allow for the construction of the new ramp. **This will remain in place until late-2021.** Please follow the temporary detour via Trafalgar Street (westbound) and allow for extra travel time.

Signage will be in place to help pedestrians and motorists with these temporary changes.

Please refer to map below for more information.

Map of temporary parking and access changes on Trafalgar Street



What you may notice

This work will involve use of a large mobile crane, piling rig, truck-mounted crane, excavator, vacuum truck, concrete trucks/pumps, mobile light towers, concrete saws, power and hand tools.

Other equipment to be used in construction activities throughout October include excavators, piling rig, delivery trucks, concrete saws, power and hand tools.

Where possible, measures will be implemented to reduce noise, including turning off vehicles when not in use, using solar powered lighting towers, monitoring noise and using non-tonal reversing beepers on our vehicles.

Construction hours

To support the construction industry and continue the delivery of important infrastructure, the NSW Government has introduced new rules allowing construction sites to operate on weekends and public holidays.

Standard construction hours are from 7am to 6pm every day, including public holidays. These changes have been made to facilitate physical distancing on construction sites and support the health and wellbeing of workers.

We understand extending construction hours to include weekends and public holidays may cause disruption, but all efforts will be made to minimise impacts where possible and ensure strict environmental conditions relating to noise, vibration and dust management are adhered to.

Keep in touch

If you would like to be added to the project distribution email list, or for more information on the Petersham Station Upgrade, please contact us on **1800 684 490** or email projects@transport.nsw.gov.au.



This document contains important information about public transport projects in your area. If you require the services of an interpreter, please contact the Translating and Interpreting Service on **131 450** and ask them to call Transport for NSW on **(02) 9200 0200**. The interpreter will then assist you with translation.

Chinese

这份文件包含你所在地区公共交通工程项目的重要信息。如果你需要传译服务，请致电翻译与传译服务机构，电话 131 450，要求他们为你接通交通部(Transport for NSW)，电话是 (02) 9200 0200。传译员会为你做翻译。

Italian

Il presente documento contiene importanti informazioni sulle iniziative nel campo del trasporto pubblico nella vostra zona. Se desiderate i servizi di un interprete, contattate il Servizio traduzioni e interpreti al numero 131 450 indicando di voler parlare con Transport for NSW al numero (02) 9200 0200. L'interprete vi aiuterà a condurre la conversazione telefonica.

Greek

Το παρόν έγγραφο περιέχει σημαντικές πληροφορίες σχετικά με δημόσια έργα μεταφορών στην περιοχή σας. Αν χρειάζεστε τις υπηρεσίες διερμηνέα, παρακαλούμε επικοινωνήστε με την Υπηρεσία Μεταφράσεων και Διερμηνείας στο 131 450 και ζητήστε τους τηλεφωνήσουν στις Συγκοινωνίες στη ΝΝΟ στο (02) 9200 0200. Ο διερμηνέας θα σας βοηθήσει στη συνέχεια με τη μετάφραση.

Vietnamese

Tài liệu này có các thông tin quan trọng về các dự án giao thông công cộng trong khu vực của quý vị. Nếu quý vị cần sự giúp đỡ của thông dịch viên, xin vui lòng liên hệ với Dịch vụ Thông Phiên Dịch ở số điện thoại 131 450 và yêu cầu họ gọi cho Cơ quan Giao thông Tiểu bang NSW ở số điện thoại (02) 9200 0200. Sau đó thông dịch viên sẽ giúp thông dịch cho quý vị.