



# Sutherland to Cronulla Active Transport Link

The Sutherland to Cronulla Active Transport Link is a pedestrian and bicycle path between Sutherland and Cronulla, making walking and bike riding a more convenient, safe and enjoyable transport option.

## Stage 1 is nearing completion

The community can now enjoy the near-completed pedestrian and bicycle path from McCubbens Lane in Sutherland to Fauna Place in Kirrawee.

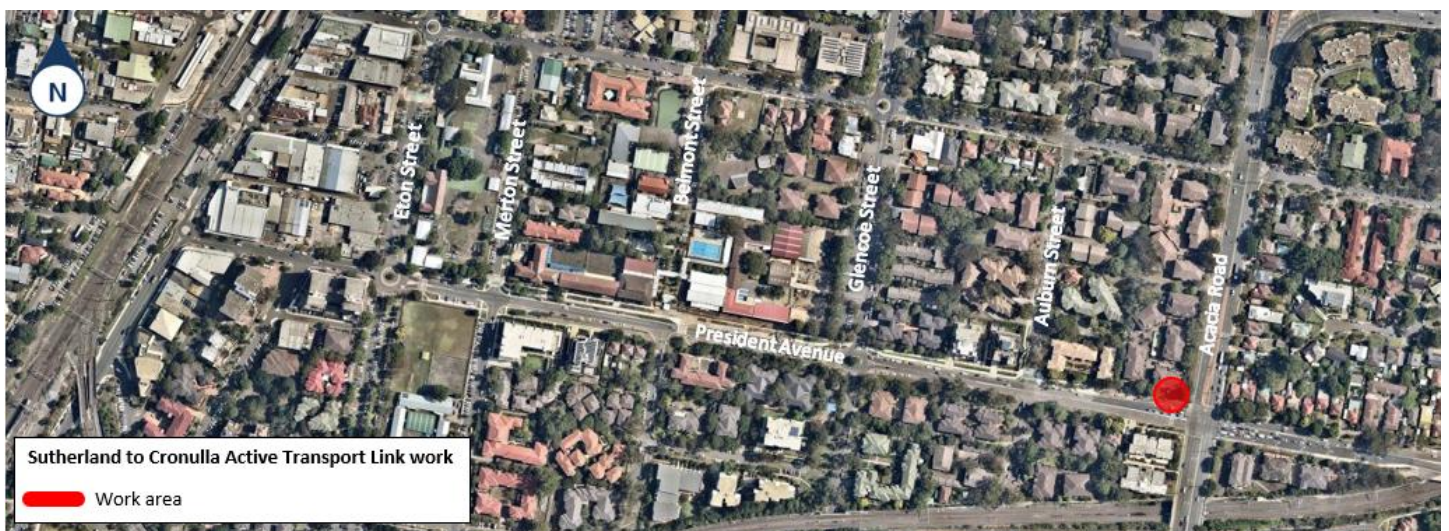
Limited work remains in select locations including power pole relocations, lighting installation and ongoing repairs and maintenance.

## Power pole relocation

A power pole on the corner of Acacia Road and President Avenue needs to be relocated. This work is planned to occur on President Avenue at Acacia Road on **Thursday 16 April 2020, between 6pm and 7am**, weather permitting.

The equipment to be used includes an elevated work platform, cranes and trucks.

Some noise will be associated with this work and power will be disrupted at times. Residents in close proximity will be provided further information and advised of power outages directly by Ausgrid.



This document contains important information about public transport projects in your area. If you require the services of an interpreter, please contact the Translating and Interpreting Service on **131 450** and ask them to call Transport for NSW on **(02) 9200 0200**. The interpreter will then assist you with translation.

For more information call **1800 684 490**, email [projects@transport.nsw.gov.au](mailto:projects@transport.nsw.gov.au) or visit [transport.nsw.gov.au/projects](http://transport.nsw.gov.au/projects)

For urgent enquiries or complaints regarding construction activities, please call 24 hours **1800 775 465**