



Sutherland to Cronulla Active Transport Link

Project Update

April 2020

The Sutherland to Cronulla Active Transport Link is a pedestrian and bicycle path between Sutherland and Cronulla, making walking and cycling a more convenient, safe and enjoyable transport option. The first stage between Sutherland and Kirrawee connects key destinations such as transport interchanges, schools, residential areas and business precincts.

Stage one is almost complete

The community can now enjoy the near-completed pedestrian and bicycle path from McCubbens Lane in Sutherland to Fauna Place in Kirrawee.

Limited work remains in select locations to relocate power poles and improve street lighting in targeted locations.

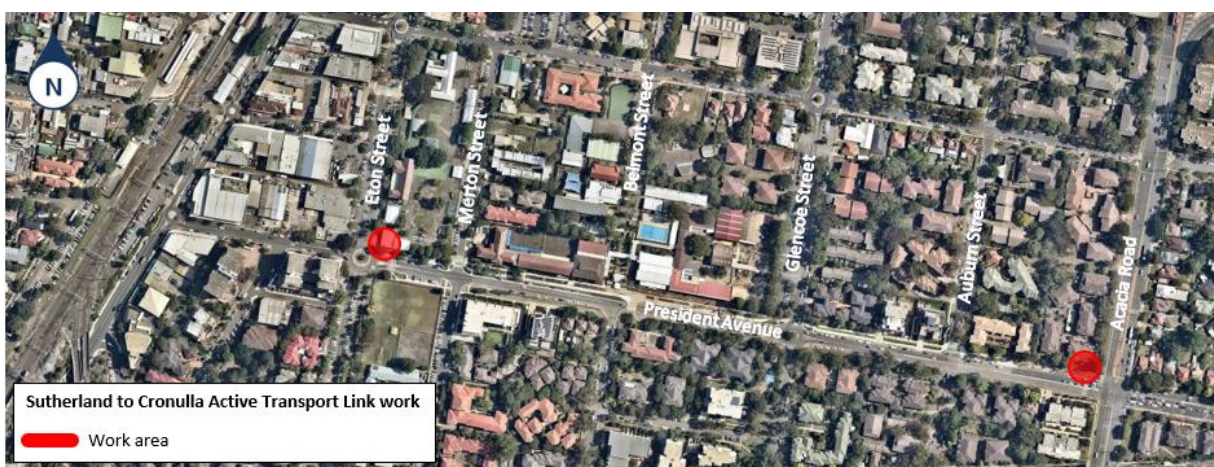
Power pole relocation

There are power poles on the corner of Eton Street and Acacia Road which need to be relocated, and one pole removed.

Subject to approval, this work is planned to occur on President Avenue between Eton Street and Merton Street, and at Acacia Road on both **Thursday 2 April** and **Thursday 16 April** 2020 between **Thursday 5pm to Friday 6am**, weather permitting.

The equipment to be used includes an elevated work platform, cranes and trucks.

Some noise may be associated with this work. Residents in close proximity will be given further information closer to the date and if affected by power outages, contacted directly by Ausgrid.



This document contains important information about public transport projects in your area. If you require the services of an interpreter, please contact the Translating and Interpreting Service on **131 450** and ask them to call Transport for NSW on **(02) 9200 0200**. The interpreter will then assist you with translation.

For more information call **1800 684 490**,
email projects@transport.nsw.gov.au or visit transport.nsw.gov.au/projects
For urgent enquiries or complaints regarding construction activities, please call 24 hours **1800 775 465**