



Sutherland to Cronulla Active Transport Link

Project Update

May 2020

The Sutherland to Cronulla Active Transport Link is a pedestrian and bicycle path between Sutherland and Cronulla, making walking and bike riding a more convenient, safe and enjoyable transport option.

The first stage between Sutherland and Kirrawee will connect key destinations such as transport interchanges, schools, residential areas and business precincts.

Continuing work at Sutherland

Work will continue on President Avenue between Fauna Place and the start of Pollard Park to complete the new pedestrian and bicycle path. Work along this section will include constructing a new bicycle path to Pollard Park and relocating a power pole.

Work will also commence at the intersection of Acacia Road and President Avenue to install new storm water drainage, concreting, line marking and to reconfigure the traffic signals at the intersection.

See the map overleaf for further information.

Night work

Some work is required outside standard hours to minimise impacts on local traffic and to improve safety for pedestrians and workers.

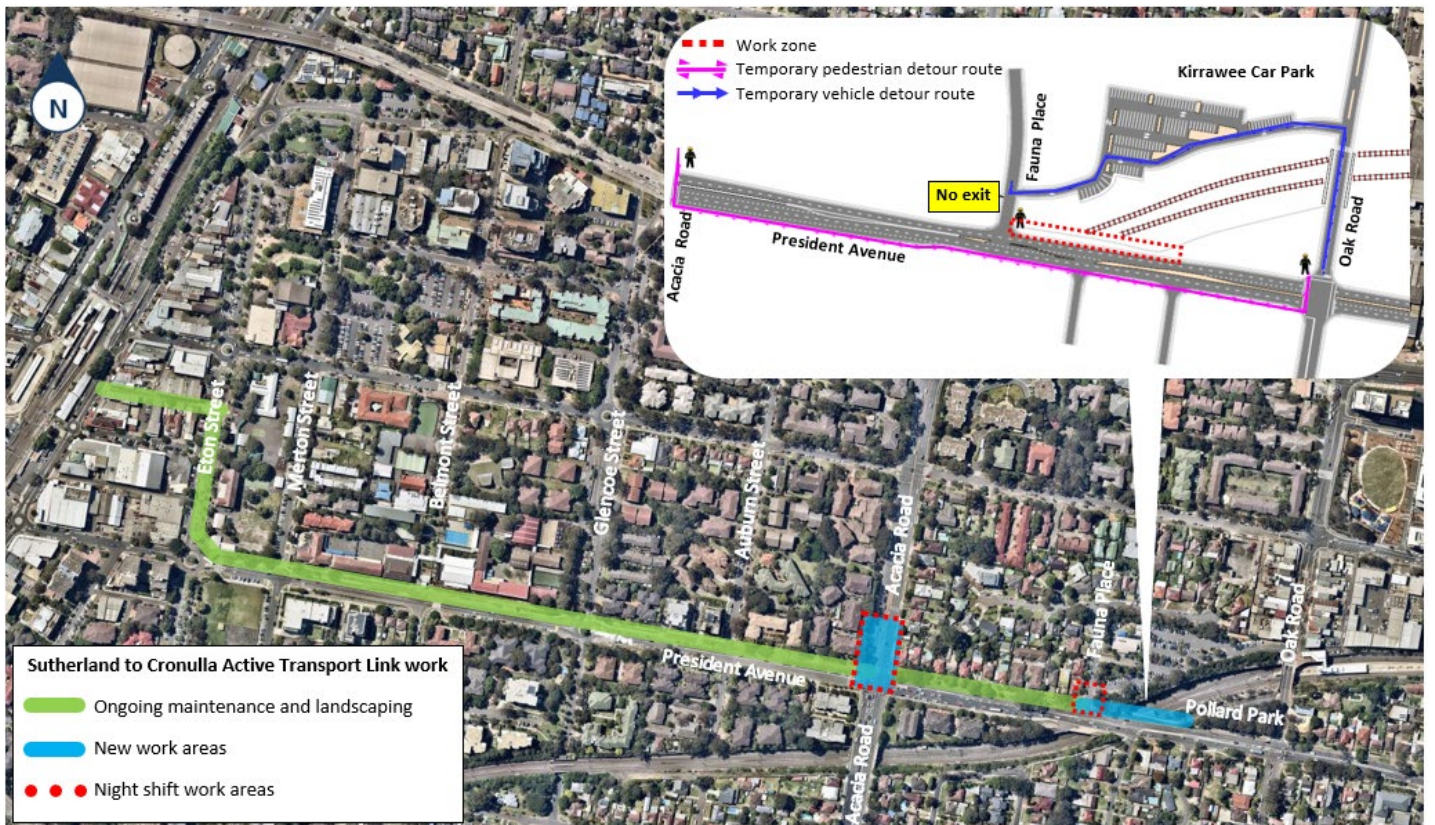
We require **seven night shifts** between **Monday 18 May** and **Wednesday 10 June 2020** to complete the reconfiguration of the traffic signals at the intersection, concreting, asphaltting and line marking. Each night shift will be between **6pm and 5am** (weather permitting).

Residents close to the night work will be provided detailed information closer to the time. Signage will also be installed to remind residents, pedestrians and motorists of pedestrian and traffic changes.

We also require **two night shifts** between **Monday 18 May 2020** and **Monday 8 June 2020**, between **6pm and 5am** (weather permitting), to relocate a power pole on Fauna Place.

This work may be noisy at times, as it includes truck movements, excavating, saw-cutting, jack hammering, line marking, concreting and asphaltting.

We will implement measures to minimise impacts on the community by completing noisier works as early as possible, switching equipment off when not in use, placing equipment as far away from residential properties as possible, and monitoring our work to ensure noise levels are being managed effectively.



Traffic changes

There will be pedestrian and vehicle detours in place while work occurs between Fauna Place and the start of Pollard Park. Please follow the signage and directions of traffic controllers.

During our work hours, access from Fauna Place onto President Avenue will be temporarily unavailable from **Monday 4 May** until **Friday 22 May 2020**. Local residents can still enter Fauna Place from President Avenue but will need to exit Fauna Place through the commuter car park onto Oak Road.

Temporary lane closures and traffic detours may be in place during the work. Pedestrian access will be maintained at all times.

Please keep to the speed limits and follow signs and traffic controllers' directions.

Keeping the community informed

We will conduct ongoing landscaping and maintenance work along the new pathway until the project is complete.

We will keep the community informed of upcoming work via regular notifications and updates on our website.

If you would like to speak to the project team about this work, please contact us on **1800 684 490** or email projects@transport.nsw.gov.au.



This document contains important information about public transport projects in your area. If you require the services of an interpreter, please contact the Translating and Interpreting Service on **131 450** and ask them to call Transport for NSW on **(02) 9200 0200**. The interpreter will then assist you with translation.

For more information call **1800 684 490**,
email projects@transport.nsw.gov.au or visit transport.nsw.gov.au/projects
For urgent enquiries or complaints regarding construction activities, please call 24 hours **1800 775 465**