

New Intercity Fleet

Springwood to Lithgow Rail Corridor Modifications

Community Notification – Ten Tunnels Deviation

The NSW Government is delivering a New Intercity Fleet to replace trains carrying customers between Sydney and the Central Coast, Newcastle, the Blue Mountains and the South Coast.

The new trains will feature:

- wider seats with arm rests, tray tables and high seat backs
- two-by-two seating for extra room and comfort
- improved accessibility including wheelchair access and accessible toilets
- improved customer information through digital information screens and announcements
- dedicated spaces for luggage, prams, bicycles and wheelchairs
- charging ports for electronic devices
- CCTV and help points
- modern heating and air conditioning

Project overview

Modifications are needed along the rail corridor between Springwood and Lithgow stations, including minor modifications to the Ten Tunnels Deviation (between Newnes Junction and Zig Zag stations) to allow the New Intercity Fleet trains to service customers all the way to Lithgow.

The modifications, which were always part of the New Intercity Fleet project, ensure the Blue Mountains Line meets modern standards and is consistent with the rest of the electrified rail network.

Upcoming work

7am to 7pm weekdays from Monday 20 January to Friday 6 March 2020

During this period, the following activities will be undertaken:

- Tunnel lining modifications
- Services relocations
- Site preparation and enabling works
- Use of site compounds

All work will be carried out in the rail corridor.

Construction vehicles will access the site via **Chifley Road**.

Temporary closure of the Blue Mountains Line

Due to infrastructure damage caused by the bushfires, there are currently partial closures on sections on the Blue Mountains Line, with buses replacing trains between Mount Victoria, Lithgow and Bathurst.

Please contact Transport Info on **131 500** or visit transportnsw.info for more information about replacement transport services.

Project update

Some work planned for the Springwood to Lithgow Rail Corridor Modifications Project in December was postponed due to the bushfires.

As a result of the temporary closure of the Blue Mountains Line, this work is being rescheduled to take place as soon as possible, both during standard construction hours and during a planned possession in February and March.

We will be working in the Ten Tunnels Deviation from **Monday 20 January** to carry out the work activities listed above.

The project is still expected to be complete by mid-2020.

Equipment:

The following equipment will be used to complete the work:

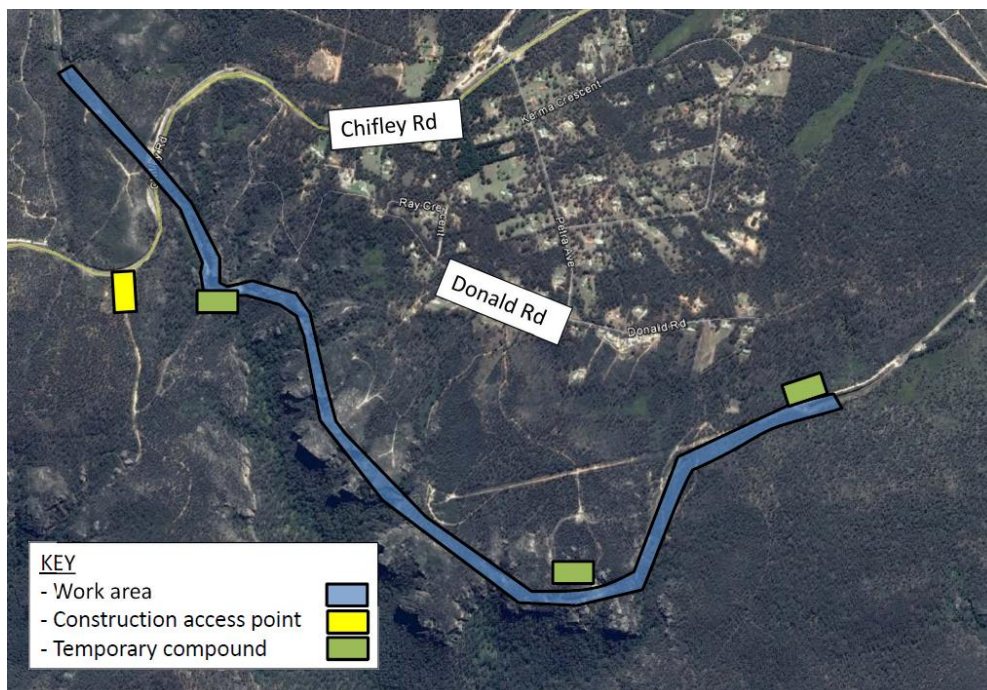
- Excavators
- Drill rig
- Concrete agitator
- Concrete saws
- Ventilation equipment
- Vacuum trucks
- Generators
- Water carts
- Hand tools
- Lighting towers
- Construction vehicles

What you may notice

Every effort will be made to minimise construction impacts to the local community.

The work may be noisy at times, however we will take every possible step to reduce noise like turning equipment off when not in use.

Map of work area - Ten Tunnels Deviation



This document contains information about public transport projects in your area. If you require the services of an interpreter, please contact the Translating and Interpreting Service on **131 450** and ask them to call the Transport Projects Division on **(02) 9200 0200**. The interpreter will then assist you with translation.