



West of Bankstown rail services in 2024

Consultation findings

Transport for NSW is currently planning how rail services on the T3 Bankstown Line for stations west of Bankstown will operate as part of the integration of Sydney Metro City & Southwest in 2024.

This integration includes upgrading the existing suburban line between Bankstown and Sydenham to metro rail standards, which means services west of Bankstown will need to operate differently.

Earlier this year, customers were invited to provide their feedback on three proposed rail service options:

- **Option 1:** shuttle services between Bankstown and Liverpool, and Bankstown and Lidcombe
- **Option 2:** services between Liverpool and the City Circle via Regents Park and shuttle services between Bankstown and Lidcombe (this is Transport for NSW's preferred option)
- **Option 3:** services between Bankstown and the City Circle via Regents Park and shuttle services between Bankstown and Liverpool

About 600 formal submissions from a wide cross-section of the community were received, mainly via an online survey.

Many customers cited direct access to the Sydney CBD as the most important consideration.

A community consultation report has now been released, confirming that the second of the three options has been chosen based on community feedback and an analysis of Opal data.

Option 2 ensures the vast majority of existing T3 customers in the southwest continue to receive direct access to the Sydney CBD. It also maintains similar travel times as today, while minimising the impact to services elsewhere on the network.

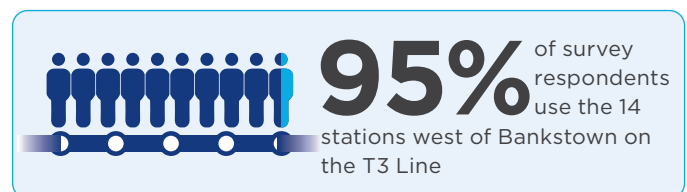
Transport for NSW will progress service option 2 into the next phase of planning and development.

What the community told us

Community feedback showed a strong preference for option 2 for three key reasons:

- Direct service to and from the Sydney CBD maintained for most customers
- Better or more direct access to other locations such as the Inner West
- Less crowding on services and at stations due to more even spread of South West Sydney customers across the network

Options 1 and 3 both received significantly less community support as they provide no customers

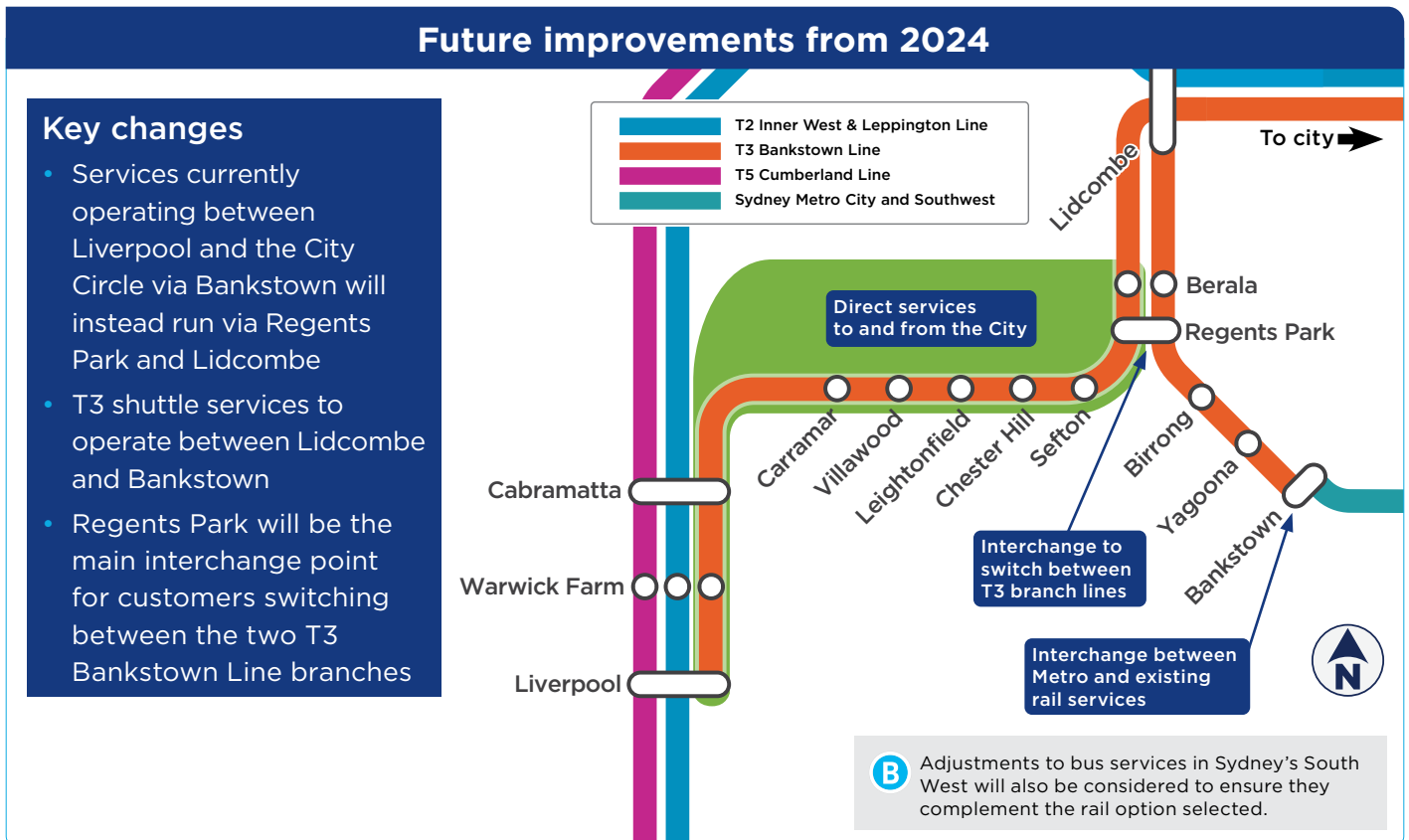


or fewer customers with direct services to and from the Sydney CBD.

For more details on the community consultation, the full report is available at yoursay.transport.nsw.gov.au/west-of-bankstown

What this means for customers

- **Liverpool to Sefton, Regents Park and Berala** customers continue to have direct services to and from the City Circle, with similar journey times to today. This will be the fastest direct option to and from the Sydney CBD.
- Most southwest customers will have direct connections to the Inner West and improved links to Parramatta.
- **Liverpool to Cabramatta** customers will also be able to travel on existing T2 services via Granville as they do today.
- **Yagoona and Birrong** customers can change at Bankstown for turn-up-and-go Metro services or travel to Lidcombe or Regents Park for continued access to other suburban train services to the city and elsewhere.



Next steps

Based on community feedback and Opal data, Transport for NSW will progress service option 2 into the next phase of planning and development.

This decision now gives customers certainty as to how services will operate to and from west of Bankstown stations in 2024.

We will continue to listen to and update the community as service plans are developed and the project progresses.

For more information or a copy of the consultation report

Phone 1800 684 490

Email projects@transport.nsw.gov.au

Visit yoursay.transport.nsw.gov.au/west-of-bankstown

