

Weekend work – 3-5 October 2020

To ensure the safety of customers and workers, some work will need to be undertaken during a Sydney Trains scheduled trackwork period while train services do not operate.

The work will be carried out from 6am to 6pm on Saturday 3, Sunday 4 and Monday 5 October 2020. The work will include:

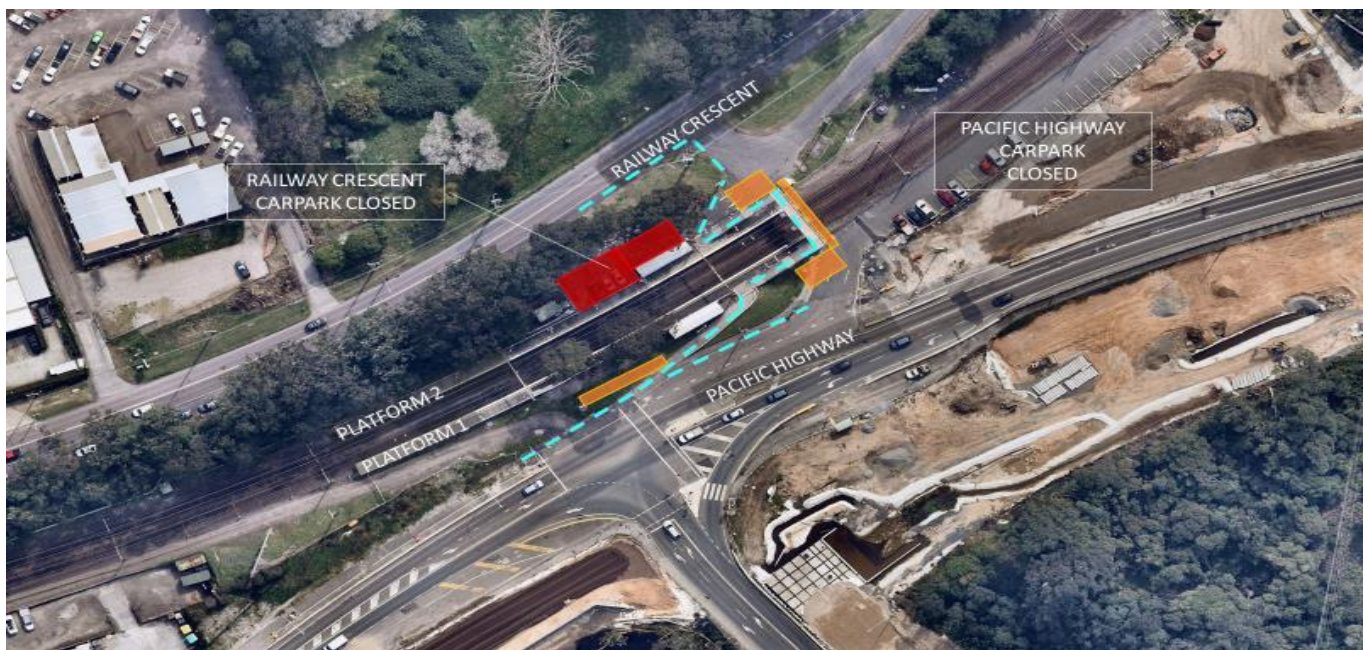
- service relocation and containment
- geotechnical investigations throughout the station precinct
- Installation of temporary fencing
- vegetation trimming and removal.

The work will involve vacuum trucks, piling rigs, excavators, elevated working platforms and hand tools.




Both Railway Crescent and Pacific Highway commuter car parks will be closed while work is carried out on the October long weekend. Access to the station footbridge will remain available from both sides via temporary fencing to divert pedestrians through the construction zones. Traffic control and signage will be in place to help with these diversions. Please see map below for work and compound locations, parking changes and pedestrian access.

The station will be closed during this time. Please visit www.transportnsw.info or call **131 500** for information about replacement buses.

Temporary access changes during October long weekend work



Lisarow Station Upgrade map legend:

-  Temporary work zones for lifts and ramps
-  Construction site compound area
-  Pedestrian access to/from footbridge during 3,4,5 October 2020 weekend work.

Station is closed and trains do not operate. Carparking will be affected. Signage will provide guidance around work areas.

Keeping the community informed

Transport for NSW is committed to keeping the community informed throughout the delivery of the project. You can stay informed via regular updates to the project website transport.nsw.gov.au/lisarow. We will also keep the community informed via newsletters, advertisements and signage.

For further information on the project or to receive project updates via email, please call the Project Infoline on **1800 684 490** or email projects@transport.nsw.gov.au. For all urgent enquiries or complaints regarding construction activities, please call our 24-hour Construction Response Line on **1800 775 465**.

Arabic:

تتضمن هذه الوثيقة معلومات عن مشاريع النقل العام في منطقتكم. إذا كنتم بحاجة إلى خدمات مترجم، الرجاء الإتصال بخدمة الترجمة الشفهية والخطية على رقم 131 450 واطلبوا منهم ان يتصلوا بمصلحة المواصلات في نيو ساوث ويلز على رقم 0200 9200 (02). عندها يساعدكم المترجم بالترجمة.

Hindi:

इस दतावज म आपके इलाके के सावजनिक-
रपरवहन रपरयोजनाओं के बारे म
महवपणर् जानकारी रसरमलत ह। रयद आपको दुभार्
षए की सवा की आवयकता हंतो कृपया 131 450 पर
रैलार् टंग एड इटपर् टंग ररररररर
संपकर् कर और उनसे (02) 9200 0200 पर रैपोटर्
प्राजर्कस को फ्रनकरनक
रू लए कह। उसके बाद दुभार् षय आपको अनवाद
करनम सहायता देगा।

Filipino:

Ang dokumentong ito ay naglalaman ng mahalagang impormasyon tungkol sa mga proyektong transportasyon na pampubliko sa inyong lugar. Kung kailangan ninyo ng serbisyo ng tagapagpaliwanag, makipag-ugnayan po sa Serbisyo ng Pagsasalin at Pagpapaliwanag sa 131 450 at hilingan silang tawagan ang Transportasyon para sa NSW sa (02) 9200 0200. Tutulungan kayo ng tagapagpaliwanag sa pagsasalin.

Tagalog:

Ang dokumentong ito ay naglalaman ng mga mahahalagang impormasyon tungkol sa mga proyekto sa pampublikong transportasyon ng inyong lugar. Kung kayo ay nangangailangan ng serbisyo ng isang interpreter, tawagan po lamang ang Translating and Interpreting Service sa 131 450 at pakiusapan silang tumawag sa "Transport for NSW" sa (02) 9200 0200. Ang interpreter ay tutulungan kayo sa pagsasalin-wika.



This document contains important information about public transport projects in your area. If you require the services of an interpreter, please contact the Translating and Interpreting Service on **131 450** and ask them to call Transport for NSW on **(02) 9200 0200**. The interpreter will then assist you with translation.

For more information call **1800 684 490**.

Email projects@transport.nsw.gov.au or visit transport.nsw.gov.au/lisarow

For urgent enquiries or complaints regarding construction activities, please call 24 hours **1800 775 465**