



Transport Access Program

Narara Station Upgrade

Project update

January 2021



Construction on the Narara Station upgrade is progressing well with piling and construction of the lift shafts and tree removal and trimming underway during December.

Upcoming work

Work will continue in January and includes:

- utility investigations and site surveying work
- installation of hoarding around the lift shaft locations
- piling for the lift shafts
- lift shaft construction and installation work.

Equipment to be used includes surveying equipment, piling rigs, vacuum trucks, elevated working platforms, excavators, cranes, semi-trailers, wood chippers, light vehicles and hand tools.

For more information call **1800 684 490**,

Email projects@transport.nsw.gov.au or visit www.transport.nsw.gov.au/narara

For urgent enquiries or complaints regarding construction activities, please call 24 hours **1800 775 465**

Weekend work – 30 to 31 January 2021

Weekend work will be carried out from **6am to 6pm on Saturday 30 and Sunday 31 January 2021**. The work will include installation of the lift shafts.

Equipment to be used includes vacuum trucks, piling rigs, excavators, elevated working platforms, cranes, semi-trailers and hand tools.

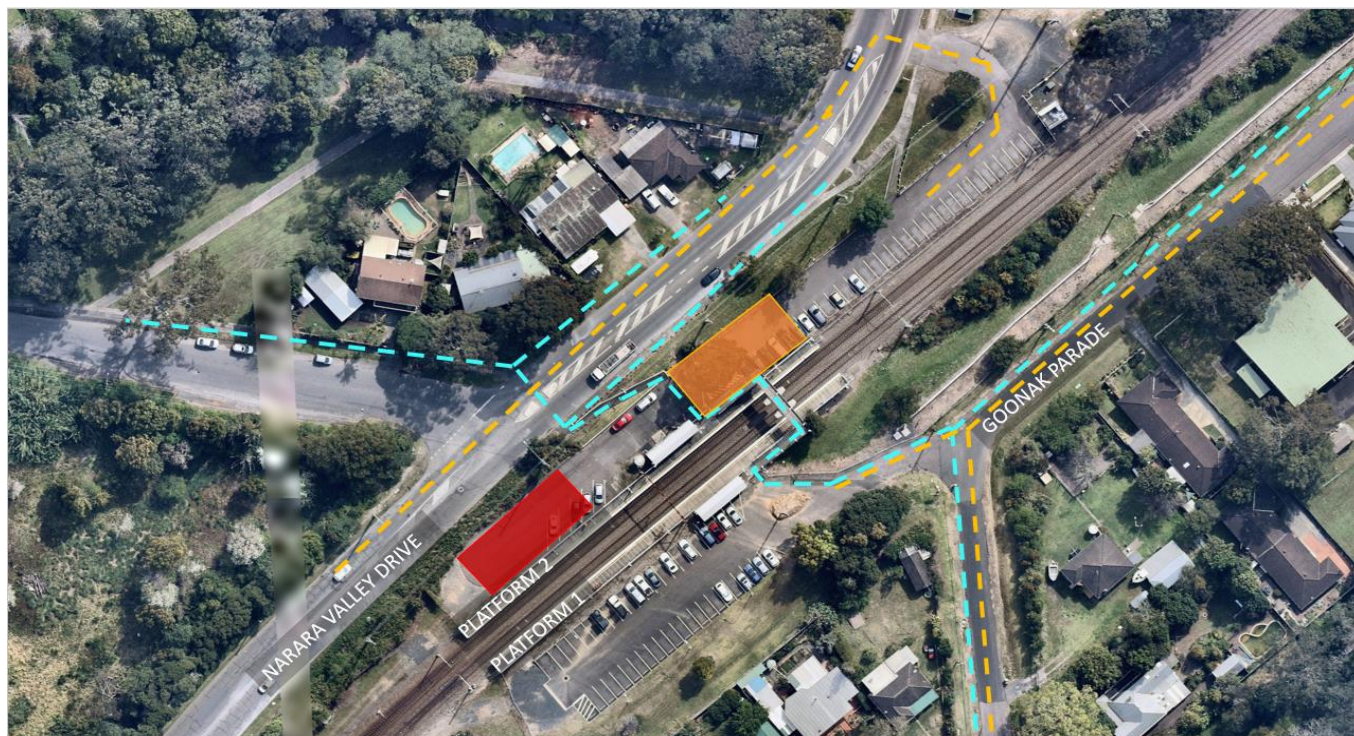
Wherever possible, measures to reduce noise will be implemented including turning equipment off when not in use, positioning equipment as far away from residences as possible, monitoring noise, using non-tonal reversing beepers and stopping work for respite periods.

Temporary changes to commuter parking





During January, up to seven car parking spaces will be temporarily unavailable in Narara Valley Drive Commuter Car Park and Goonak Parade Commuter Car Park during the piling and lift shaft installation work.

Goonak Parade commuter carpark will also be temporarily closed from 6am to 6pm on Saturday 30 and Sunday 31 January 2021 for this work.

Traffic control will be in place to assist road users and pedestrians. Please see the map below for more information.



Narara Station Upgrade map legend:

-  Work zones for piling and lift construction works
-  Construction site compound area
-  Pedestrian access to/from footbridge
-  Vehicle and Plant access to site

For more information call **1800 684 490**,

Email projects@transport.nsw.gov.au or visit transport.nsw.gov.au/narara

For urgent enquiries or complaints regarding construction activities, please call 24 hours **1800 775 465**

Construction hours

Standard construction hours are 7am to 6pm Monday to Friday and 8am to 1pm on Saturdays. We will notify nearby residents and businesses in advance if work needs to be completed outside these times.

Keep in touch

Transport for NSW is committed to keeping the community informed throughout the delivery of the project. You can stay informed via the project website transport.nsw.gov.au/narara. We will also keep the community informed via newsletters, advertisements and signage.

For further information on the project or to receive project updates via email, please call the Project Infoline on **1800 684 490** or email projects@transport.nsw.gov.au.

For all urgent enquiries or complaints regarding construction activities, please call our 24-hour Construction Response Line on **1800 775 465**.

Chinese

这份文件包含你所在地区公共交通工程项目的重要信息。如果你需要传译服务，请致电翻译与传译服务机构，电话 131 450，要求他们为你接通交通部 (Transport for NSW)，电话是 (02) 9200 0200。传译员会为你做翻译。

Italian

Il presente documento contiene importanti informazioni sulle iniziative nel campo del trasporto pubblico nella vostra zona. Se desiderate i servizi di un interprete, contattate il Servizio traduzioni e interpreti al numero 131 450 indicando di voler parlare con Transport for NSW al numero (02) 9200 0200. L'interprete vi aiuterà a condurre la conversazione telefonica

Arabic

تتضمن هذه الوثيقة معلومات عن مشاريع النقل العام في منطقتكم . إذا كنتم بحاجة إلى خدمات مترجم، الرجاء الإتصال بخدمة الترجمة الشفهية والخطية على رقم 131 450 واطلبوا منهم ان يتصلوا بمصلحة المواصلات في نيو ساوث ويلز على رقم (02) 9200 0200. عندها يساعدهم المترجم بالترجمة

Turkish

Bu belge bölgenizdeki toplu taşıma projeleri konusunda önemli bilgileri kapsamaktadır. Eğer bir tercümanlık hizmetine ihtiyacınız varsa, 131 450 numaralı telefondan Translating and Interpreting Service'i arayınız ve onlardan (02) 9200 0200 numaradan NSW İçin Ulaşım'ı (Transport for NSW) aramalarını isteyiniz. Tercüman bu aşamada devreye girip size yardımcı olacaktır.



This document contains important information about public transport projects in your area. If you require the services of an interpreter, please contact the Translating and Interpreting Service on **131 450** and ask them to call Transport for NSW on **(02) 9200 0200**. The interpreter will then assist you with translation.