



# Transport Access Program

## Narara Station Upgrade

Project update

October 2020



Artist's impression of the Narara Station Upgrade, subject to detailed design

## The NSW Government is improving accessibility at Narara Station

Planning approval for the Narara Station Upgrade has been granted.

The upgrade is part of the Transport Access Program, a NSW Government initiative to provide a better experience for public transport customers by delivering accessible, modern, secure and integrated transport infrastructure across the state.

The approval follows the public display of the Review of Environmental Factors from 5 to 19 August 2020, and preparation of a Determination Report. The Determination Report and planning approval conditions are available at [www.transport.nsw.gov.au/narara](http://www.transport.nsw.gov.au/narara).

**We would like to thank the community for their feedback during the planning process.**

Further information about the feedback received during the public display period and how it was considered can also be found in the Determination Report.

Site establishment and construction will commence in late September 2020.

For more information call **1800 684 490**,

Email [projects@transport.nsw.gov.au](mailto:projects@transport.nsw.gov.au) or visit [www.transport.nsw.gov.au/narara](http://www.transport.nsw.gov.au/narara)

For urgent enquiries or complaints regarding construction activities, please call 24 hours **1800 775 465**

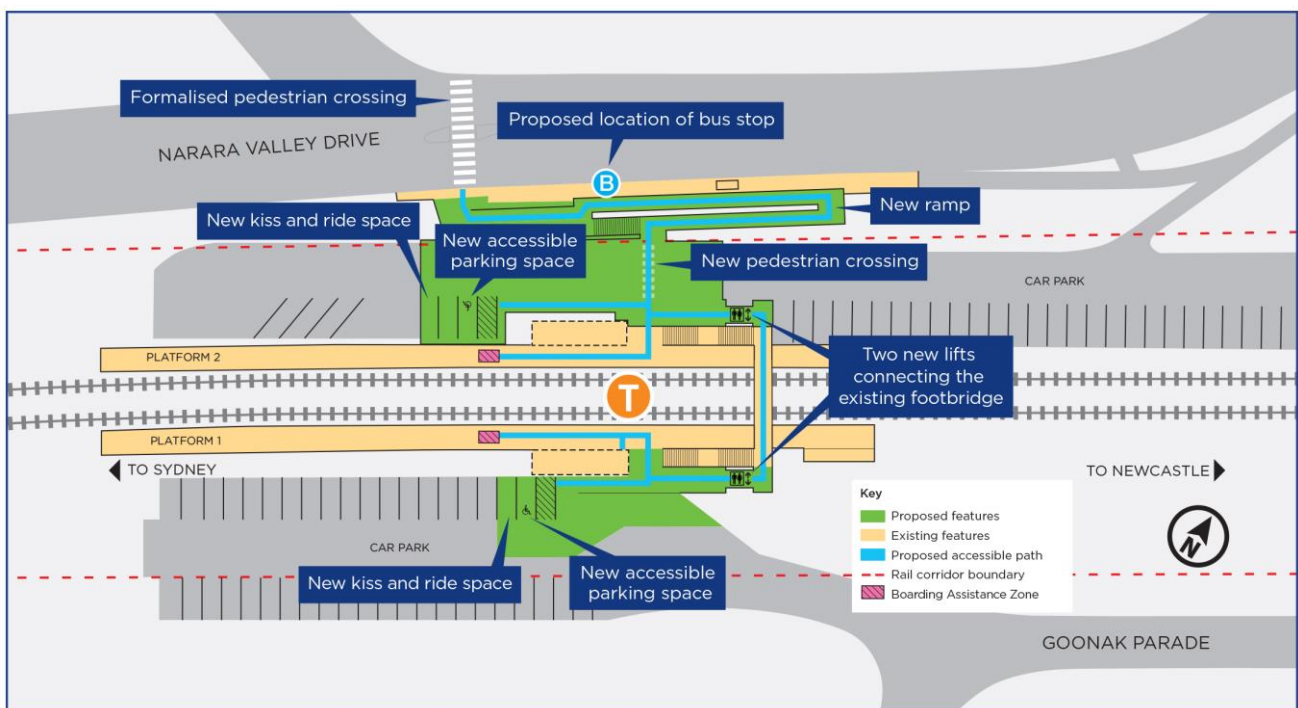
## Project overview

Transport for NSW is upgrading Narara Station to make it easier for everyone to access, including people with a disability or limited mobility, parents/carers with prams, and customers with luggage.

The project includes:

- two new lifts connecting the platforms to the existing footbridge and commuter car parks
- a new accessible parking space and kiss and ride space in both commuter car parks
- a new accessible path and stairs from the station to Narara Valley Drive
- a new pedestrian crossing across the northern commuter car park
- formalised pedestrian crossing on Narara Valley Drive
- platform regrading and installation of new tactiles
- relocation of the existing southbound bus stop on Narara Valley Drive
- formalised Boarding Assistance Zones on each platform
- upgrades to lighting, electrical infrastructure and CCTV.

## Key features of Narara Station Upgrade, subject to detailed design



## Site establishment and upcoming work

From **Wednesday 30 September 2020**, site establishment and investigation work will start. This work will continue throughout September and October during standard construction hours, **7am to 6pm Monday to Friday and 8am to 1pm on Saturdays**. Activities will include:

- utility investigations and site surveying work
- geotechnical investigations throughout the station precinct
- site establishment and office set up.

Equipment to be used includes surveying equipment, small drilling rigs, vacuum trucks, mini loaders, excavators, cranes, light vehicles and hand tools. Please see the map overleaf for more information.

For more information call **1800 684 490**,

Email [projects@transport.nsw.gov.au](mailto:projects@transport.nsw.gov.au) or visit [transport.nsw.gov.au/narara](http://transport.nsw.gov.au/narara)

For urgent enquiries or complaints regarding construction activities, please call 24 hours **1800 775 465**

## Weekend work – 3-5 October 2020

For the safety of our staff and customers, work will take place during a scheduled Sydney Trains trackwork weekend, when train services do not operate and the station is closed.

**Work will be carried out between 6am and 6pm on Saturday 3 to Monday 5 October 2020.**

The work will include:

- service relocation and conduit installation
- geotechnical investigations throughout the station precinct
- installation of temporary fencing
- vegetation trimming and tree removal at the Goonak Parade station entrance next to the footbridge.

The work will involve vacuum trucks, piling rig excavators, elevated working platforms and hand tools. Please see the map overleaf for more information.

Access to the footbridge from both commuter car parks will remain open. Traffic control will be in place to assist pedestrians and temporary fencing will be used to divert pedestrians through the construction zones safely.

Wherever possible, measures to reduce noise will be implemented including turning equipment off when not in use, positioning equipment as far away from residences as possible, monitoring noise, using non-tonal reversing beepers and stopping work for respite periods.

Nearby residents and businesses will be notified before work outside these hours take place.

For up to date information about replacement bus services during these times please visit [transportnsw.info](https://transportnsw.info) or call **131 500**.

## Temporary changes to parking

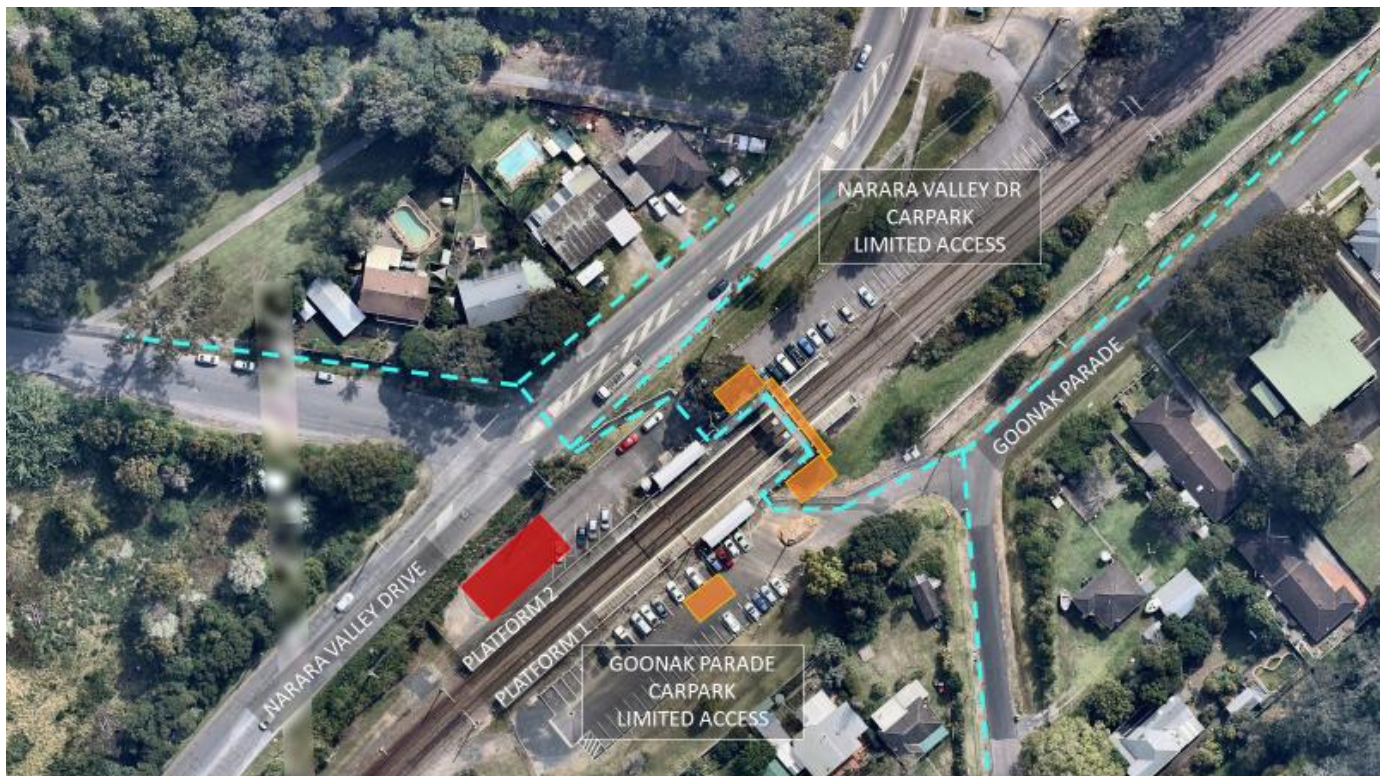
From **7am Wednesday 30 September** until **late 2021** up to seven spaces will be temporarily unavailable in the south-western corner of Narara Valley Drive commuter car park to allow for the installation of a site compound and material storage. The remaining spaces will continue to be available for customers.

Between **6am and 6pm on Saturday 3 to Monday 5 October 2020** up to four spaces will be temporarily unavailable in Goonak Parade commuter car park while work is carried out on the footbridge and establishment of temporary access ramp for future construction.

Traffic control and signs will be in place to help customers with the temporary changes.



## Temporary access changes during October long weekend work



### Narara Station Upgrade map legend:



Temporary work zones for lifts and ramps



Construction site compound area



Pedestrian access to/from footbridge during 3,4,5 October 2020 weekend work.

**Station is closed and trains do not operate.** Carparking will be affected. Signage will provide guidance around work areas.

## Keep in touch

Transport for NSW is committed to keeping the community informed throughout the delivery of the project. You can stay informed via the project website [transport.nsw.gov.au/narara](https://transport.nsw.gov.au/narara). We will also keep the community informed via newsletters, advertisements and signage.

For further information on the project or to receive project updates via email, please call the Project Infoline on **1800 684 490** or email [projects@transport.nsw.gov.au](mailto:projects@transport.nsw.gov.au).

For all urgent enquiries or complaints regarding construction activities, please call our 24-hour Construction Response Line on **1800 775 465**.



This document contains important information about public transport projects in your area. If you require the services of an interpreter, please contact the Translating and Interpreting Service on **131 450** and ask them to call Transport for NSW on **(02) 9200 0200**. The interpreter will then assist you with translation.

For more information call **1800 684 490**,

Email [projects@transport.nsw.gov.au](mailto:projects@transport.nsw.gov.au) or visit [transport.nsw.gov.au/narara](https://transport.nsw.gov.au/narara)

For urgent enquiries or complaints regarding construction activities, please call 24 hours **1800 775 465**