

Transport Access Program

Waratah Station Upgrade

Project Update

March 2020



March work

Construction on the Waratah Station Upgrade has progressed well, with upgrades to the station facilities and construction of the lift shaft continuing throughout the month of February.

Construction activities will continue in March and will include:

- building a new station access ramp and retaining walls on Platt Street
- internal fit out of the new accessible station toilets
- floor tiling and installation of new seating in the waiting room
- installation of new services to the station including power, drainage and communications.

Equipment to be used includes excavators, elevated work platforms, concrete trucks, concrete pumps, excavators, power and hand tools.

Weekend work – Saturday 14 and Sunday 15 March

Work will be carried out continuously from **5am Saturday 14 March** until **10pm Sunday 15 March 2020**.

Activities include using a large mobile crane to:

- install new stairs connecting Platform 1 and the permanent footbridge
- remove the temporary footbridge connecting the platforms
- install lift shaft canopies and screens to all lifts.

Other work will include the installation of electrical services.

Equipment to be used includes large mobile cranes, truck mounted cranes, delivery trucks, elevated work platforms, excavators, power and hand tools.

For more information call 1800 684 490.

Email projects@transport.nsw.gov.au or visit www.transport.nsw.gov.au/waratah.

For urgent enquiries or complaints regarding construction activities, please call 24 hours 1800 775 465

This work will coincide with a scheduled trackwork weekend when **train services will not operate**.

For information about rail replacement buses during trackwork, please visit **transportnsw.info** or phone **131 500**.

The construction equipment will be positioned as far away from residential areas as possible with regular respite periods during noisy work.

Pedestrian and traffic detours

To safely operate a large mobile crane, temporary traffic and pedestrian access changes will be in place during the work.

There will be one lane (westbound) temporarily closed on Railway Terrace while the crane operates from 5am Saturday 14 March until 10pm Sunday 15 March 2020. Please allow extra travel time. Traffic control and signage will be used to help pedestrians and motorists with the temporary changes.

The **pedestrian footbridge will be temporarily closed from 5am Saturday 14 March until 10pm Sunday 15 March** to create a safe work zone. A pedestrian detour will be in place via Railway Terrace and Platt Street.

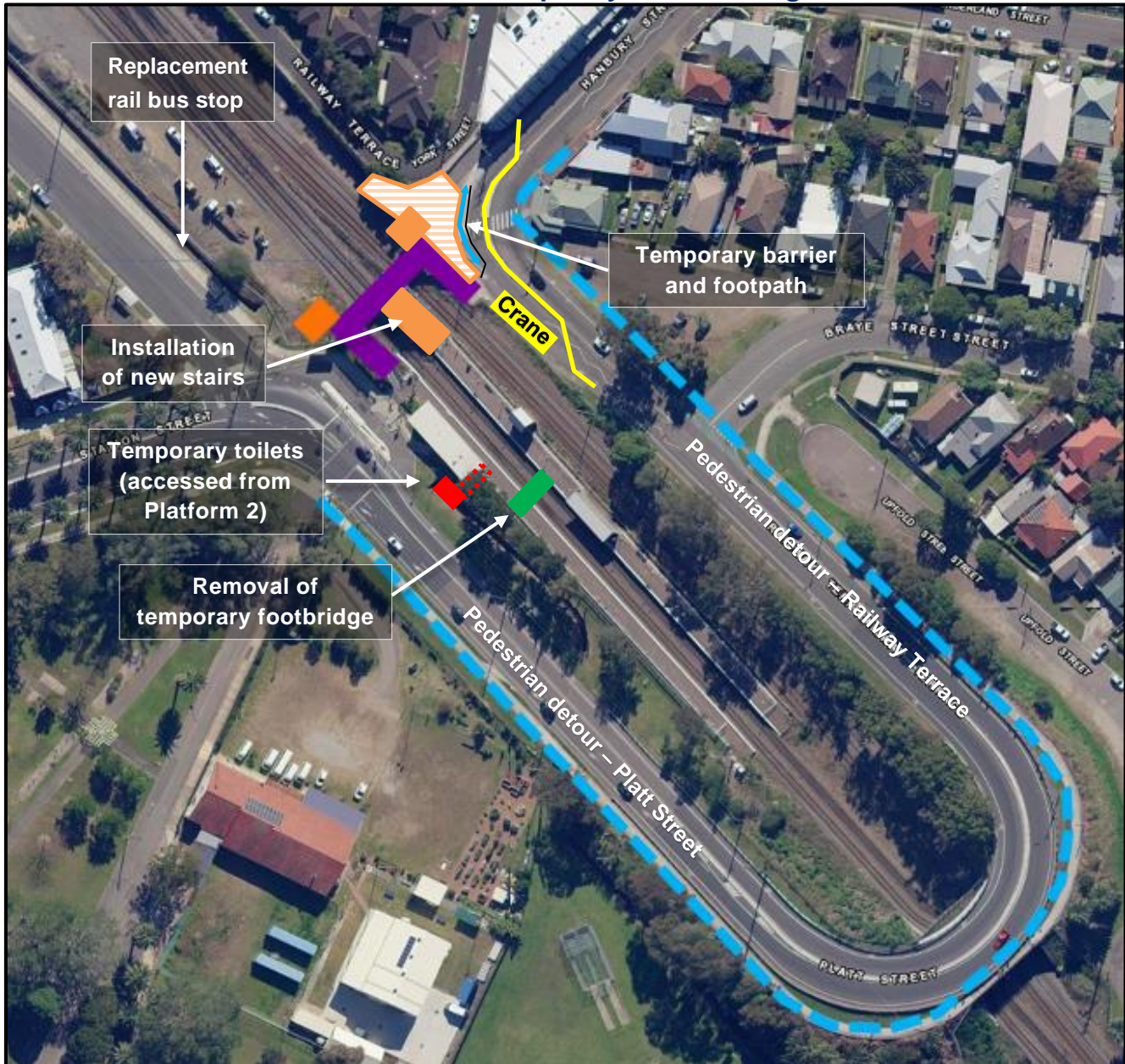
Rail replacement buses will operate from Platt Street. See the map overleaf for more information.

For more information call **1800 684 490**.

Email projects@transport.nsw.gov.au or visit www.transport.nsw.gov.au/waratah

For urgent enquiries or complaints regarding construction activities, please call 24 hours **1800 775 465**

Weekend work 14 and 15 March 2020 – temporary access changes



Map legend:

- Railway Terrace lift shaft construction
- Three lifts under construction
- Waratah Station pedestrian footbridge. **Temporarily closed 5am Saturday 14 March to 10pm Sunday 15 March** – detour via Railway Terrace and Platt Street
- Waratah Station temporary footbridge to Platform 1 – **to be removed from 14 March**
- Mobile crane work zone and temporary lane closure on Railway Terrace
- Temporary station toilets located on Platform 2
- Pedestrian detour via Railway Terrace and Platt Street when pedestrian footbridge temporarily closed.

Toilet and waiting room closure

The existing toilets and waiting room on Platform 2 remain closed for refurbishment but are expected to re-open in April 2020. Two temporary unisex toilets are located on Platform 2 at the rear of the existing building.

Standard construction hours

Work will be carried out during standard construction hours, **7am to 6pm, Monday to Friday**, and **8am to 1pm, Saturday**. We will notify nearby residents and businesses in advance if we need to work outside these times.

Keeping the community informed

The community will be kept informed with regular project notifications and information via the project website found at: transport.nsw.gov.au/waratah.

For further information on the project, please call the Project Infoline on **1800 684 490** or email projects@transport.nsw.gov.au.

For all urgent enquiries or complaints regarding construction activities, please call our 24-hour Construction Response Line on **1800 775 465**.

Arabic

تتضمن هذه الوثيقة معلومات عن مشاريع النقل العام في منطقتكم. إذا كنتم بحاجة إلى خدمات مترجم، الرجاء الإتصال بخدمة الترجمة الشفهية والخطية على رقم 131 450 واطلبوا منهم ان يتصلوا بمصلحة المواصلات في نيو ساوث ويلز على رقم (02) 9200 0200. عندها يساعدهم المترجم بالترجمة.

Filipino

Ang dokumentong ito ay naglalaman ng mahalagang impormasyon tungkol sa mga proyektong transportasyon na pampubliko sa inyong lugar. Kung kailangan ninyo ng serbisyo ng tagapagpaliwanag, makipag-ugnayan po sa Serbisyo ng Pagsasalin at Pagpapaliwanag sa 131 450 at hilingan silang tawagan ang Transportasyon para sa NSW sa (02) 9200 0200. Tutulungan kayo ng tagapagpaliwanag sa pagsasalin.

Hindi

इस दस्तावेज में आपके इलाके के सावजनिक परिवहन परियोजनाओं के बारे में महत्वपूर्ण जानकारी सम्मिलित है। यदि आपको दुर्भाषण की सेवा की आवश्यकता है तो कृपया 131 450 पर टैलेफोन टुंग एंड इटर्स टुंग सर्विस से संपर्क कर और उनसे (02) 9200 0200 पर टैलेफोन पराजोक् स को फोन करने के लिए कहें। उसके बाद दुर्भाषण आपको अनुवाद करने में सहायता देंगे।

Tagalog

Ang dokumentong ito ay naglalaman ng mga mahahalagang impormasyon tungkol sa mga proyekto sa pampublikong transportasyon ng inyong lugar. Kung kayo ay nangangailangan ng serbisyo ng isang interpreter, tawagan po lamang ang Translating and Interpreting Service sa 131 450 at pakiusapan silang tumawag sa "Transport for NSW" sa (02) 9200 0200. Ang interpreter ay tutulungan kayo sa pagsasalin-wika.



This document contains important information about public transport projects in your area. If you require the services of an interpreter, please contact the Translating and Interpreting Service on **131 450** and ask them to call Transport for NSW on **(02) 9200 0200**. The interpreter will then assist you with translation.

For more information call **1800 684 490**.
Email projects@transport.nsw.gov.au or visit www.transport.nsw.gov.au/waratah
For urgent enquiries or complaints regarding construction activities, please call 24 hours **1800 775 465**