

Transport Access Program

Warrabee Station Upgrade

Project update

March 2020

The NSW Government is improving accessibility at Warrabee Station. This upgrade will be delivered as part of the Transport Access Program, an initiative to provide a better experience for public transport customers by delivering modern, safe and accessible infrastructure.

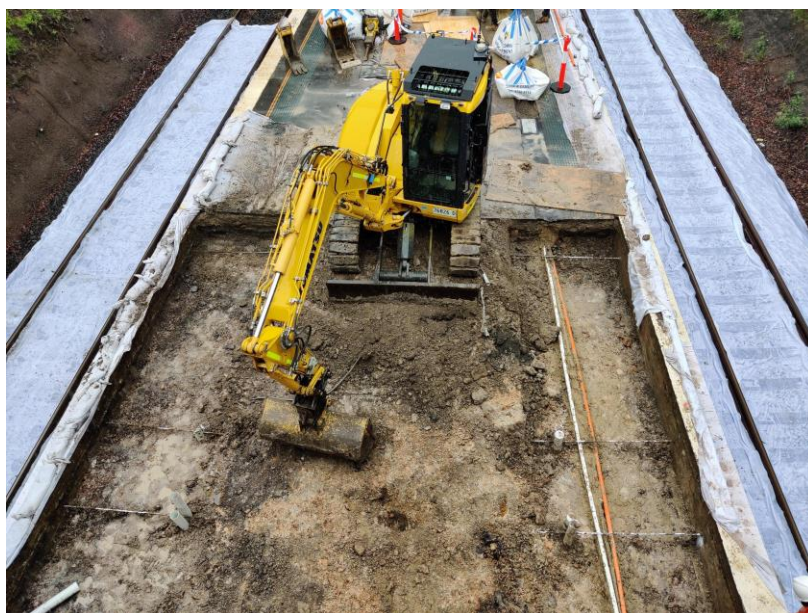
Work commenced in November 2019 and construction is expected to be completed by the end of 2020.

Project overview

The Warrabee Station Upgrade aims to provide a station precinct that is accessible to people with a disability, limited mobility, parents with prams and customers with luggage.

Key features of the upgrade include:

- a new lift between the platform and existing footbridge
- a canopy from the new lift to the station building on the platform
- new accessible parking spaces and a kiss and ride space on Heydon Avenue
- new kiss and ride spaces on Warrabee Avenue
- new accessible pathways through the station precinct
- a new family accessible toilet and unisex ambulant toilet
- a new bike shelter
- improvements to CCTV and lighting to increase safety and security.



Preparation for construction of the new platform lift commenced in February

Upcoming work

Work will continue in March and will include:

- ongoing construction of the new platform lift
- electrical work at the station, including the installation of cable trays
- installation of a temporary toilet block at the north end of the platform
- construction of canopy footings

Work will be carried out during standard construction hours, which are **7am to 6pm Monday to Friday**, and **8am to 1pm Saturday**. We will notify nearby residents and businesses in advance if we need to work outside these times.

Out of hours work

Due to recent wet weather, work outside of normal construction hours is required to complete the installation of a temporary toilet block on the platform. Work will take place on one night between **Monday 2 March** and **Thursday 5 March** between **12am** and **5am**. A small work crew with a mobile crane will lift the temporary toilet block onto the platform.

Access to amenities

While the male and female toilets are converted to the new family accessible toilet and unisex ambulant toilet, temporary toilet facilities will be available at the north end of the platform.

Equipment

Equipment to be used includes, but is not limited to, concrete pumps, concrete saws, excavators, shoring equipment, a crane, hand tools, generators, power tools, delivery vehicles and light vehicles.

Traffic and parking changes

There will be some minor traffic changes along Warrawee and Heydon Avenue during the month of March due to infrastructure deliveries such as materials and concrete.

Traffic control and pedestrian diversions will also be in place as required to assist with traffic changes. Please follow the direction of traffic controllers and allow extra time when planning your trip.

Safety on the platform during construction

While temporary construction barriers are in place, commuters should take extra care on the platform.

Please stay behind the yellow line and walk in single file on the platform to allow a safe distance between yourself and the track.



Keep in touch

The community will be kept informed with regular project notifications and information via the project website: www.transport.nsw.gov.au/warrawee.

For further information on the project, please call the Project Infoline on **1800 684 490** or email **projects@transport.nsw.gov.au**.

For urgent enquiries or complaints regarding construction activities, please call our 24-hour Construction Response Line on **1800 775 465**.

This document contains important information about public transport projects in your area. If you require the services of an interpreter, please contact the Translating and Interpreting Service on **131 450** and ask them to call Transport for NSW on **(02) 9200 0200**. The interpreter will then assist you with translation.

Traditional Chinese

這份文件包含你所在地區公共交通工程項目的重要信息。如果你需要傳譯服務，請致電翻譯與傳譯服務機構，電話 131 450，要求他們為你接通交通工程部 (Transport for NSW)，電話是 (02) 9200 0200。傳譯員會為你做翻譯。

Korean

이 문서는 귀하의 해당 지역에 있는 대중교통 프로젝트에 관한 중요한 정보를 담고 있습니다. 통역사 서비스가 필요하시면 통번역서비스에 131 450 으로 연락하셔서 이들에게 NSW 대중교통 (Transport for NSW)에 (02) 9200 0200 으로 연락하도록 요청하십시오. 그러면 통역사가 번역과 함께 귀하를 도와드릴 것입니다.

Arabic

這份文件包含你所在地區公共交通工程項目的重要信息。如果你需要傳譯服務，請致電翻譯與傳譯服務機構，電話 131 450，要求他們為你接通交通工程部 (Transport for NSW)，電話是 (02) 9200 0200。傳譯員會為你做翻譯。

Spanish

El presente documento contiene información importante sobre proyectos de transporte público en su área. Si requiere los servicios de un intérprete, llame al Translating and Interpreting Service al 131 450 y pídale que llamen a **Transport for NSW**, teléfono: (02) 9200 0200. Luego el intérprete le ayudará con la traducción.