



# Transport Access Program

## Wollstonecraft Station Upgrade

Project Update

July 2020



*Artist's impression of Wollstonecraft Station upgrade, subject to detailed design.*

## Project overview

Transport for NSW is upgrading Wollstonecraft Station to provide a station precinct that is accessible to those with a disability, limited mobility, parents/carers with prams and customers with luggage.

The upgrade is part of the Transport Access Program, a NSW Government initiative to provide a better experience for public transport customers by delivering accessible, modern, secure and integrated transport infrastructure across the state.

Planning approval for the upgrade has been granted. Site establishment work will start this week (details overleaf). Major construction is expected to start in the coming months and take around 18 months to complete.

For more information call **1800 684 490**,

Email [projects@transport.nsw.gov.au](mailto:projects@transport.nsw.gov.au) or visit [transport.nsw.gov.au/wollstonecraft](https://transport.nsw.gov.au/wollstonecraft)

## Upcoming work and site establishment

Site establishment work will start from Saturday 18 July 2020 and will continue in August and September.

Activities will include:

- establishing site arrangements and office set up
- surveying and investigation work
- installing temporary hoarding around the platform
- relocating services from the existing platform canopy
- vegetation removal (subject to approval)

Equipment to be used includes surveying equipment, vacuum trucks, mini loaders, concrete trucks, excavators, cranes and hand tools.

## Construction hours

Standard construction hours are 7am to 6pm Monday to Friday and 8am to 1pm on Saturdays.

For the safety of staff, rail customers and the community, some work will be completed outside standard construction hours. Nearby residents and businesses will be notified before out of hours work takes place.

## Weekend work 18 and 19 July 2020

For the safety of our staff and customers, work will take place during a scheduled Sydney Trains trackwork weekend, when trains don't run and the station is closed.

**The work will be carried out from 6am to 6pm on Saturday 18 and Sunday 19 July 2020.**

The work will include:

- services investigation work including surveying
- delivery of materials
- delivery and installation of concrete barriers and screens.

Traffic control will be in place intermittently on Russell Street and Shirley Road to manage the movement of trucks and material deliveries to the site compound. We appreciate your patience and cooperation following the directions of traffic controllers and signs.

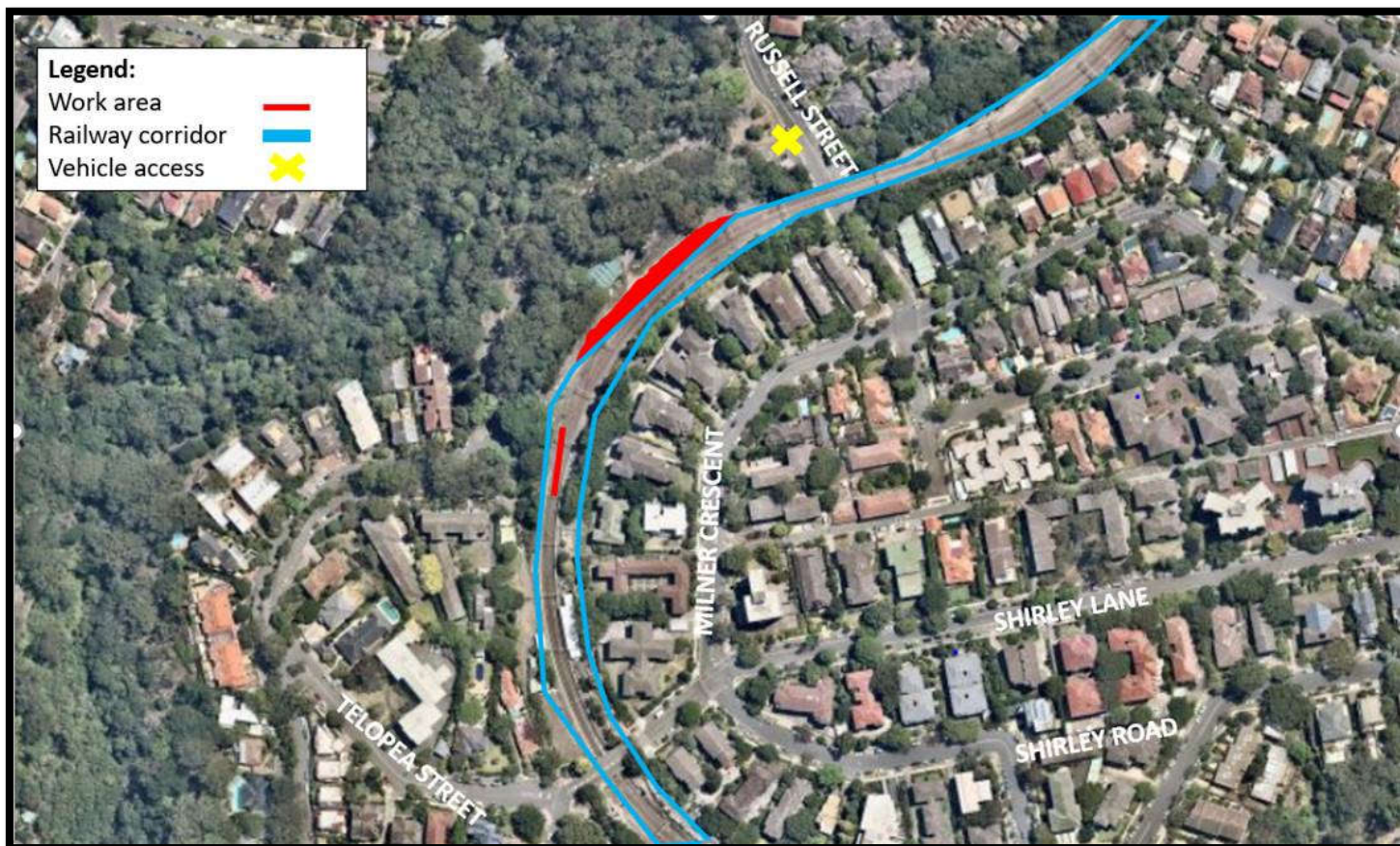
The work will involve a vacuum truck, mini loaders and hand tools.

Please see the map overleaf for the location of work areas.

Wherever possible, measures to reduce noise will be implemented including turning equipment off when not in use, positioning equipment as far away from residences as possible, monitoring noise, using non-tonal reversing beepers and stopping work for respite periods.

Please visit [www.transportnsw.info](http://www.transportnsw.info) or call **131 500** for information about replacement buses during this time.

## Wollstonecraft site establishment map



## Keep in touch

We will continue to keep the community informed with regular project notifications and updates on the project website [www.transport.nsw.gov.au/wollstonecraft](http://www.transport.nsw.gov.au/wollstonecraft).

If you would like to be added to the project distribution list, or for more information on the Wollstonecraft Station Upgrade, please contact us on **1800 684 490** or email [projects@transport.nsw.gov.au](mailto:projects@transport.nsw.gov.au).

For urgent enquiries or complaints regarding construction activities, please call our 24-hour Construction Response Line on **1800 775 465**.



This document contains important information about public transport projects in your area. If you require the services of an interpreter, please contact the Translating and Interpreting Service on **131 450** and ask them to call Transport for NSW on **(02) 9200 0200**. The interpreter will then assist you with translation.

For more information call **1800 684 490**,

Email [projects@transport.nsw.gov.au](mailto:projects@transport.nsw.gov.au) or visit [transport.nsw.gov.au/wollstonecraft](http://transport.nsw.gov.au/wollstonecraft)