

Transport Access Program

Wollstonecraft Station Upgrade

Planning approval



Artist's impression of the Wollstonecraft Station Upgrade, subject to change during detailed design

The NSW Government is improving accessibility at Wollstonecraft Station

Planning approval has been received for the upgrade to Wollstonecraft Station. The approval follows the public display of the Review of Environmental Factors from 18 May to 1 June 2020, and preparation of a Determination Report.

The Determination Report and planning approval conditions are available at www.transport.nsw.gov.au/wollstonecraft.

Transport for NSW received 117 submissions in response to the project's Review of Environmental Factors. We would like to thank the community for their feedback during the planning process.

Moving forward, we will continue to work with North Sydney Council and other key stakeholders to ensure positive urban design outcomes are central to the detailed design process, and that impacts to the community and environment are minimised during construction.

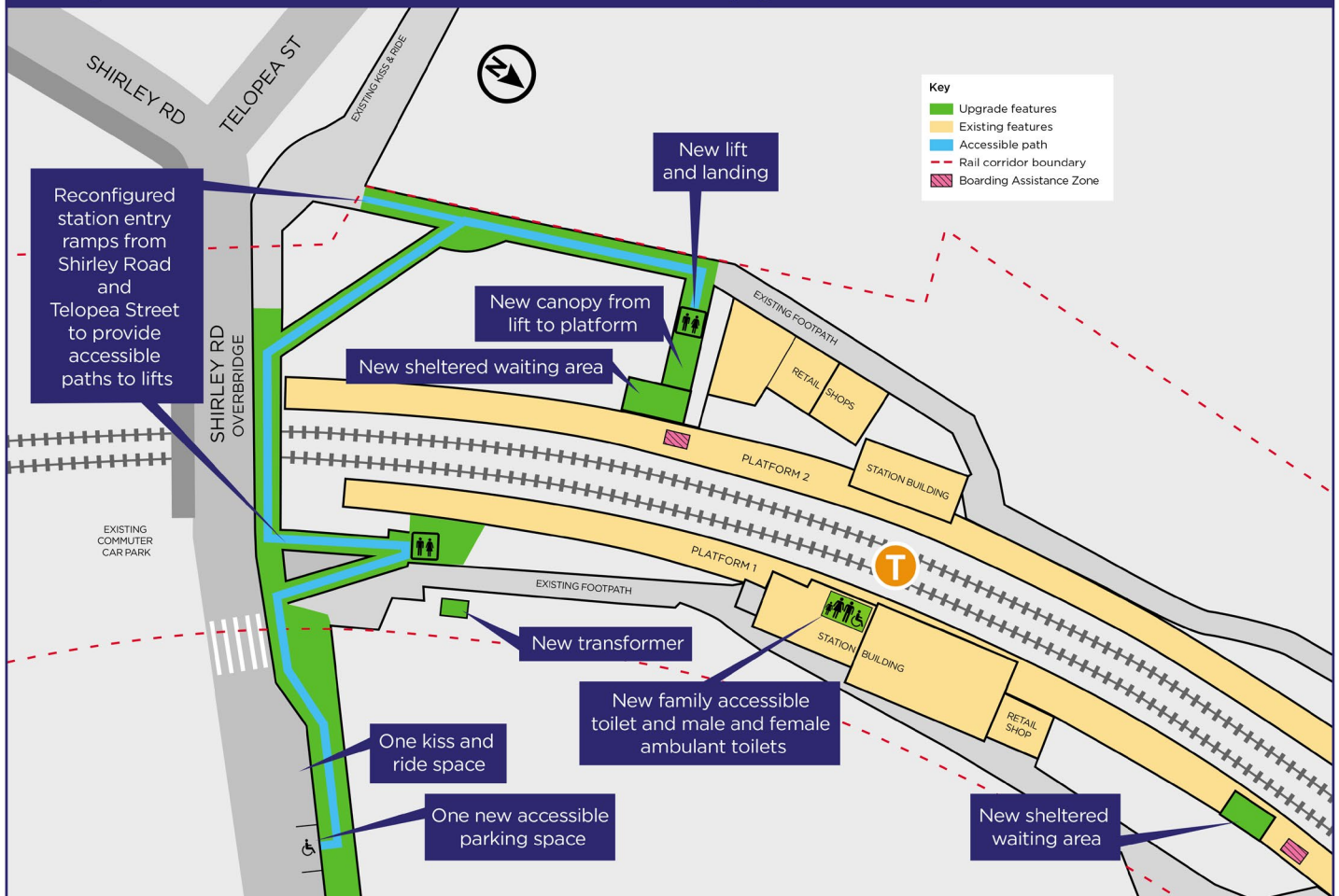
Why accessibility upgrades are needed at Wollstonecraft Station

Wollstonecraft Station does not currently meet the requirements of the federal Disability Standards for Accessible Public Transport 2002 (DSAPT). As an operator of public transport under the Disability Discrimination Act 1992 (DDA), Transport for NSW is required to upgrade the station precinct to ensure equitable access is provided for all customers. The standards set out minimum accessibility requirements for public transport providers and ensure that people with disability have equivalent access to public transport services.

At Wollstonecraft Station, the slope of the current ramps is too steep to meet the DSAPT requirements and is not easily accessible for all customers, including those with additional mobility requirements.

Upgrading the station precinct will make Wollstonecraft accessible to people with limited mobility, parents/carers with prams and customers with luggage.

Key features of Wollstonecraft Station Upgrade



Indicative layout of Wollstonecraft Station Upgrade (subject to detailed design)

Why lifts are the preferred option

As part of the project's design development process, a number of options were explored to address the station's accessibility requirements, including upgrading the existing ramp and underpass.

For Platform 2, the elevation difference between the platform and Shirley Road means that to meet legislative compliance, a new ramp would require the introduction of a switch-back configuration and stairs to an area serviced by the existing path.

To accommodate a compliant ramp, the new infrastructure would be located in what is currently the grassed area, creating potential privacy and light spill issues for neighbouring properties, as well as

introducing a significant ramp structure to what is now a pleasant green space.

A compliant ramp would also be around 84 metres long, which increases the distance mobility impaired customers need to travel to get to and from the platform.

In the case of Platform 1, the gradient is too steep between Shirley Road and the platform entrance to construct a compliant ramp. Consequently, new or regraded ramps could not be accommodated.

Lifts were identified as the preferred option, given their ability to meet the requirements of the legislation while minimising the impact to the station precinct as much as practicable.

Further information about the feedback received during the public display period and how it was considered can be found in the project's Determination Report at www.transport.nsw.gov.au/wollstonecraft



Next steps

Construction on the Wollstonecraft Station Upgrade is expected to commence in late 2020 and take up to 18 months to complete.

Development of an initial concept design for the project.



Review of Environmental Factors prepared for public display and community feedback.



Transport for NSW reviews and responds to feedback from the community within a Determination Report.



**We are
here**

Determination made whether project proceeds or not, detailing any changes to be made to the project scope.



Construction commences.

Why upgrade Wollstonecraft Station now?

The platforms at Wollstonecraft Station are nearing the end of their lifespan and require upgrade work.

To minimise the impact of ongoing construction on customers and the surrounding community, the platform strengthening work will be completed at the same time as the accessibility upgrade.

This work also includes bringing the platform level closer to the level of the train carriages, improving access between train carriages and the platforms.

By combining the two packages of work, construction at the station will be reduced from more than three years to approximately 18 months.

Transport Access Program

This project is being delivered as part of the Transport Access Program, a NSW Government initiative to provide a better experience for public transport customers by delivering accessible, modern, secure and integrated transport infrastructure.



Artist's impression of the proposed Wollstonecraft Station Upgrade, subject to change during detailed design

Construction Timeframes

Early work for the project including site establishment and survey work will start in the coming weeks.

Major projects in and around the rail corridor like station upgrades are complex and require careful planning.

Preparation work needs to be completed before the new lifts can be installed. This includes service relocation, excavation, piling and platform work and installing new electrical services underneath the tracks.

For the safety of the community and workers, and to minimise disruptions to train services, major

construction activities are completed during scheduled trackwork weekends when trains don't run.

This means the major construction work needed to upgrade a station can only occur during the limited number of trackwork weekends throughout the year.

As a result, station upgrades generally take longer to build than other construction projects outside the rail corridor.

Thank you for your patience as we work towards delivering this important project.



This document contains important information about public transport projects in your area. If you require the services of an interpreter, please contact the Translating and Interpreting Service on **131 450** and ask them to call Transport for NSW on **(02) 9200 0200**. The interpreter will then assist you with translation.

Japanese

本文書には貴方のお住まいの地域の公共交通機関プロジェクトに関する重要なお知らせが含まれています。通訳サービスが必要な場合は、翻訳・通訳サービス（Translating and Interpreting Service）131 450 までお電話いただき、NSW 交通局（Transport for NSW）(02) 9200 0200 宛にお電話するようお願いいたします。通訳者が通訳のお手伝いをいたします。

Chinese

这份文件包含你所在地区公共交通工程项目的重要信息。如果你需要传译服务，请致电翻译与传译服务机构，电话 131 450，要求他们为你接通交通工程部(Transport for NSW)，电话是（02）9200 0200。传译员会为你做翻译。

For more information call 1800 684 490

Email projects@transport.nsw.gov.au or visit transport.nsw.gov.au/wollstonecraft

