



# Transport Access Program

## Wollstonecraft Station Upgrade

Project update

October 2020



*Artist's impression of Wollstonecraft Station Upgrade, subject to detailed design.*

Transport for NSW is upgrading Wollstonecraft Station to make it easier for everyone to access, including people with a disability or limited mobility, parents/carers with prams, and customers with luggage.

## Upcoming work

Work will continue in October and includes:

- ongoing survey and investigation work
- installing temporary hoarding around the lift pit on platforms 1 and 2
- installing hoarding and creating a materials storage area on the grassed area beside platform 2
- removing vegetation to enable access for construction
- excavation of lift pits and installation of footings for the bridge

For more information call **1800 684 490**,

Email [projects@transport.nsw.gov.au](mailto:projects@transport.nsw.gov.au) or visit [transport.nsw.gov.au/Wollstonecraft](https://transport.nsw.gov.au/Wollstonecraft)

For urgent enquiries or complaints regarding construction activities, please call 24 hours **1800 775 465**.

Equipment to be used includes surveying equipment, vacuum trucks, mini loaders, excavators, cranes and hand tools. Traffic control will be in place intermittently to ensure safe pedestrian and vehicle movements around the worksite. Some on street parking may be used by trucks where required to carry out the work.

## Night work, Thursday 8 October 2020

For the safety of the community, customers and our workers, work will take place at night from **6pm Thursday 8 October to 7am Friday 9 October**, weather permitting. Some of this work will take place in the rail corridor and needs to be carried out during a scheduled Sydney Trains track work period when trains aren't running.

Work will include wall testing, surveying and service locating. Equipment to be used includes surveying equipment, hand tools and head torches.

This work is not expected to be noisy. We apologise for the inconvenience and will minimise impacts by turning off vehicles and equipment when not in use, monitoring noise, using non-tonal reversing beepers and acoustic barriers.

## Weekend work in October 2020

For the safety of our workers, pedestrians and motorists, work will take place continuously on **two weekends** in October:

- **6pm Friday 16 October to 7am Monday 19 October**, and
- **6pm Friday 23 October to 6pm Sunday 25 October**.

Some of this work will take place in the rail corridor and needs to be carried out during a scheduled Sydney Trains track work period when trains aren't running.

Work will include:

- Delivering and placing ballast to create a stable pad for rail equipment
- Relocation of services
- Tree removal and mulching activities at the southern end of platform 1 and 2
- Tree removal on platform 2 near Shirley Road Bridge
- Hoarding installation on platform 1
- Rock cutting, shotcrete work and lift pit excavation
- Drainage and utility work
- Concrete pouring and pumping
- Excavating and piling work.

Equipment to be used includes excavators, generators, concrete pumps, dump trucks, rollers, lighting towers, chainsaws, a mulcher, hand tools and concrete vibrators.

This work will be noisy at times. Wherever possible measures to reduce noise will be implemented including scheduling noisy work during daytime hours, turning off vehicles and equipment when not in use, monitoring noise, using non-tonal reversing beepers and acoustic barriers.

We apologise for the inconvenience and thank you for your patience during this important work.

Please visit [www.transportnsw.info](http://www.transportnsw.info) or call **131 500** for up to date information regarding service updates and replacement buses during this time.

## Traffic, pedestrian and parking changes

There will be temporary impacts to traffic, parking and pedestrian movements around the station while weekend work is carried out from 6pm Friday 16 October to 7am Monday 19 October and 6pm Friday 23 October to 6pm Sunday 25 October 2020.

The **traffic changes** will include:

A temporary lane closure from Telopea Street over the Shirley Road bridge to Belmont Avenue. Traffic control will be in place to assist motorists.

From 4pm Saturday 17 October to 10am Sunday 18 October and from 4pm Saturday 24 October to 10am Sunday 25 October, the bus stop on Milner Crescent near Shirley Lane will be relocated 20m north.

A concrete truck will be parked on Milner Crescent in front of Shirley Lane. Traffic control will be in place to assist motorists. Pedestrian access along Milner Crescent will be maintained.

The **pedestrian changes** will include:

Pedestrian access to the station will be closed from Shirley Road from both entries, however shop access will be maintained at all times.

Shirley Lane at Milner Crescent will be closed. Resident access will be maintained at all times. Traffic control will be in place to assist pedestrians.

The **parking changes** will include:

Two parking spaces on Milray Avenue, three parking spaces on Milner Crescent and three parking spaces on Shirley Road will be temporarily closed on all 4 days, please see map for details below.

Please allow extra travel time and follow the instructions of traffic control staff and signage while this work is carried out. Please see the maps overleaf outlining these impacts and detours.

## Vegetation removal

During weekend work in October, tree removal will take place within the station precinct. The proposal to remove trees is in line with the planning approval received for the project and is essential in order to build the new lifts and station upgrades. Please see map below for more information about the trees and vegetation that need to be removed. The project will plant new trees and vegetation in accordance with the *TfNSW Vegetation Offset Guide*.

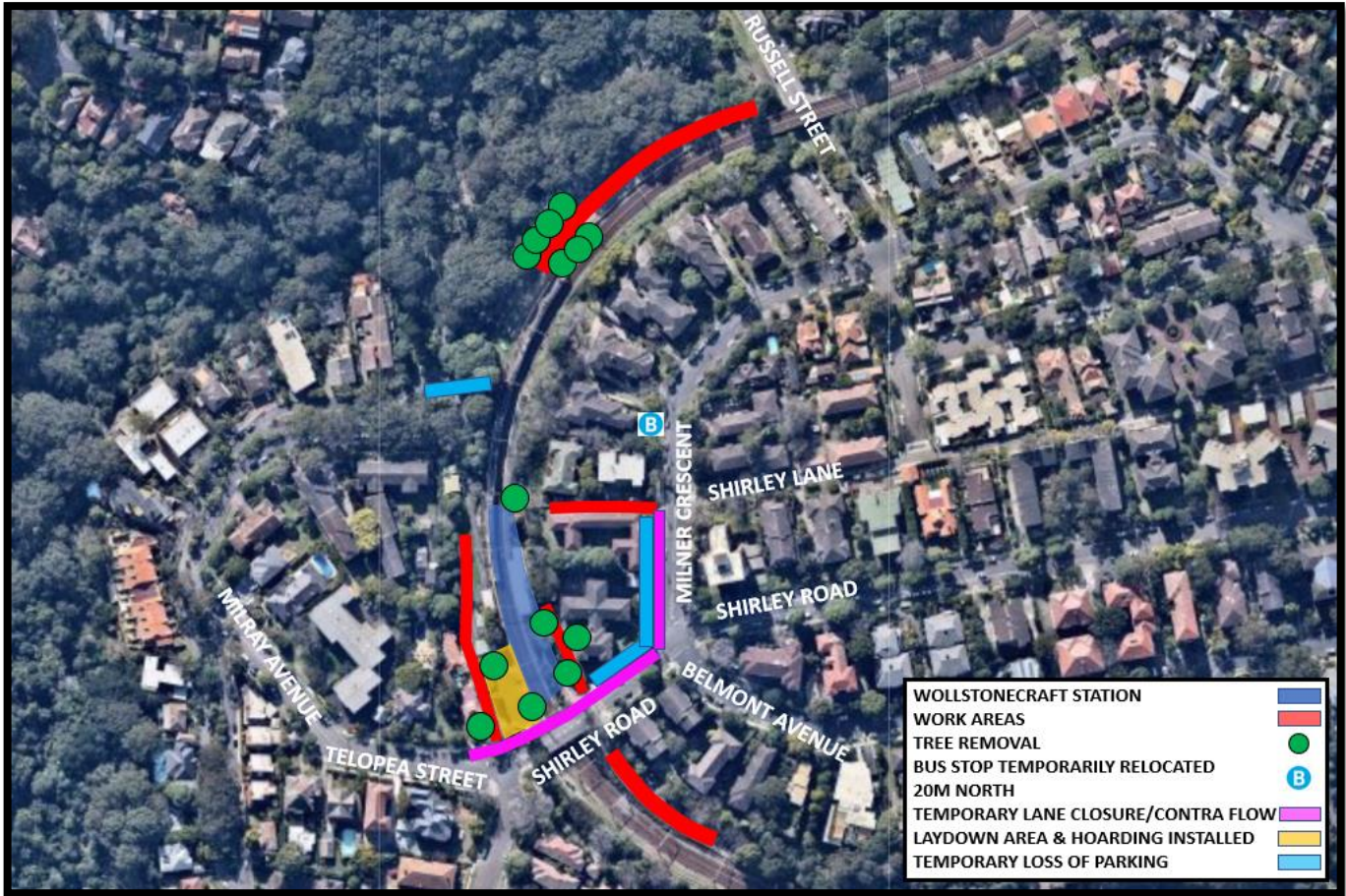
Every effort will be made to maintain vegetation where possible.

## Construction hours

Standard construction hours are **7am to 6pm Monday to Friday** and **8am to 1pm on Saturdays**.

For the safety of staff, rail customers and the community, some work will be completed outside standard construction hours. Nearby residents and businesses will be notified before any work outside these hours takes place.

## Map of work locations, traffic, pedestrian and parking changes



### Keep in touch

We will continue to keep the community informed with regular project notifications and updates on the project website [www.transport.nsw.gov.au/wollstonecraft](http://www.transport.nsw.gov.au/wollstonecraft).

If you would like to be added to the project distribution list, or for more information on the Wollstonecraft Station Upgrade, please contact us on **1800 684 490** or email [projects@transport.nsw.gov.au](mailto:projects@transport.nsw.gov.au).

For urgent enquiries or complaints regarding construction activities, please call our 24-hour Construction Response Line on **1800 775 465**.



This document contains important information about public transport projects in your area. If you require the services of an interpreter, please contact the Translating and Interpreting Service on **131 450** and ask them to call Transport for NSW on **(02) 9200 0200**. The interpreter will then assist you with translation.

For more information call **1800 684 490**,  
Email [projects@transport.nsw.gov.au](mailto:projects@transport.nsw.gov.au) or visit [transport.nsw.gov.au/Wollstonecraft](http://transport.nsw.gov.au/Wollstonecraft)  
For urgent enquiries or complaints regarding construction activities, please call 24 hours **1800 775 465**.