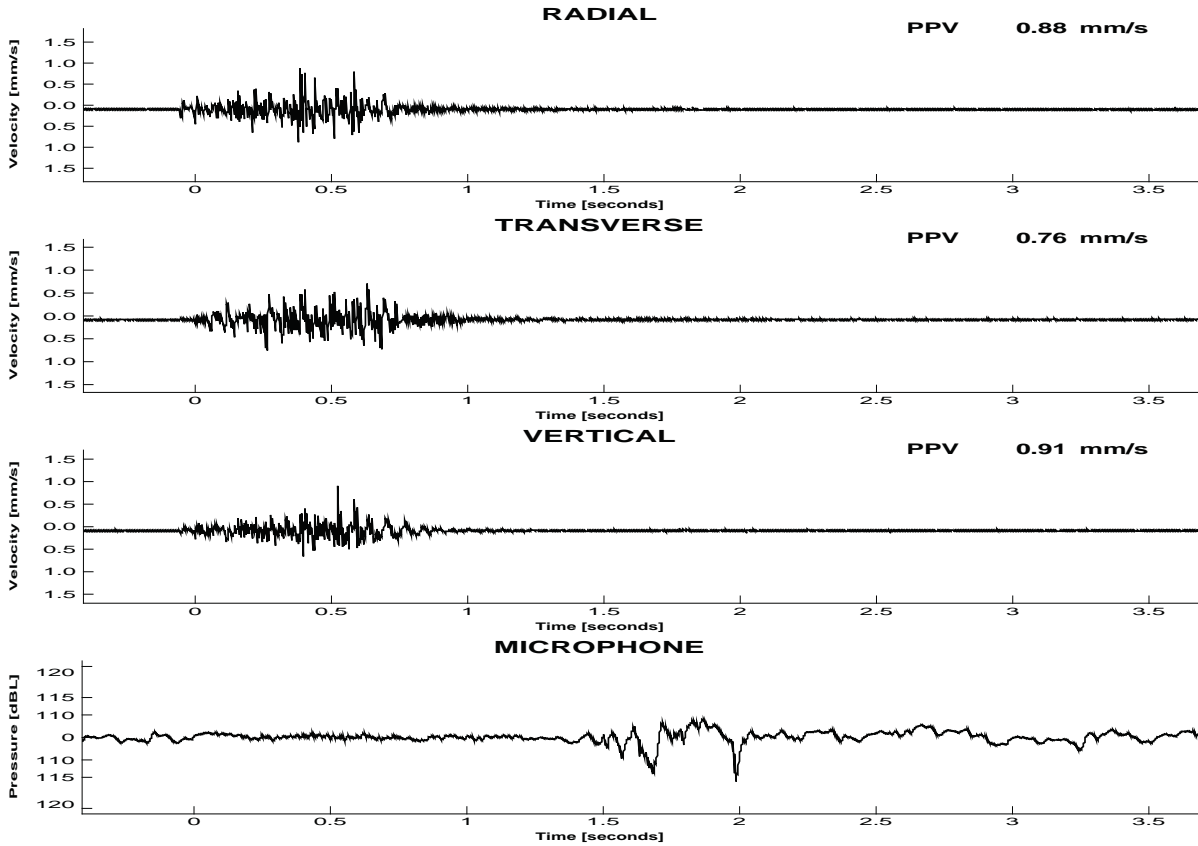


Sydney Trains Bombo Quarry

Location: EPA Stn 'A'
 Triggered by : Vector Sum

Date: 2020-03-23
 Time: 11:27:52

Triggers Set : Vector Sum: 0.50mm/s, Channels 1-3: 0.50mm/s



BLAST RESULTS

Peak Vector Sum Velocity : 1.01 mm/s at 0.510 s
 Peak Overpressure : 115.9 dB at 1.985 s

	Peak [mm/s]	Frequency (ZC at Peak) [Hz]	Time (Rel. to Trigger) [s]	Acceleration (Est. from PPV) [mm/s ²]	Displacement (Est. from PPV) [mm]
Radial	0.88	55.9	0.386	147	3.9
Transverse	0.76	49.4	0.262	137	3.8
Vertical	0.91	133.3	0.522	467	1.7

TM Serial Number : 4421

Last Calibration: 2019-05-16