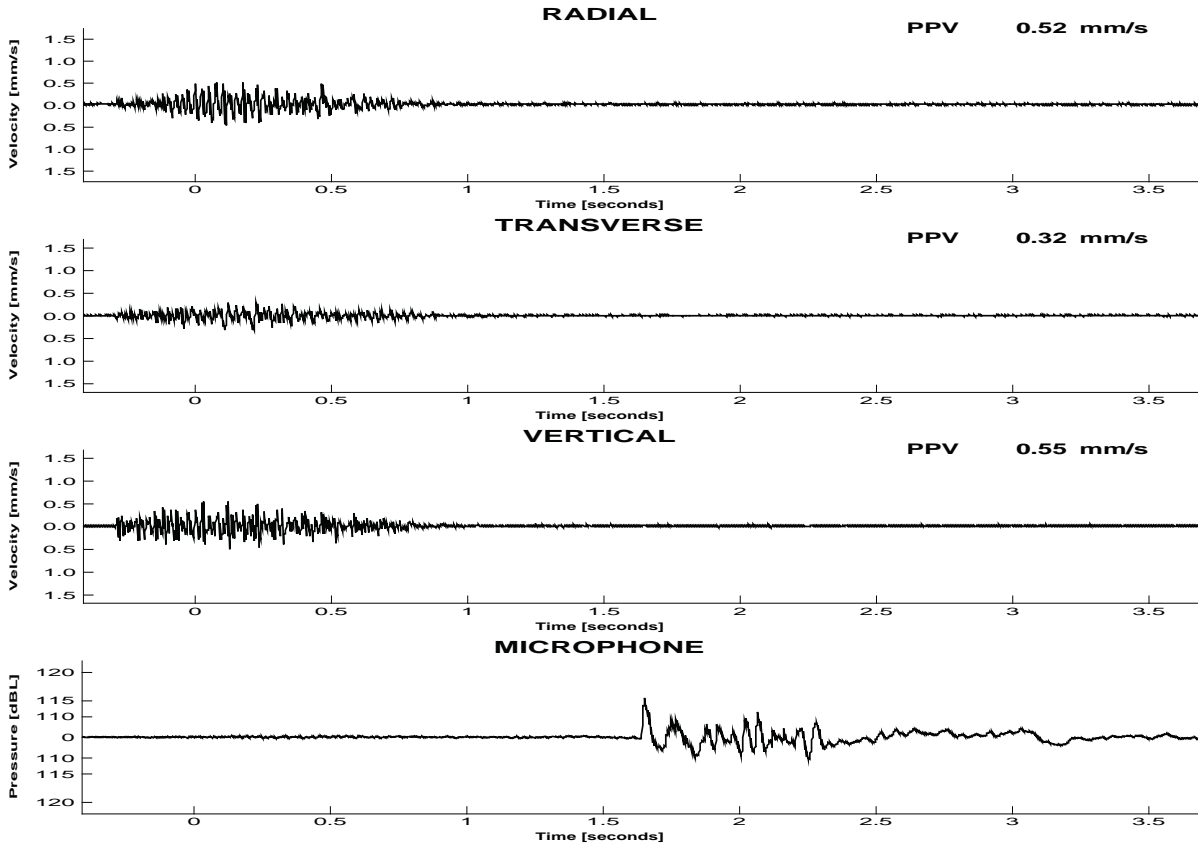


Sydney Trains Bombo Quarry

Location: EPA Stn 'C'
 Triggered by : Vector Sum

Date: 2020-04-30
 Time: 11:01:38

Triggers Set : Vector Sum: 0.50mm/s, Channels 1-3: 0.50mm/s



BLAST RESULTS

Peak Vector Sum Velocity : 0.70 mm/s at 0.226 s
 Peak Overpressure : 115.7 dB at 1.649 s

	Peak [mm/s]	Frequency (ZC at Peak) [Hz]	Time (Rel. to Trigger) [s]	Acceleration (Est. from PPV) [mm/s ²]	Displacement (Est. from PPV) [mm]
Radial	0.52	36.7	0.077	68	3.5
Transverse	0.32	27.8	0.108	35	2.9
Vertical	0.55	43.7	0.028	69	3.2

TM Serial Number : 4420

Last Calibration: 2020-04-23