

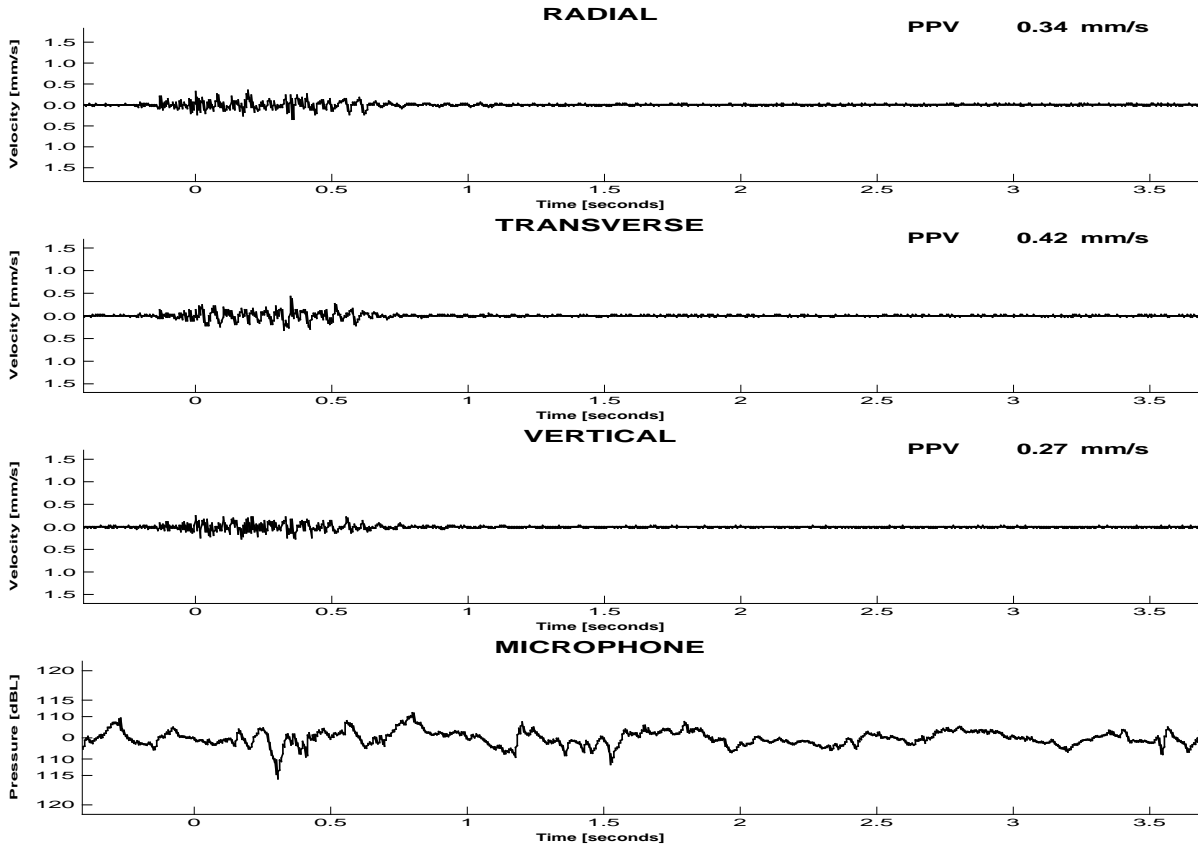
**Blast # 989**

# Bombo Quarry

Location: **Stn A (East)**  
Triggered by : **Vector Sum**

Date: **2020-10-21**  
Time: **11:35:32**

Triggers Set : Vector Sum: 0.28mm/s, Channels 1-3: 0.27mm/s



## RESULTS

Peak Vector Sum Velocity : **0.48 mm/s** at **0.351 s**  
Peak Overpressure : **115.7 dBL** at **0.305 s**

	Peak [mm/s]	Frequency (ZC at Peak) [Hz]	Time (Rel. to Trigger) [s]	Acceleration (Est. from PPV) [mm/s <sup>2</sup> ]	Displacement (Est. from PPV) [mm]
Radial	0.34	34.5	0.191	69	2.5
Transverse	0.42	43.0	0.351	75	2.5
Vertical	0.27	44.2	0.170	53	1.5

TM Serial Number : **4421**

Last Calibration: **2020-04-23**

Bombo Quarry\M4421 Bombo Quarry @ Stn A (East) @ 2020-10-21 10.35.32.twf  
T-Link 1.2 - ANZEC Standard.rtt

Texcel Monitors comply with Appendix J of AS 2187.2-2006