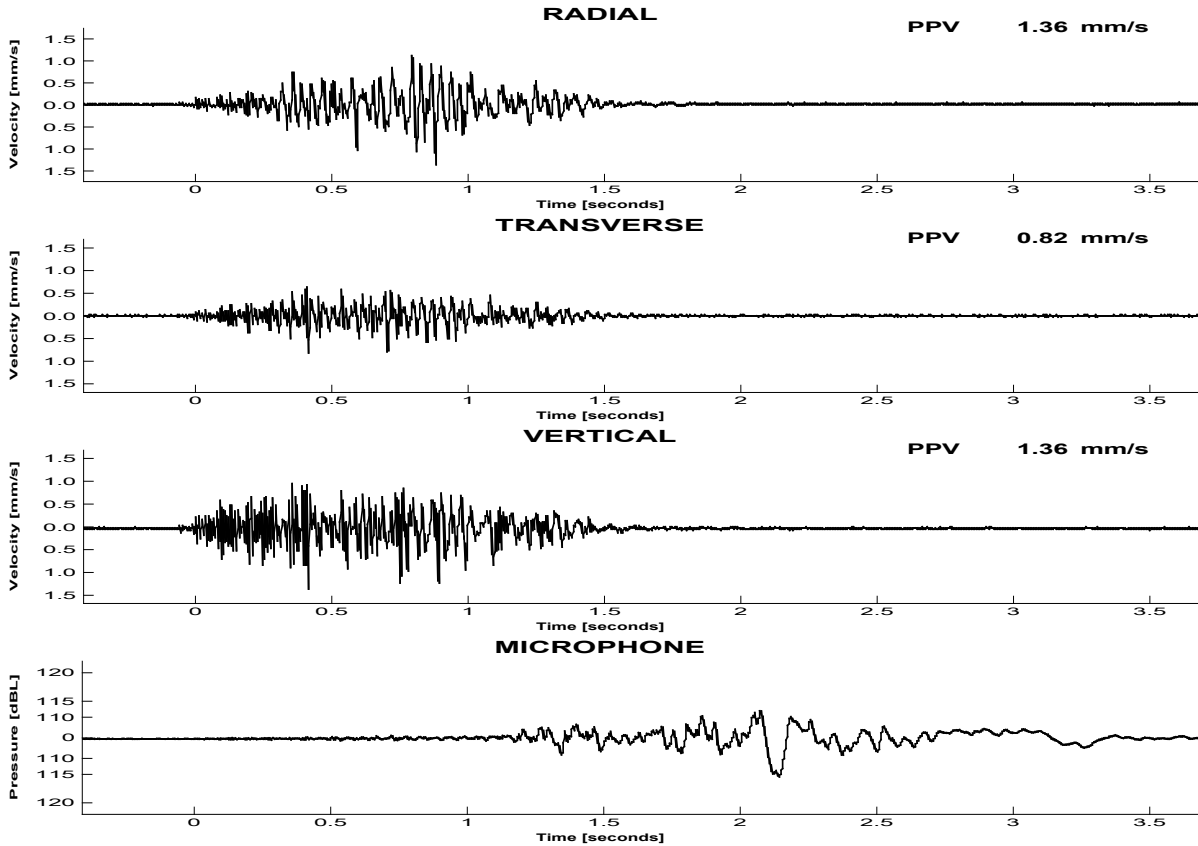


# Bombo Quarry

Location: **Stn C (North)**  
 Triggered by : **Vector Sum**

Date: **2020-11-17**  
 Time: **11:01:18**

Triggers Set : Vector Sum: 0.23mm/s, Channels 1-3: 0.28mm/s



## RESULTS

Peak Vector Sum Velocity : **1.65 mm/s** at **0.414 s**  
 Peak Overpressure : **115.6 dB** at **2.142 s**

	Peak [mm/s]	Frequency (ZC at Peak) [Hz]	Time (Rel. to Trigger) [s]	Acceleration (Est. from PPV) [mm/s <sup>2</sup> ]	Displacement (Est. from PPV) [mm]
Radial	1.36	29.0	0.881	167	11.7
Transverse	0.82	51.3	0.414	175	4.0
Vertical	1.36	57.1	0.413	352	6.0

Monitoring conducted by: .....  
 (Sydney Trains:Stephen Norman)

TM Serial Number : **4420** Last Calibration: **2020-04-23**