



Automatic Train Protection

Lidcombe

COMMUNITY NOTIFICATION

July 2021

Transport for NSW is boosting safety across the electrified rail network by delivering new Automatic Train Protection (ATP) technology.

Project overview

ATP will provide additional safety benefits and more reliable services by ensuring trains operate within the permitted speed limit.

The technology will provide real-time speed and signal information to train drivers. The system includes:

- installation of electronic equipment on rail lines to continually monitor train speed
- installation of electronic equipment on suburban and intercity trains which provides information on the train's speed, distance, and direction.

ATP is being rolled out across the Sydney Trains and NSW TrainLink electrified network.

Upcoming activities at Lidcombe

Between 10pm and 1am Monday 19 and Friday 30 July we will be installing electronic safety equipment in the rail corridor, weather permitting. Work will only take place for a maximum of two nights within the rail corridor.

The work is only expected to occur for short periods to ensure the safety of workers and to avoid interrupting other rail operations.

Workers will access the rail corridor via the nearby rail access gate. Please see map of the work area and access gate overleaf. There will be no traffic impacts because of this work.

What you may notice

Equipment used during the work activity will involve hand tools, including an electric saw and drill. Higher noise generating work involving hand held power tools will only be for short periods.

Transport for NSW is committed to minimising noise impacts on the community. We switch off equipment when it is not being used, place equipment as far away from properties as possible and monitor our work activities to make sure noise levels are being managed effectively.

Keeping the community informed

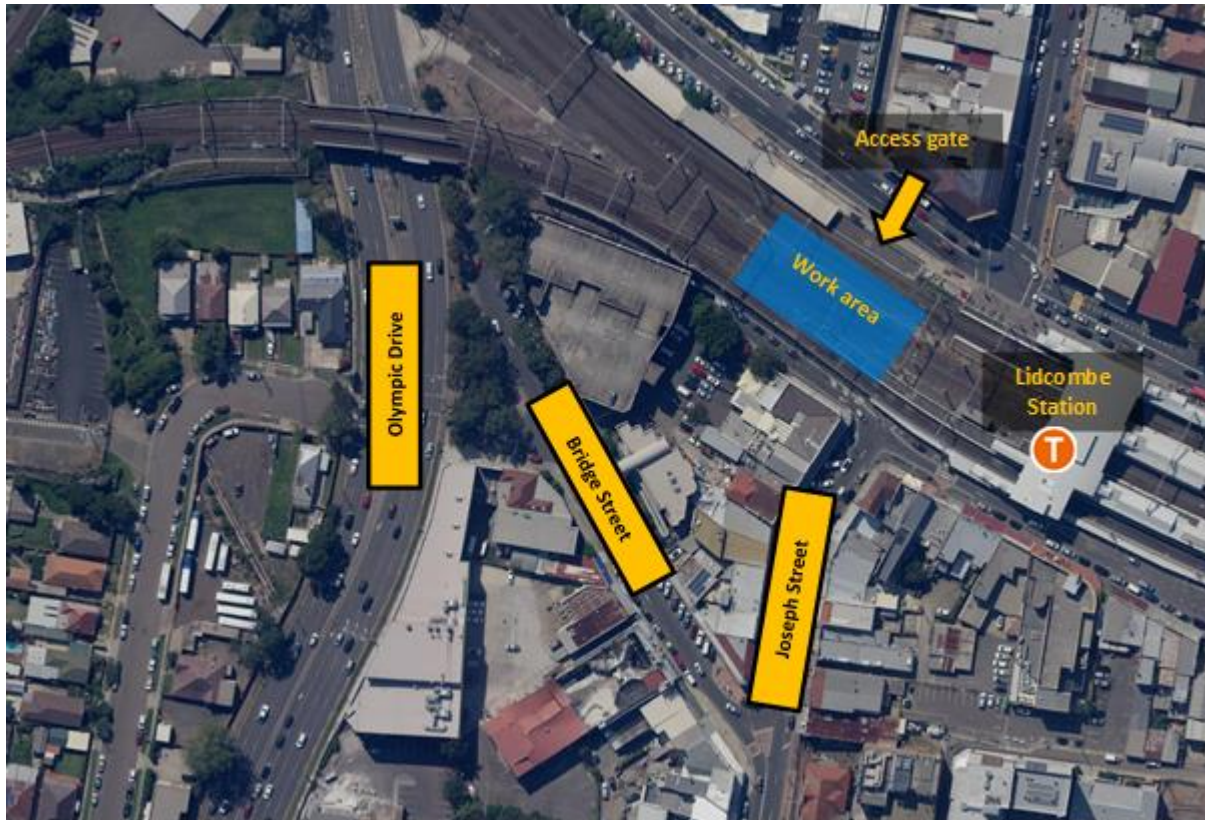
If you would like to speak with the project team about this work, please contact us through the details provided below. Thank you for your patience and understanding during these important safety improvements to the rail network.

For more information call **1800 684 490**,

Email projects@transport.nsw.gov.au or visit transport.nsw.gov.au/projects

For urgent enquiries or complaints regarding construction activities, please call 24 hours **1800 775 465**

Map of the work area



Map highlighting the work area and access location near Lidcombe Railway Station.



This document contains important information about public transport projects in your area. If you require the services of an interpreter, please contact the Translating and Interpreting Service on **131 450** and ask them to call Transport for NSW on **(02) 9200 0200**. The interpreter will then assist you with translation.

For more information call **1800 684 490**,
Email projects@transport.nsw.gov.au or visit transport.nsw.gov.au/projects
For urgent enquiries or complaints regarding construction activities, please call 24 hours **1800 775 465**