

Transport Access Program

East Hills Station Upgrade

Project update

June 2021



Artist's impression of East Hills Station Upgrade, subject to detailed design.

Upcoming work and site establishment

Site establishment is underway, with construction work beginning in June 2021. Activities will include:

- surveying the platform, station buildings and surrounding areas
- installing temporary fencing/hoarding near the future lift locations
- installing a temporary site compound in the grassed area behind platform 3
- vegetation work, including tree trimming and removal
- relocating electrical and water services
- preparation work for the new lifts, including excavation, installing anchor bolts, waterproofing and concreting
- fit out of temporary site office in an existing building on MacLaurin Avenue.

Equipment to be used includes surveying equipment, mobile crane, small drilling rig, excavators, trucks, concrete pumps, power and hand tools.

Weekend work – 19 to 21 June 2021

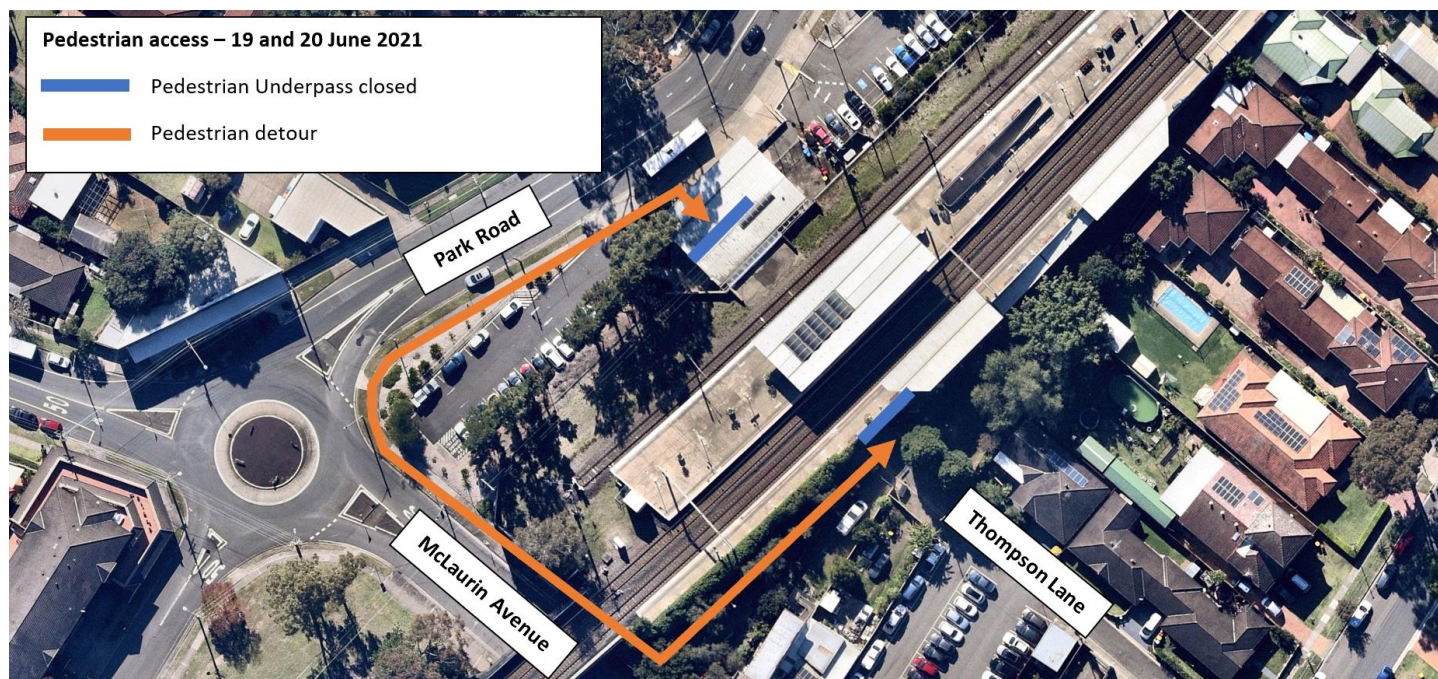
Work will be carried out **continuously from 6am Saturday 19 June to 2am Monday 21 June 2021** during a scheduled Sydney Trains track work weekend, when the station is closed and no trains are running.

For work to be carried out safely, the **pedestrian underpass between Park Road and Thompson Lane will be closed from 6am Saturday 19 June until 6pm Sunday 20 June 2021**. Please use alternative access on Maclaurin Avenue during this time.

Work will include electrical investigations, demolition work, lift pit work, installation of hoardings and the relocation of electrical and water services in the station precinct. Equipment to be used includes mobile cranes, excavators, surveying equipment, construction trucks, power and hand tools.

There may be some noise associated with this work and measures will be implemented to reduce impacts wherever possible, such as turning off vehicles when not in use, positioning construction equipment will be positioned as far away from residential areas as possible, using non-tonal reversing beepers, and monitoring noise levels.

Please visit [transportnsw.info](https://transport.nsw.gov.au) or call **131 500** for information about replacement buses during this time.



Construction hours

Standard construction hours are from 7am to 6pm every day, including public holidays. We understand extending construction hours to include weekends and public holidays may cause disruption, with all efforts made to minimise impacts where possible and ensure strict environmental conditions relating to noise, vibration and dust management are adhered to. We will notify nearby residents and businesses in advance if we need to work outside these times.

Keep in touch

We will continue to keep the community informed with regular project updates. Further information is available on the project website transport.nsw.gov.au/easthills.

If you would like to be added to the project distribution list, or for more information on the East Hills Station Upgrade, please contact us on **1800 684 490** or email projects@transport.nsw.gov.au. For all urgent enquiries or complaints regarding construction activities, please call our 24-hour Construction Response Line on **1800 775 465**.



This document contains important information about public transport projects in your area. If you require the services of an interpreter, please contact the Translating and Interpreting Service on **131 450** and ask them to call Transport for NSW on **1800 684 490**. The interpreter will then assist you with translation.