



# Transport Access Program

## East Hills Station Upgrade

**Project update**

**September 2021**

Construction activities on the East Hills Station Upgrade were recently paused in line with restrictions introduced by the NSW Government to help keep our communities safe. Work recommenced on 16 August 2021.

Should these restrictions change based on advice by the NSW Government, which may impact the timing of our work, the community will be notified. We encourage you to subscribe to our project email distribution for the latest information, by calling us on 1800 684 490 or emailing [projects@transport.nsw.gov.au](mailto:projects@transport.nsw.gov.au).

The safety and wellbeing of our workforce and the wider community is our highest priority. These works are in line with the current Public Health Orders and a COVID-19 Safe plan is in place, including masks and QR codes.

### Upcoming work

Construction on the East Hills Station Upgrade is progressing with preparation works carried out in August. Activities will continue in September, including:

- installation of electrical and water services at the station
- preparation work for the new lifts, including installation of scaffolding, form work and concreting
- demolition and service relocation for the new family accessible toilet, including installation of temporary fencing
- removal of payphone from the underpass
- footpath upgrades in front of the station on Park Road and on the footpath next to the station between Thompson Lane and MacLaurin Avenue.

Equipment to be used includes surveying equipment, mobile crane, excavators, bobcats, trucks, concrete pumps, power and hand tools.

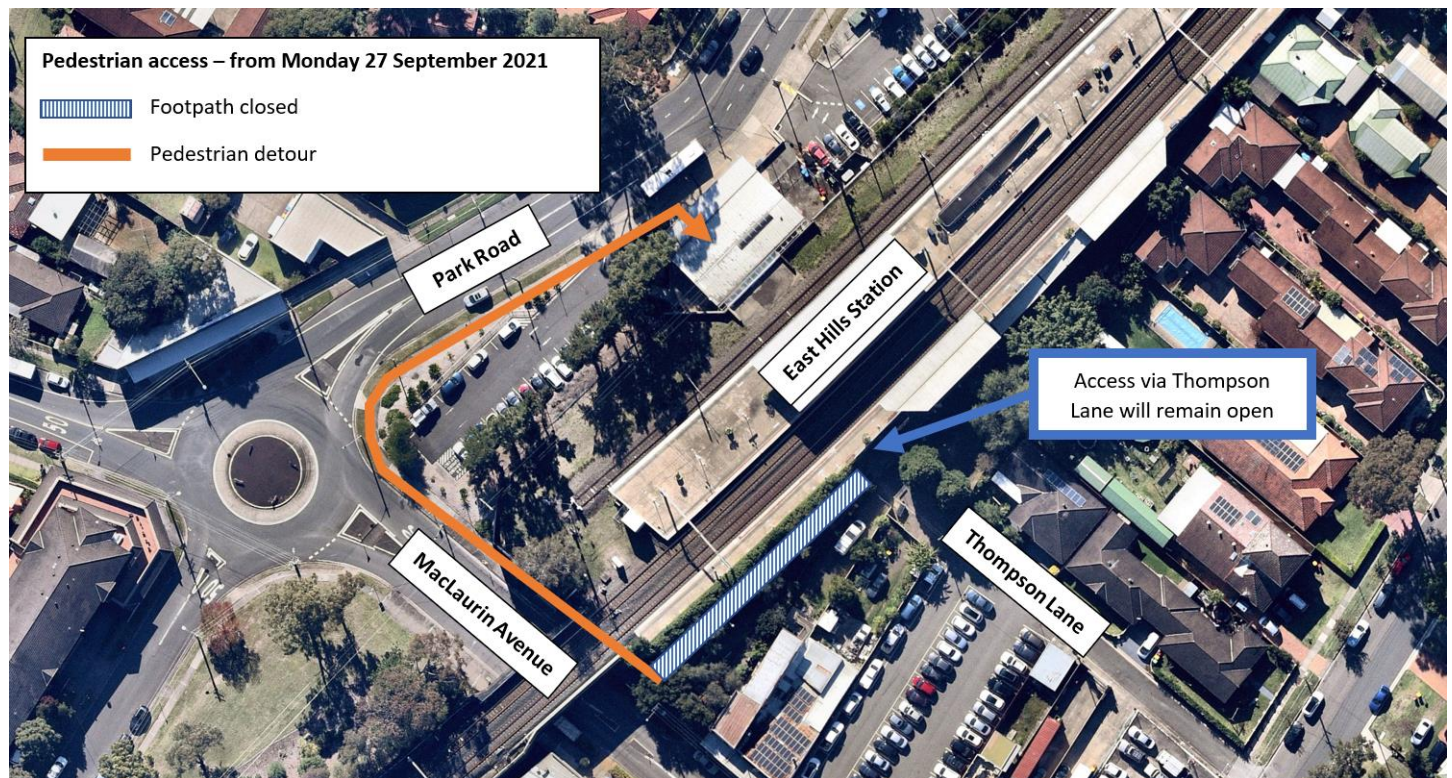
### Footpath upgrades

Work will start in September to upgrade the footpath in front of the station on Park Road and on the footpath next to the station between Thompson Lane and MacLaurin Avenue.

Work this month will include the removal of the existing footpath and demolition work.

To ensure work can be carried out safely, **the footpath between Thompson Lane and MacLaurin Avenue will be temporarily closed from Monday 27 September 2021.** The temporary closure will be in place until the end of the year. Please use alternative access via MacLaurin Avenue or Thompson Lane during this time.

Access to the station will be maintained at all times.



## Construction hours

**Standard construction hours** are from 7am to 6pm every day, including public holidays. We understand extending construction hours to include weekends and public holidays may cause disruption, with all efforts made to minimise impacts where possible and ensure strict environmental conditions relating to noise, vibration and dust management are adhered to. We will notify nearby residents and businesses in advance if we need to work outside these times.

## Keep in touch

We will continue to keep the community informed with regular project updates. Further information is available on the project website **[transport.nsw.gov.au/easthills](https://transport.nsw.gov.au/easthills)**.

If you would like to be added to the project distribution list, or for more information on the East Hills Station Upgrade, please contact us on **1800 684 490** or email **[projects@transport.nsw.gov.au](mailto:projects@transport.nsw.gov.au)**. For all urgent enquiries or complaints regarding construction activities, please call our 24-hour Construction Response Line on **1800 775 465**.



This document contains important information about public transport projects in your area. If you require the services of an interpreter, please contact the Translating and Interpreting Service on **131 450** and ask them to call Transport for NSW on **1800 684 490**. The interpreter will then assist you with translation.