

Commuter Car Park Program

Edmondson Park

Project update

April 2021



Construction progress on the new multi-storey car park at Edmondson Park, March 2021

Transport for NSW is delivering more commuter car parking at Edmondson Park Station to provide you with more convenient access to public transport and reduce congestion on our roads.

The car park located south of the station will have approximately 1,000 additional commuter spaces and is expected to be open to customers in mid-2021.

Progress update

In March, concrete pours for level one and two slabs, walls and columns were completed with the concrete structure progressing to level three and four. Electrical and plumbing installation work is progressing for the new car park. Scaffold installation to levels three and four will also occur.



Upcoming construction work

During April, the following work will occur on the new multi-storey car park:

- Continuation of concrete pours for the suspended concrete slabs for levels three and four
- Construction of load bearing walls and columns
- Construction of stair and lift cores through the building
- Installation of perimeter scaffold on levels three and four
- Plumbing and electrical work

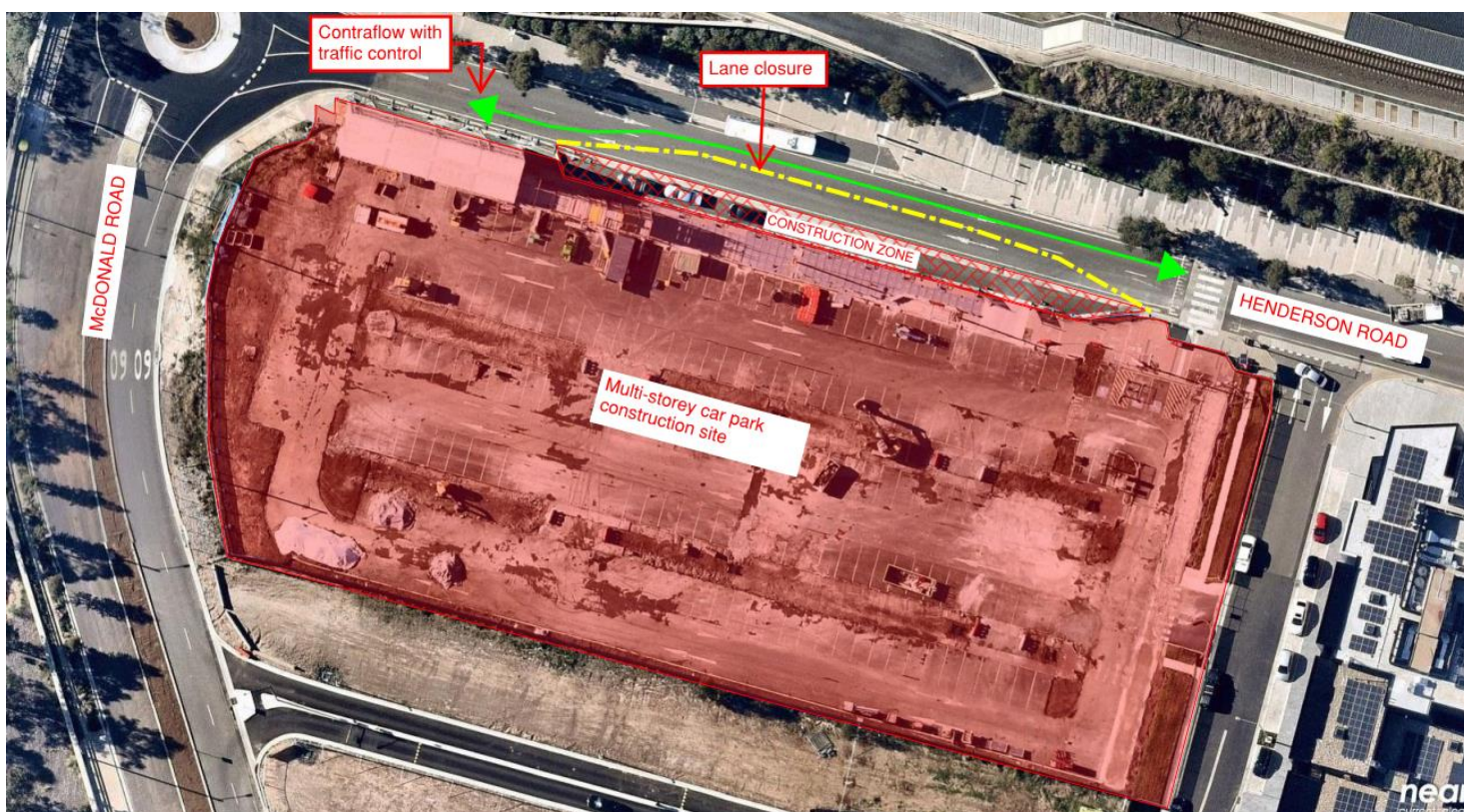
Out of Hours Works

During April, six major concrete pours are planned to occur on site. These six concrete pours will make up the foundations for level four of the multi-storey car park. Whilst the majority of these concrete pours will be undertaken during standard construction hours, finishing work will need to be undertaken out of hours throughout April.

Due to the weather dependant nature of this work, we'll keep our website, www.transport.nsw.gov.au/edmondsonpark updated with the dates the work will be carried out. If you would like to know more about this work please email us at projects@transport.nsw.gov.au or call us on 1800 684 490. There may be some noise impacts associated with these out of hours works but every effort will be made to minimise disruption to local residents. We apologise for any inconvenience caused.

Changes to traffic during major concrete pour days

In order to carry out the concrete pours safely, one lane will be closed on Henderson Road adjacent to the work site (see map) and traffic control and signage will be in place to support motorists and pedestrians with the change in traffic arrangements.



For more information call 1800 684 490

Email projects@transport.nsw.gov.au or visit www.transport.nsw.gov.au/edmondsonpark

For urgent enquiries or complaints regarding construction activities, please call 24 hours 1800 775 465

Update to standard construction hours

To support the industry and continue the delivery of critical infrastructure, the NSW Government introduced new rules in 2020 allowing construction sites to operate extended hours on weekends. These rules have recently been extended until 31 March 2022.

From Saturday 10 April, construction hours on a Saturday will be extended from **7am – 6pm** until project completion.

There will be a break from construction over the Easter long weekend from **Friday 2 April to Monday 5 April**.

Keeping you up to date

We will continue to keep the community informed with regular project updates. More information about the project is available on our website www.transport.nsw.gov.au/edmondsonpark. If you would like to sign up to our project distribution list, please contact us on **1800 684 490** or email projects@transport.nsw.gov.au and we will email you regular updates. For all urgent enquiries or complaints regarding construction activities, please call our **24-hour Construction Response Line** on **1800 775 465**.



This document contains important information about public transport projects in your area. If you require the services of an interpreter, please contact the Translating and Interpreting Service on **131 450** and ask them to call Transport for NSW on **1800 684 490**. The interpreter will then assist you with translation.

For more information call **1800 684 490**

Email projects@transport.nsw.gov.au or visit www.transport.nsw.gov.au/edmondsonpark

For urgent enquiries or complaints regarding construction activities, please call 24 hours **1800 775 465**