

# Commuter Car Park Program

Edmondson Park

Project update

August/September 2021



*Indicative artist's impression of the north and west faces of the façade*

**Transport for NSW is delivering up to 2,000 additional commuter parking spaces for commuters using Edmondson Park Station to provide you with more convenient access to public transport and reduce congestion on our roads.**

The new multi-storey commuter car park, providing up to 1,250 additional parking spaces, to the south of Edmondson Park Station is currently being constructed.

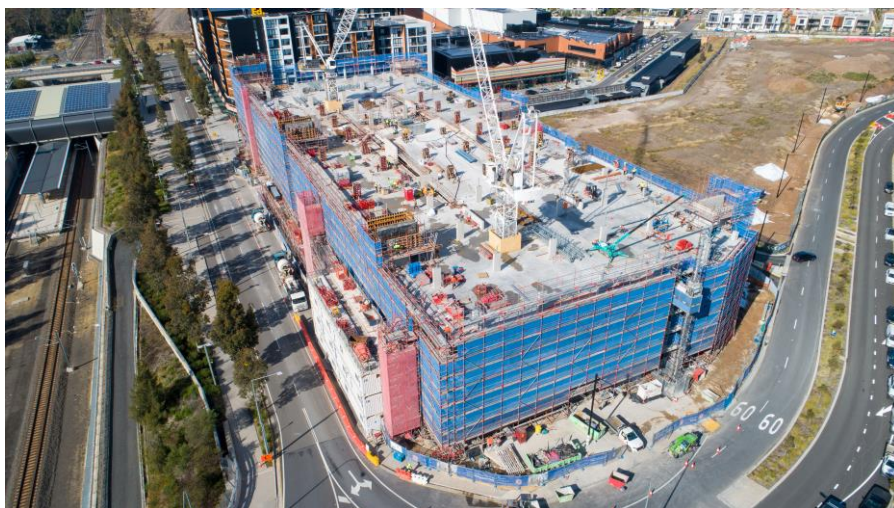
## Project status

Work on the new multi-storey commute car park has restarted. Our work activities are being carried out in line with the current Public Health Orders and a COVID Safe plan is in place. The safety and wellbeing of our workplace and the wider community is our highest priority.

We have started construction on the fifth level, which will deliver a further much needed 250 commuter parking spaces in the new multi-storey commuter car park.

## Construction progress update

In July we completed the concrete pours for level five. Work is now underway to complete the stairs and lifts and electrical and plumbing installations. We have also started installing guard rails, façades and painting.



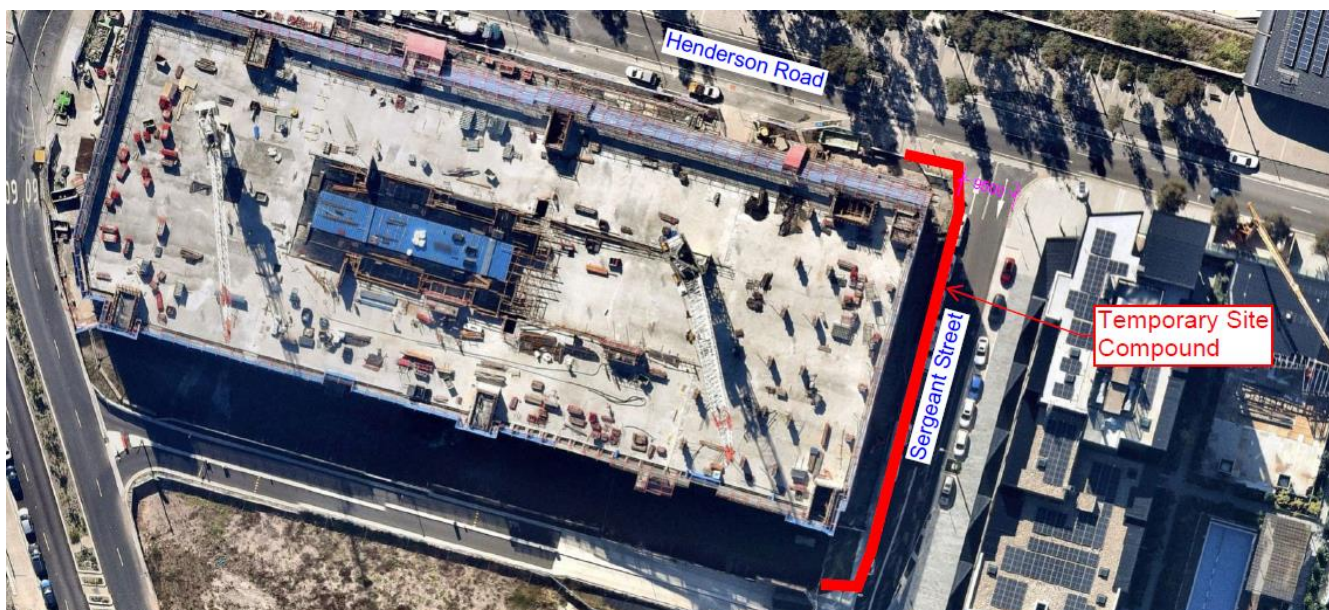
Construction progress on the new multi-storey car park at Edmondson Park

## Upcoming construction work

Work to occur in September will include:

- concrete pours for internal stairs
- removing scaffolding on the west and north-east corner of the site
- plumbing and electrical work in the building
- removing formwork from lower floors
- installing the exterior façade
- completing the structural steel roof
- connecting the water supply on the corner of MacDonald Road and General Boulevard
- removing the tower crane at the western end of the site
- installing solar panels
- high voltage electrical work
- glazing for the lift exterior.

From **Monday 12 July - Sunday 25 October 2021** a temporary site compound will be set up on the western side of Sergeant Street. This will allow us to dig underground services and complete landscaping work safely. A map is shown below.



For more information call 1800 684 490

Email [projects@transport.nsw.gov.au](mailto:projects@transport.nsw.gov.au) or visit [www.transport.nsw.gov.au/edmondsonpark](http://www.transport.nsw.gov.au/edmondsonpark)

For urgent enquiries or complaints regarding construction activities, please call 24 hours 1800 775 465

## Construction hours

Standard construction hours are now **7am to 6pm Monday to Saturday**. This is to facilitate social distancing on construction sites and support the health and wellbeing of workers.

## Changes to traffic during major concrete pour days

To allow the concrete pours and removal of the tower crane to take place safely, one lane will be closed on Henderson Road and MacDonald Road adjacent to the work site. Traffic control and signage will be in place to support motorists and pedestrians with the change in traffic arrangements.

## Keeping you up to date

We will continue to keep the community informed with regular project updates. More information about the project is available on our website [www.transport.nsw.gov.au/edmondsonpark](http://www.transport.nsw.gov.au/edmondsonpark). If you would like to sign up to our project distribution list, please contact us on **1800 684 490** or email [projects@transport.nsw.gov.au](mailto:projects@transport.nsw.gov.au) and we will email you regular updates. For all urgent enquiries or complaints regarding construction activities, please call our **24-hour Construction Response Line** on **1800 775 465**.



This document contains important information about public transport projects in your area. If you require the services of an interpreter, please contact the Translating and Interpreting Service on **131 450** and ask them to call Transport for NSW on **1800 684 490**. The interpreter will then assist you with translation.

For more information call **1800 684 490**

Email [projects@transport.nsw.gov.au](mailto:projects@transport.nsw.gov.au) or visit [www.transport.nsw.gov.au/edmondsonpark](http://www.transport.nsw.gov.au/edmondsonpark)

For urgent enquiries or complaints regarding construction activities, please call 24 hours **1800 775 465**