

# Commuter Car Park Program

## Edmondson Park

**Project update**

**February 2021**



*Construction progress on the new multi-storey car park at Edmondson Park, January 2021*

Transport for NSW is delivering more commuter car parking at Edmondson Park Station to provide you with more convenient access to public transport and reduce congestion on our roads.

The car park located south of the station will have approximately 1,000 additional commuter spaces and is expected to be completed and open to the community in mid-2021.

## Progress update

In January, concrete pours for the ground slab commenced with structural wall construction underway. Construction of the ground floor to the level 1 ramp and eastern suspended slab to level 1 is also underway.

Civil works are continuing the western side of the car park and will be completed this month. Removal of excavation material will be ongoing for the next few weeks.



## Upcoming construction work

During February, the following work will occur on the new multi-storey car park:

- Continuation of concrete pours for the ground floor slab
- Concrete pours for the suspended slabs to level 1
- Construction of load bearing walls and columns
- Plumbing and electrical work
- Installation of perimeter scaffold.

## Out of Hours Works

During February and early March, five major concrete pours will occur on site. These five concrete pours will make up the foundations for level one of the multi-storey car park.

Whilst the majority of these concrete pours will be undertaken during standard construction hours, finishing works will need to be undertaken out of hours on these particular dates:

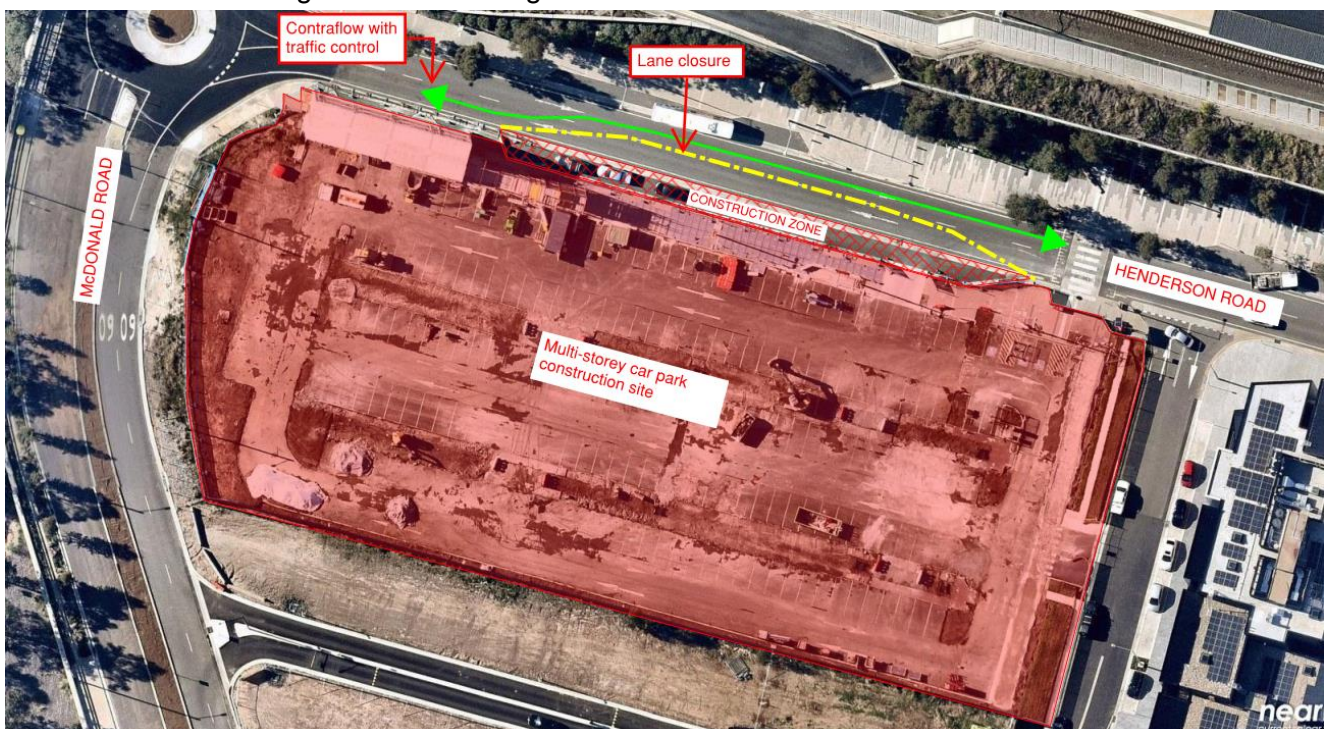
- Friday 12 February, 6pm – 10pm
- Monday 15 February, 6pm – 10pm
- Wednesday 17 February, 6pm – 10pm
- Wednesday 24 February, 6pm – 10pm
- Friday 5 March, 6pm – 10pm

These works are weather dependent and are subject to change. If they do change, we will update the community on revised dates and times.

There may be some noise impacts associated with these out of hours works but every effort will be made to minimise disruption to local residents. We apologise for any inconvenience caused.

## Changes to traffic during major concrete pour days

In order to carry out the concrete pours safely, one lane will be closed on Henderson Road adjacent to the work site (see below map) and traffic control and signage will be in place to support motorists and pedestrians with the change in traffic arrangements.



## Keeping you up to date

We will continue to keep the community informed with regular project updates. More information about the project is available on our website [www.transport.nsw.gov.au/edmondsonpark](http://www.transport.nsw.gov.au/edmondsonpark). If you would like to sign up to our project distribution list, please contact us on **1800 684 490** or email [projects@transport.nsw.gov.au](mailto:projects@transport.nsw.gov.au) and we will email you regular updates.

For all urgent enquiries or complaints regarding construction activities, please call our **24-hour Construction Response Line** on **1800 775 465**.



This document contains important information about public transport projects in your area. If you require the services of an interpreter, please contact the Translating and Interpreting Service on **131 450** and ask them to call Transport for NSW on **(02) 9200 0200**. The interpreter will then assist you with translation.

For more information call **1800 684 490**

Email [projects@transport.nsw.gov.au](mailto:projects@transport.nsw.gov.au) or visit [www.transport.nsw.gov.au/edmondsonpark](http://www.transport.nsw.gov.au/edmondsonpark)

For urgent enquiries or complaints regarding construction activities, please call 24 hours **1800 775 465**