



Commuter Car Park Program

Edmondson Park

Project update

January 2022



Construction progress on the new multi-storey commuter car park at Edmondson Park

Transport for NSW is delivering additional parking spaces for commuters at Edmondson Park Station to provide you with more convenient access to public transport and reduce congestion on our roads.

The new multi-storey commuter car park, providing up to 1,250 additional parking spaces, to the south of Edmondson Park Station is currently being constructed.

A temporary car park located north of the station is available to help minimise disruption to commuters during construction.

Construction progress update

In December, all façade and solar panel installation were completed. Work to install the awning, wheel stops, bollards, stair nosing's, tactile and wayfinding signage are underway. Landscaping work have also progressed.

For more information call **1800 684 490**

Email projects@transport.nsw.gov.au or visit www.transport.nsw.gov.au/edmondsonpark

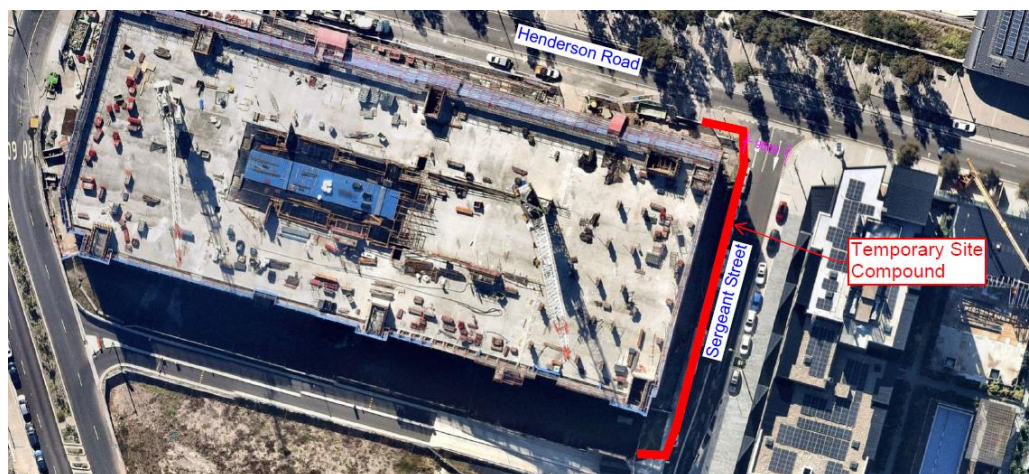
For urgent enquiries or complaints regarding construction activities, please call 24 hours **1800 775 465**

Upcoming construction work

Work to occur in January will include:

- plumbing and electrical work within the building
- completing the awning
- installing wheel stops, bollards, stair nosing's, tactile and signage
- landscaping work
- civil work
- installing fencing

A temporary site compound has been set up on the western side of Sergeant Street. This will allow us to dig underground services and complete landscaping work safely. A map is shown below.



Construction hours

Standard construction hours are **7am to 6pm Monday to Saturday**. The site will be closed from Saturday 25 December 2021 and will reopen on Tuesday 4 January 2022.

Changes to traffic during major concrete pour days

To allow the concrete pours, one lane will be closed on Henderson Road and MacDonald Road adjacent to the work site. Traffic control and signage will be in place to support motorists and pedestrians with the change in traffic arrangements.

Keeping you up to date

We will continue to keep the community informed with regular project updates. More information about the project is available on our website www.transport.nsw.gov.au/edmondsonpark. If you would like to sign up to our project distribution list, please contact us on **1800 684 490** or email projects@transport.nsw.gov.au and we will email you regular updates.

For all urgent enquiries or complaints regarding construction activities, please call our **24-hour Construction Response Line** on **1800 775 465**.



This document contains important information about public transport projects in your area. If you require the services of an interpreter, please contact the Translating and Interpreting Service on **131 450** and ask them to call Transport for NSW on **1800 684 490**. The interpreter will then assist you with translation.

For more information call **1800 684 490**

Email projects@transport.nsw.gov.au or visit transport.nsw.gov.au/edmondsonpark

For urgent enquiries or complaints regarding construction activities, please call 24 hours **1800 775 465**