

Commuter Car Park Program

Edmondson Park

Project update

March 2021



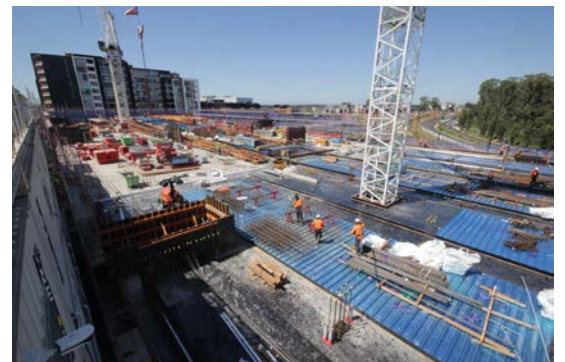
Construction progress on the new multi-storey car park at Edmondson Park, February 2021

Transport for NSW is delivering more commuter car parking at Edmondson Park Station to provide you with more convenient access to public transport and reduce congestion on our roads.

The car park located south of the station will have approximately 1,000 additional commuter spaces and is expected to be completed and open to the community in mid-2021.

Progress update

In February, concrete pours for the level one suspended slab commenced with structural walls and stairwell construction underway. Civil work on level one is now complete and scaffold installation for level two has commenced around the perimeter of the building.



Upcoming construction work

During March, the following work will occur on the new multi-storey car park:

- Continuation of concrete pours for the suspended concrete slabs for levels two and three
- Construction of load bearing walls and columns
- Construction of stair and lift cores through the building
- Installation of perimeter scaffold on levels two and three
- Plumbing and electrical work

Out of Hours Works

During March, nine major concrete pours are planned to occur on site. These nine concrete pours will make up the foundations for level two and level three of the multi-storey car park.

Whilst the majority of these concrete pours will be undertaken during standard construction hours, finishing work will need to be undertaken out of hours throughout March.

Due to the weather dependant nature of this work, we'll keep our website, www.transport.nsw.gov.au/edmondsonpark updated with the dates the work will be carried out. If you would like to know more about this work please email us at projects@transport.nsw.gov.au or call us on 1800 684 490.

There may be some noise impacts associated with these out of hours works but every effort will be made to minimise disruption to local residents. We apologise for any inconvenience caused.

Changes to traffic during major concrete pour days

In order to carry out the concrete pours safely, one lane will be closed on Henderson Road adjacent to the work site (see below map) and traffic control and signage will be in place to support motorists and pedestrians with the change in traffic arrangements.



For more information call 1800 684 490

Email projects@transport.nsw.gov.au or visit www.transport.nsw.gov.au/edmondsonpark

For urgent enquiries or complaints regarding construction activities, please call 24 hours 1800 775 465

Update to standard construction hours

To support the industry and continue the delivery of critical infrastructure, the NSW Government introduced new rules in 2020 allowing construction sites to operate extended hours on weekends.

Construction hours on a Saturday will be extended from **7am – 6pm** on the following dates:

- Saturday 6 March
- Saturday 13 March
- Saturday 20 March

After Friday 26 March standard construction hours will be resumed and are as follows:

- Monday to Friday: 7am to 6pm
- Saturday: 8am to 1pm
- No works on Sundays and Public Holidays

Keeping you up to date

We will continue to keep the community informed with regular project updates. More information about the project is available on our website www.transport.nsw.gov.au/edmondsonpark. If you would like to sign up to our project distribution list, please contact us on **1800 684 490** or email projects@transport.nsw.gov.au and we will email you regular updates.

For all urgent enquiries or complaints regarding construction activities, please call our **24-hour Construction Response Line** on **1800 775 465**.



This document contains important information about public transport projects in your area. If you require the services of an interpreter, please contact the Translating and Interpreting Service on **131 450** and ask them to call Transport for NSW on **1800 684 490**. The interpreter will then assist you with translation.

For more information call **1800 684 490**

Email projects@transport.nsw.gov.au or visit www.transport.nsw.gov.au/edmondsonpark

For urgent enquiries or complaints regarding construction activities, please call 24 hours **1800 775 465**