

Commuter Car Park Program

Edmondson Park

Project update

May 2021



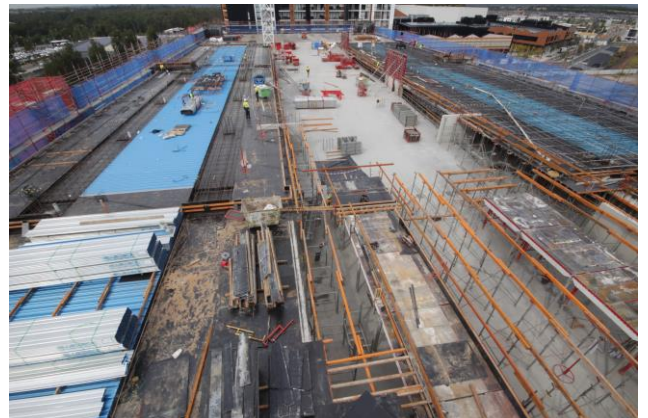
Construction progress on the new multi-storey car park at Edmondson Park, April 2021

Transport for NSW is delivering more commuter car parking at Edmondson Park Station to provide you with more convenient access to public transport and reduce congestion on our roads.

The car park located south of the station will have approximately 1,000 additional commuter spaces and is expected to be open to customers in mid-2021.

Progress update

In April, concrete pours for levels one to three were completed including walls and columns. Formwork is now progressing for level four. Electrical and plumbing installation work is also progressing for the new car park.



Upcoming construction work

During May, the following work will occur on the new multi-storey car park:

- Continuation of concrete pours for the suspended concrete slabs for level four
- Construction of load bearing walls and columns
- Construction of stairs and lift cores
- Installation of perimeter scaffold on level four
- Plumbing and electrical work within the building
- Removal of formwork from lower floors

In late May some work along MacDonald Road is scheduled to take place. This work will require single lane closures at times. Traffic control will be in place and access along MacDonald Road will be maintained.

Out of Hours Works

During May, one major concrete pour is expected to occur on site. This concrete pour is scheduled to take place on Monday 3 May and will complete level four of the multi-storey car park. Whilst majority of the work will occur during standard construction hours, finishing work will need to be undertaken out of hours between 6pm-10pm. This work is weather dependent and subject to change. We'll keep our website, www.transport.nsw.gov.au/edmondsonpark updated if there are any changes to the schedule.

Changes to traffic during major concrete pour days

In order to carry out the concrete pour safely, one lane will be closed on Henderson Road adjacent to the work site. Traffic control and signage will be in place to support motorists and pedestrians with the change in traffic arrangements.

Update to standard construction hours

Standard construction hours are now **7am to 6pm Monday to Saturday**. This is to facilitate social distancing on construction sites and support the health and wellbeing of workers.

Keeping you up to date

We will continue to keep the community informed with regular project updates. More information about the project is available on our website www.transport.nsw.gov.au/edmondsonpark. If you would like to sign up to our project distribution list, please contact us on **1800 684 490** or email projects@transport.nsw.gov.au and we will email you regular updates. For all urgent enquiries or complaints regarding construction activities, please call our **24-hour Construction Response Line** on **1800 775 465**.



This document contains important information about public transport projects in your area. If you require the services of an interpreter, please contact the Translating and Interpreting Service on **131 450** and ask them to call Transport for NSW on **1800 684 490**. The interpreter will then assist you with translation.

For more information call **1800 684 490**

Email projects@transport.nsw.gov.au or visit www.transport.nsw.gov.au/edmondsonpark

For urgent enquiries or complaints regarding construction activities, please call 24 hours **1800 775 465**