

Commuter Car Park Program

Edmondson Park

Project update

October 2021



Construction progress on the new multi-storey car park at Edmondson Park

Transport for NSW is delivering up to additional commuter parking spaces for commuters at Edmondson Park Station to provide you with more convenient access to public transport and reduce congestion on our roads.

The new multi-storey commuter car park, providing up to 1,250 additional parking spaces, to the south of Edmondson Park Station is currently being constructed.

Project status

Our work activities are being carried out in line with the current Public Health Orders and a COVID Safe plan is in place. The safety and wellbeing of our workplace and the wider community is our highest priority.

We are continuing construction on the fifth level, which will deliver a further much needed 250 commuter parking spaces in the new multi-storey commuter car park.

Construction progress update

In September we completed the concrete pours for the internal stairs. Work is now underway to complete the lifts, electrical and plumbing installations. We have also started painting and installing the guard rails and façades.

For more information call **1800 684 490**

Email projects@transport.nsw.gov.au or visit www.transport.nsw.gov.au/edmondsonpark

For urgent enquiries or complaints regarding construction activities, please call 24 hours **1800 775 465**

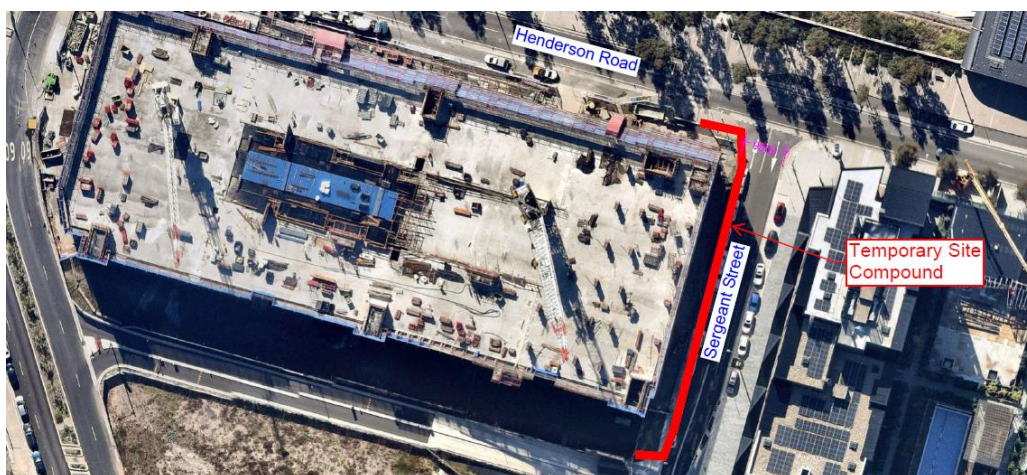
Upcoming construction work

Work to occur in October will include:

- removing the perimeter scaffold
- removing the tower crane at the eastern end of the site
- plumbing and electrical work within the building
- removing formwork from lower floors
- installing the exterior façade
- completing the structural steel roof
- installing solar panels
- glazing for the lift exterior
- delivering and energising the substation
- installing the lift
- connecting permanent water supply

A temporary site compound will be set up on the western side of Sergeant Street until **Sunday 25 October 2021**. This will allow us to dig underground services and complete landscaping work safely. A map is shown below.

On the 16th October we will be undertaking works to dismantle the projects Eastern tower crane. Works are scheduled to occur from 6am-8pm. In the first three hours we will be setting up the mobile crane and the last three hours removing the mobile crane. The set-up of the mobile crane will occur on Henderson Road with traffic control in place to direct traffic.



Construction hours

Standard construction hours are now **7am to 6pm Monday to Saturday**. This is to facilitate social distancing on construction sites and support the health and wellbeing of workers.

Changes to traffic during major concrete pour days

To allow the concrete pours and removal of the tower crane to take place safely, one lane will be closed on Henderson Road and MacDonald Road adjacent to the work site. Traffic control and signage will be in place to support motorists and pedestrians with the change in traffic arrangements.

Keeping you up to date

We will continue to keep the community informed with regular project updates. More information about the project is available on our website www.transport.nsw.gov.au/edmondsonpark. If you would like to sign up to our project distribution list, please contact us on **1800 684 490** or email projects@transport.nsw.gov.au and we will email you regular updates. For all urgent enquiries or complaints regarding construction activities, please call our **24-hour Construction Response Line** on **1800 775 465**.



This document contains important information about public transport projects in your area. If you require the services of an interpreter, please contact the Translating and Interpreting Service on **131 450** and ask them to call Transport for NSW on **1800 684 490**. The interpreter will then assist you with translation.

For more information call **1800 684 490**

Email projects@transport.nsw.gov.au or visit www.transport.nsw.gov.au/edmondsonpark

For urgent enquiries or complaints regarding construction activities, please call 24 hours **1800 775 465**