

Commuter Car Park Program

Emu Plains

Project update



Indicative artist's impressions of footbridge, subject to design finalisation

Transport for NSW is constructing a new commuter car park at Emu Plains Station to provide the community with more convenient access to public transport and reduce congestion on our roads. The project is jointly funded by the Australian and NSW Governments.

The car park, which will be accessed via a new roundabout at the intersection of Old Bathurst Road and Smith Street, will provide approximately 750 additional commuter parking spaces and is expected to be completed and open to commuters by late 2022.

Progress update

Over the past few months, site investigations and detailed design has progressed. Earlier this year, an Aboriginal Heritage item was discovered during field surveys as part of the Aboriginal Cultural Heritage Assessment. We are working with Registered Aboriginal Parties, a heritage consultant and Heritage NSW to determine the long term management of the item.

Subject to planning approval and conditions, **work is expected to begin on Monday 11 October 2021** for site establishment activities including set up of temporary site fencing and a site compound. Work may also include potholing and tree removal on Old Bathurst Road for the new roundabout. Some of this work may occur during night time and if so, further notification will be provided. A minimum of two trees will be planted for each tree removed.

Upcoming construction work

Subject to approval, the following work is planned to occur in October:

- Installing site fencing and amenities
- Deliveries of plant and equipment
- Vegetation and tree removal throughout the site including for the planned roundabout
- Ground testing (potholing) along Old Bathurst Road and within the car park site
- Service investigations, identification and protection including potholing
- Establishing sediment and erosion control measures
- Earthworks
- Removing waste materials and any contaminated materials identified on site
- Piling and foundation work for the footbridge adjacent to Emu Plains Station.

Equipment to be used will include: excavators, mulcher, grader, bulldozers, tipping trucks, jack hammers, geotechnical drilling rig, service vehicles, hand tools. All work is subject to weather, site conditions and COVID restrictions, and may change without notice.

Construction hours

Most of the construction work will occur between 7am to 6pm Monday to Saturday, however we may also need to work from 9am to 5pm on Sundays on occasion. These extended construction hours are approved by the NSW Government under special provisions during the COVID pandemic. Work generating high-impact noise such as jack hammering and concrete sawing will not be undertaken in the extended hours.

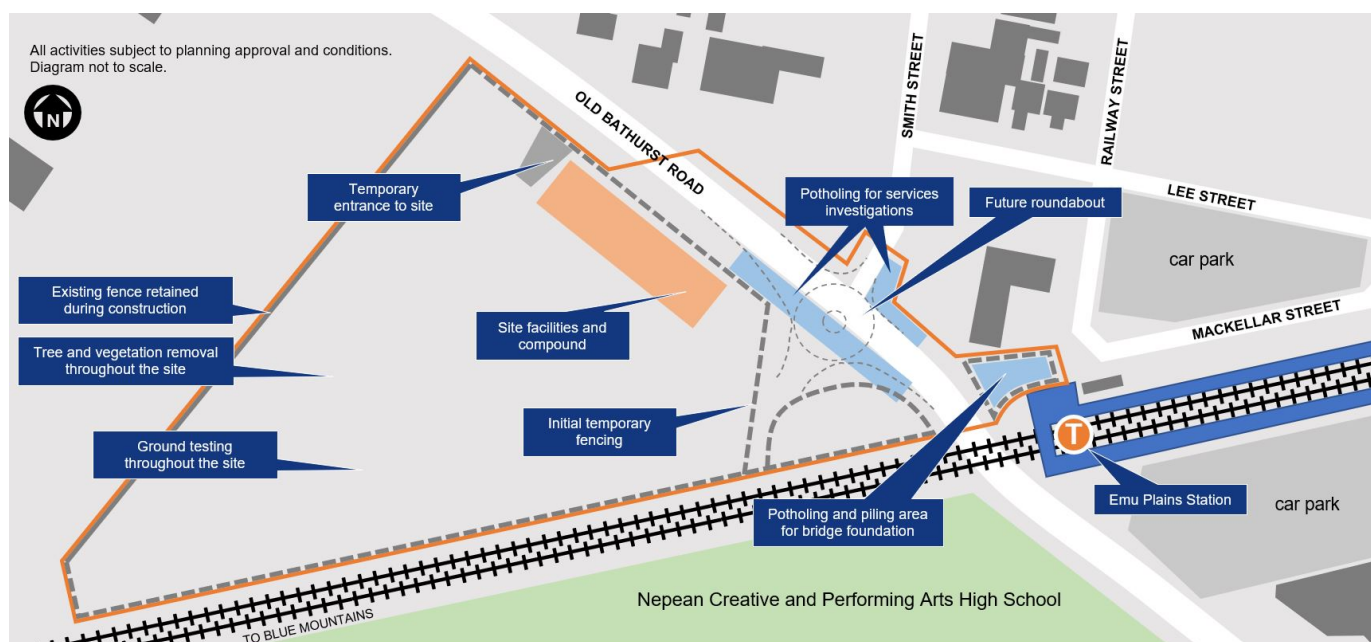
Our work will be carried out in line with the current Public Health Orders and a COVID safety plan is in place.

Keeping you up to date

We will continue to keep the community informed with regular project updates. More information about the project is available on our website www.transport.nsw.gov.au/emuplains. If you would like to sign up to our project distribution list, please contact us on **1800 684 490** or email projects@transport.nsw.gov.au and we will email you regular updates.

For all urgent enquiries or complaints regarding construction activities, please call our 24-hour Construction Response Line on **1800 775 465**.

Site map of Emu Plains Commuter Car Park



This document contains important information about public transport projects in your area. If you require the services of an interpreter, please contact the Translating and Interpreting Service on **131 450** and ask them to call Transport for NSW on **1800 684 490**. The interpreter will then assist you with translation.

For more information call **1800 684 490**

Email projects@transport.nsw.gov.au or visit www.transport.nsw.gov.au/emuplains

For urgent enquiries or complaints regarding construction activities, please call 24 hours **1800 775 465**