



Transport Access Program

Killara Station Upgrade

Project update

December 2021

Transport for NSW is upgrading Killara Station as part of the Transport Access Program (TAP) to make it easier for everyone to access, including people with a disability or limited mobility, parents/carers with prams, and customers with luggage.

Night work 13 to 14 December

On Monday 13 and Tuesday 14 December 2021 from 10pm to 5am, utility investigations will take place during a Sydney Trains shutdown, when trains will not be running. Work will take place in the rail corridor, on the station platforms, and on Culworth Avenue.

Traffic control and signage will be in place to assist pedestrians and motorists around the work area when required.

To complete the night work, equipment such as a vacuum excavation truck and lighting towers will be in use. We apologise for the inconvenience the work may cause and will minimise the impact by turning off vehicles and equipment when not in use, using non-tonal reversing beepers and acoustic barriers, and monitoring noise levels to ensure adherence with approvals. Lighting towers will be solar powered to further reduce noise.

Weekend work 17 to 19 December

For the safety of our workers, pedestrians and motorists, work will take place from **6pm Friday 17 December to 10pm Sunday 19 December 2021**.

Some of this work will take place in the rail corridor and needs to be carried out during a scheduled Sydney Trains track work period when trains will not be running. The station footbridge will be closed during this work.

Work during this time will include:

- excavation and micro piling for the new lift shafts
- utility relocation
- road line marking adjustments and installation of temporary traffic arrangements.

To complete this work, construction workers will require the use of equipment such as excavators, elevated work platform(s), cranes, demolition and demo saws, concrete trucks and pumps, tipper trucks, demolition hammers, lighting towers, rock breakers and specialised hand tools.

This work will be noisy at times. Wherever possible, measures to reduce noise will be implemented including scheduling noisy work during daytime hours, turning off vehicles and equipment when not in use, monitoring noise, using non-tonal reversing beepers and the installation of temporary acoustic barriers.

We apologise for the inconvenience and thank you for your patience during this important work.

For more information call **1800 684 490**

Email projects@transport.nsw.gov.au or visit transport.nsw.gov.au/killara

For urgent enquiries or complaints regarding construction activities, please call 24 hours **1800 775 465**

Please visit www.transportnsw.info or call **131 500** for up-to-date information regarding service updates and replacement buses during this time.

Access changes during weekend work

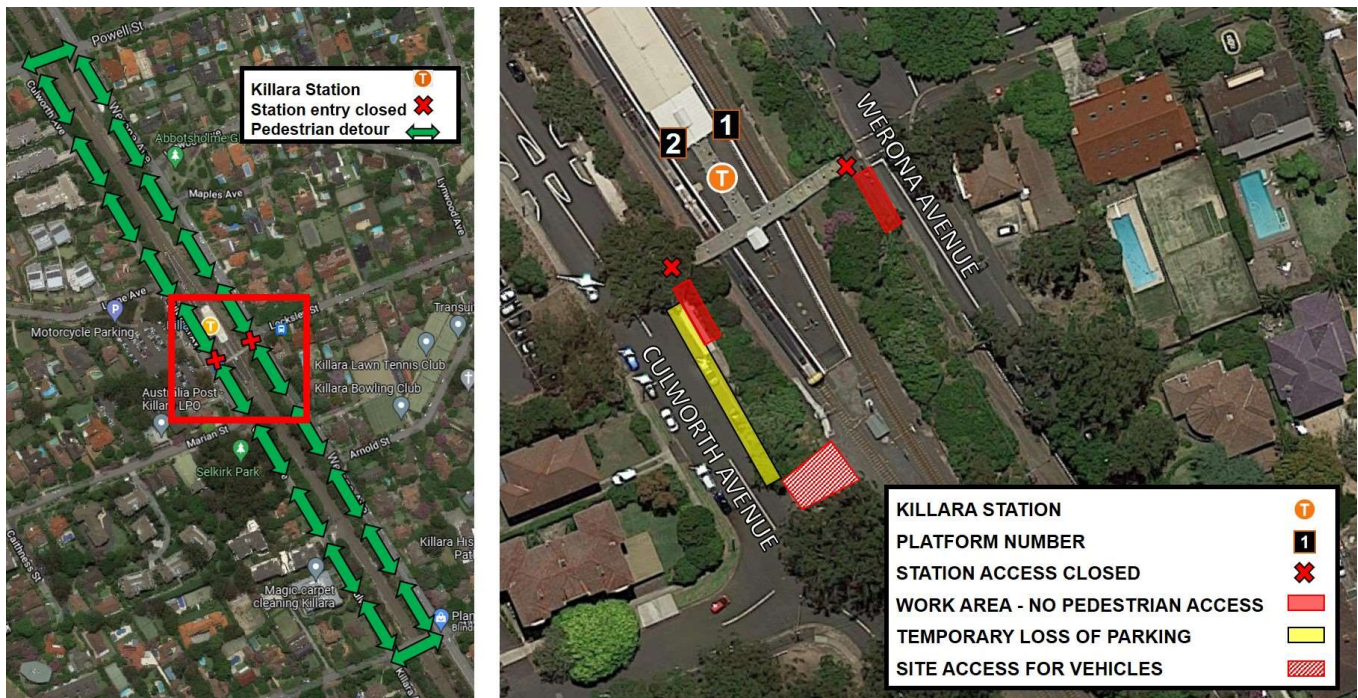
There will be temporary changes to traffic, parking, and pedestrian movements around the station while weekend work is carried out.

The **pedestrian changes** will include:

- Pedestrian access to the station will be closed from both Culworth Avenue and Werona Avenue. Customers will be able to detour via Powell Street or Stanhope Road to access the station
- The footpath on the station side of Werona Avenue south of the pedestrian footbridge will also be closed.

Please allow extra travel time and follow the instructions of traffic control staff and signage while this work is carried out. Please refer to the map that outlining these impacts and detours.

Location map

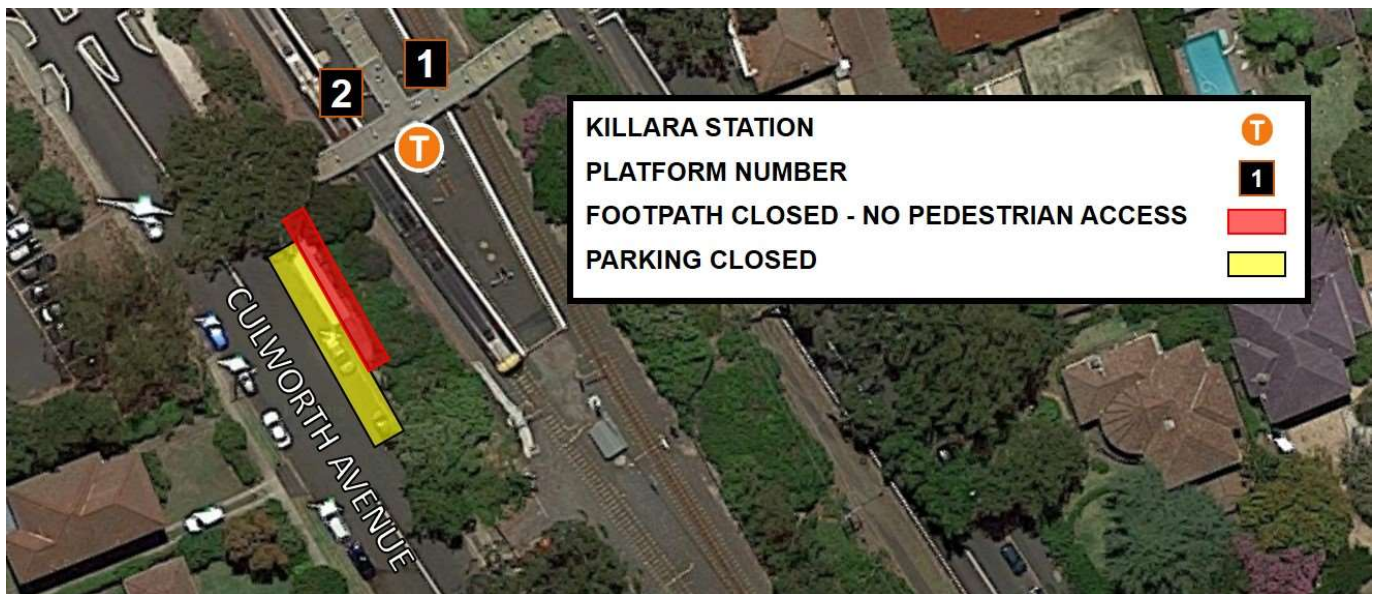


Temporary traffic and access changes

To allow for ongoing construction activities as part of the project, several traffic and access changes will be implemented on Culworth Avenue and Werona Avenue.

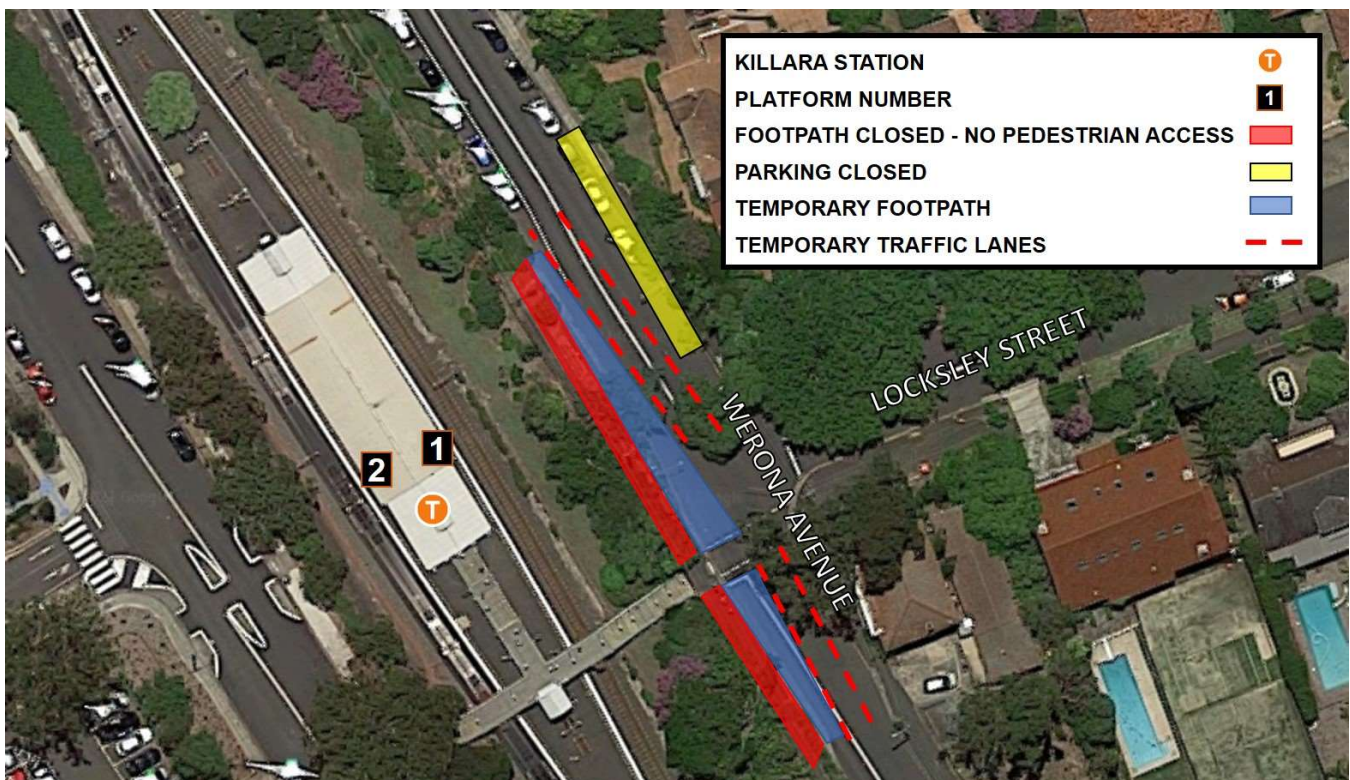
From **Thursday 9 December 2021** until **mid-2022**:

- Parking on the station side of Culworth Avenue will be temporarily closed
- The footpath between the station overbridge and Marion Street on the station side of Culworth Avenue will be closed.



From **Saturday 18 December 2021** until **mid-2022**:

- Parking north of the intersection of Werona Avenue and Locksley Street will be temporarily closed
- The footpath on the station side of Werona Avenue will be closed and a temporary footpath installed
- Traffic lanes on Werona Avenue will be remarked to create space for the temporary works area.



Construction hours

Standard construction hours are **7am to 6pm Monday to Friday** and **8am to 1pm on Saturdays**.

Keep in touch

We will continue to keep the community informed with regular project notifications and frequent online updates published to the project website www.transport.nsw.gov.au/killara.

If you would like to be added to the project distribution list, or for more information on the Killara Station Upgrade, please contact us on **1800 684 490** or email projects@transport.nsw.gov.au.

For all urgent enquiries or complaints regarding construction activities, please call our 24-hour Construction Response Line on **1800 775 465**.



This document contains important information about public transport projects in your area. If you require the services of an interpreter, please contact the Translating and Interpreting Service on **131 450** and ask them to call Transport for NSW on **1800 684 490**. The interpreter will then assist you with translation.