

Transport Access Program

Killara Station Upgrade

Planning approval and start of work



Artist's impression of the Killara Station Upgrade, subject to detailed design

The NSW Government is improving accessibility at Killara Station

Planning approval has been granted for the Killara Station Upgrade. This upgrade will be delivered as part of the Transport Access Program, an initiative to provide a better experience for public transport customers by delivering modern, safe and accessible infrastructure.

As part of the program, the Killara Station Upgrade will provide a station that is accessible to those with a disability, limited mobility, carers/parents with prams and customers with luggage.

The approval follows the public display of the Review of Environmental Factors (REF) from 30 June to 27 July 2021. During this period we received 15 submissions. The key issues raised in submissions were:

- support for improving accessibility at Killara Station
- requests the design be more sympathetic to the heritage character of the station including the heritage gardens and surrounding heritage items
- requests to investigate pedestrian crossing locations to provide access to the station

- requests to retain trees and vegetation surrounding the station, particularly in relation to the Werona Avenue footpath upgrades.

Transport for NSW would like to thank everyone who took the time to provide us with their feedback.

In response to community feedback, we have published a Determination Report on our project website which responds directly to questions, concerns and suggestions we received during the public display period. The Determination Report and planning approval conditions are available at www.transport.nsw.gov.au/killara.

Design changes

As a result of community and stakeholder feedback and ongoing design development, we have amended the design including:

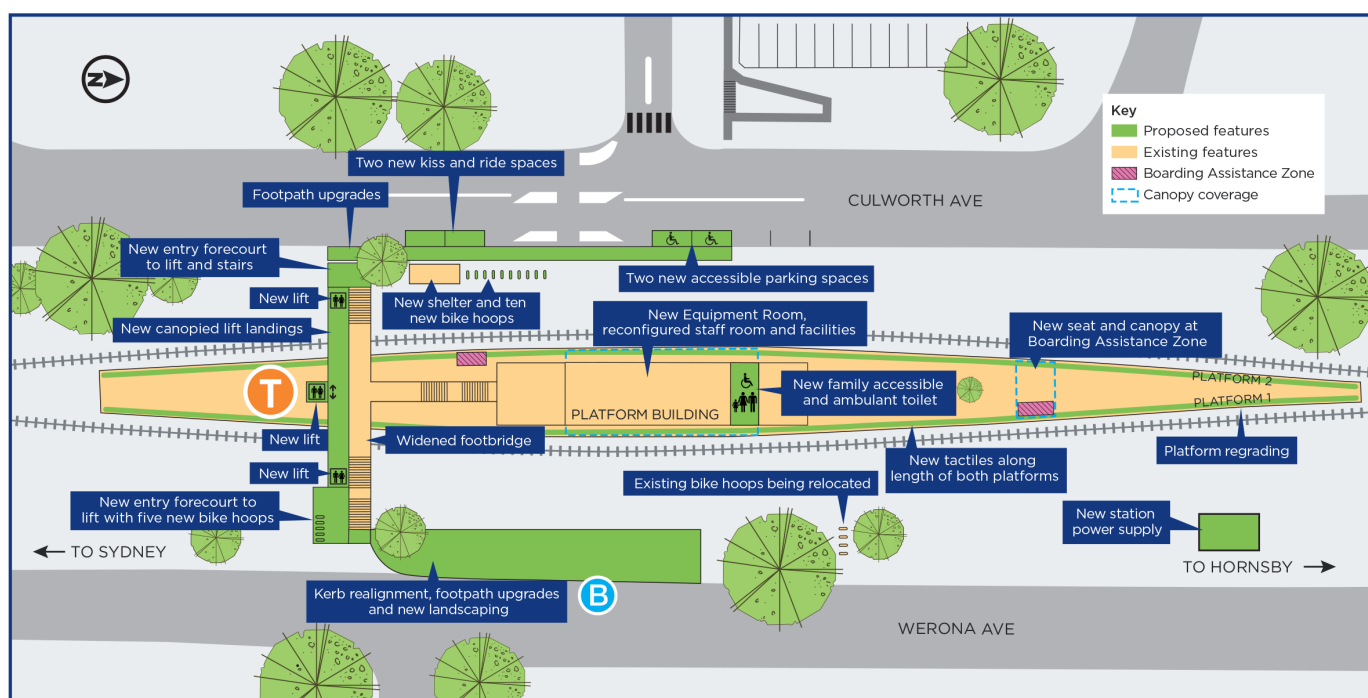
- reconfiguring the footpath layout on Werona Avenue
- modifying the station building to provide a new Station Services Equipment Room (SSER) and reconfigured staff room and facilities
- expanding the Werona Avenue lift entrance area
- relocating the main construction compound to the commuter side of the Culworth Avenue Commuter Car Park
- replacing the existing shelter on Culworth Avenue to provide accessible seating and a wheelchair waiting area
- relocating the proposed Boarding Assistance Zone (BAZ) location on Platform 2 and removing the BAZ canopy
- removing the proposed pedestrian crossing on Culworth Avenue
- removing the proposed ramp to the existing bus stop on Werona Avenue
- providing additional electrical upgrades
- creating an additional construction laydown and storage area for materials within the rail corridor.

Transport for NSW is committed to preserving the heritage and character of Killara Station, as part of this upgrade, and has consulted extensively with internal and external Heritage experts throughout its design. The updated design will have minimal impacts to the station's current heritage features and will retain the Newel posts, stairs and the heritage gardens.

Project overview

Currently, Killara Station is accessible via stairs only. Upgrading the station precinct will make Killara Station accessible to everyone, including those with a disability, limited mobility, parents/carers with prams and customers with luggage. Key benefits of the upgrade include:

- three lifts – one on each side of the footbridge, and one to the station platforms
- improvements to the station building to provide a new family accessible toilet and a unisex ambulant toilet
- a new canopy at the boarding assistance zone on Platform 1
- footpath upgrades on Werona Avenue and Culworth Avenue
- formalised accessible parking, and kiss and ride parking on Culworth Avenue
- new handrails and treads on stairs where required
- power supply upgrades to support the new infrastructure
- improvements to lighting, CCTV and station communications.



Revised key features of the Killara Station Upgrade (indicative only, subject to detailed design)

Construction to start

Work on site at Killara Station will start in early November. Work will include:

- site compound establishment
- demolition of the shop kiosk on the platform
- vegetation removal
- vacuum excavation and mechanical compaction
- geotechnical drilling.

To complete this work, workers will require the use of specialised equipment including cranes, excavators, trucks, mulching/chipping trucks, concrete saw, geotechnical drilling rig and non-powered hand tools.

Site compound and parking impacts

As outlined in the Determination Report, a temporary construction compound will be located within the Transport for NSW operated (untimed) commuter car park off Culworth Avenue. The temporary compound is required to accommodate a site office, amenities, laydown and storage area for materials during the construction work.

This will result in the temporary loss of up to 25 untimed parking spaces for the duration of construction. The closure will be in place from **Monday 1 November 2021** until **February 2023**.

Transport for NSW is investigating the use of the Marian Street Theatre parking to offset the temporary parking loss in this commuter car park. Please refer to the location map for further information.

Location map



Weekend work in November

Weekend work will take place from **10pm Friday 5 November to 5am Monday 8 November 2021**.

For the safety of our workers, pedestrians and motorists, the work will take place during a scheduled Sydney Trains track work period when trains will not be running.

Work during this time will include:

- site compound establishment
- demolition of the shop kiosk on the platform
- geotechnical digging and investigation work.

To complete this work, construction workers will require the use of equipment such as excavators, elevated work platform(s), cranes, demolition and wall saws, concrete trucks and pumps, dump trucks, demolition hammers, rollers, lighting towers, rock breakers and specialised hand tools.

This work will be noisy at times. Wherever possible, measures to reduce noise will be implemented including scheduling noisy work during daytime hours, turning off vehicles and equipment when not in use, monitoring noise, using non-tonal reversing beepers and the installation of temporary acoustic barriers.

We apologise for the inconvenience and thank you for your patience during this important work.

Please visit www.transportnsw.info or call **131 500** for up to date information regarding service updates and replacement buses during this time.

Access changes during weekend work

There will be temporary changes to traffic, parking and pedestrian movements around the station while weekend work is carried out.

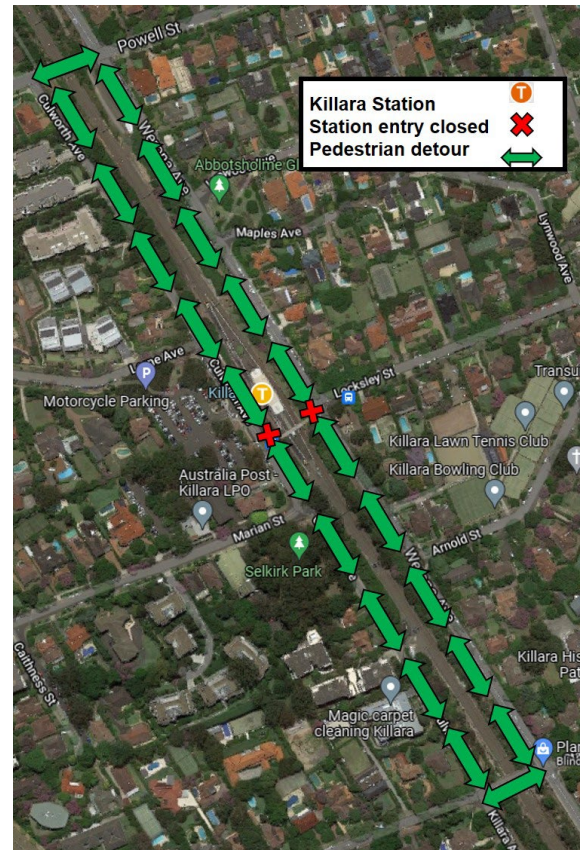
The **parking changes** will include:

- Five parking spaces on Culworth Avenue will be temporarily closed to allow for safe removal of trees.

The **pedestrian changes** will include:

- Pedestrian access to the station will be closed from both Culworth Avenue and Werona Avenue. Customers can detour via Powell Street or Stanhope Road.
- The footpath on the station side of Culworth Avenue between the pedestrian footbridge and Marian Street will be closed.
- The footpath on the station side of Werona Avenue south of the pedestrian footbridge will also be closed.

Please allow extra travel time and follow the instructions of traffic control staff and signage while this work is carried out. Please refer to the location map as well as the adjoining map outlining these impacts and detours.



Construction hours

Standard construction hours are **7am to 6pm Monday to Friday** and **8am to 1pm on Saturdays**.

Keep in touch

We will continue to keep the community informed with regular project notifications and frequent online updates published to the project website www.transport.nsw.gov.au/killara.

If you would like to be added to the project distribution list, or for more information on the Killara Station Upgrade, please contact us on **1800 684 490** or email projects@transport.nsw.gov.au.

For all urgent enquiries or complaints regarding construction activities, please call our 24-hour Construction Response Line on **1800 775 465**.



This document contains important information about public transport projects in your area. If you require the services of an interpreter, please contact the Translating and Interpreting Service on **131 450** and ask them to call Transport for NSW on **1800 684 490**. The interpreter will then assist you with translation.