



Commuter Car Park Program

Leppington

Project update

June 2021



Indicative artist's impression of the façade at Leppington, subject to further design

Transport for NSW is delivering a multi-storey car park with approximately 1,000 additional parking spaces at Leppington Station to provide you with more convenient access to public transport and reduce congestion on our roads.

The new multi-storey car park is expected to be open to customers in mid-2021.

Progress update

In May the installation of the lift and structural steel roofing commenced and the stair shafts were completed. Services fit-out, painting and façade installation commenced for the multi-storey car park.



For more information call **1800 684 490**

Email projects@transport.nsw.gov.au or visit www.transport.nsw.gov.au/leppington

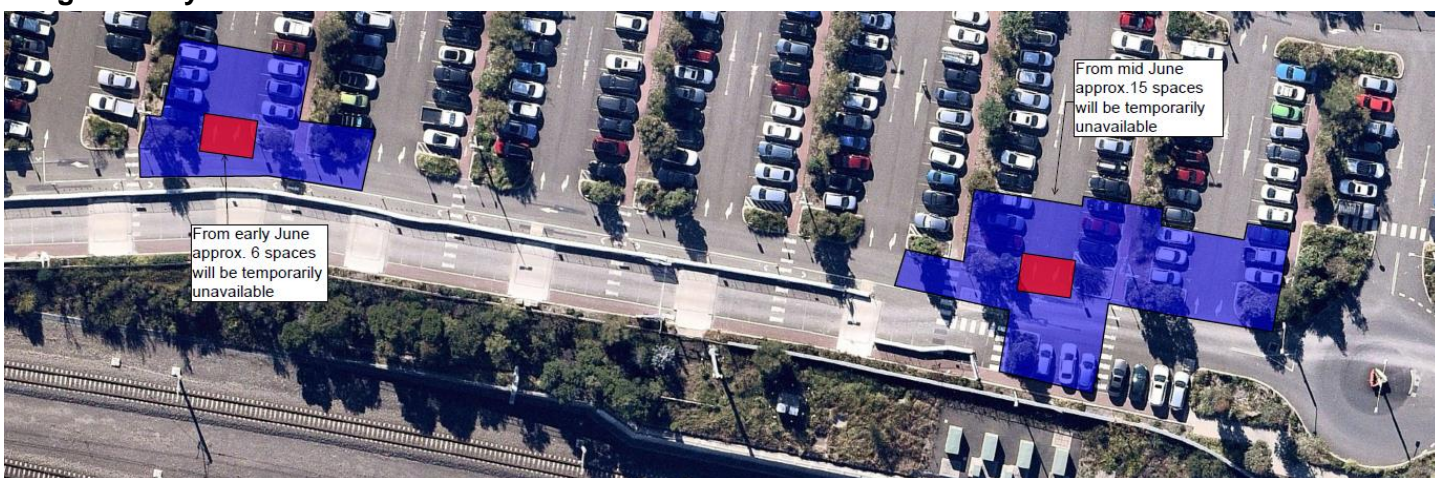
For urgent enquiries or complaints regarding construction activities, please call 24 hours **1800 775 465**

Temporary removal of approximately 15 commuter parking spaces in June and July

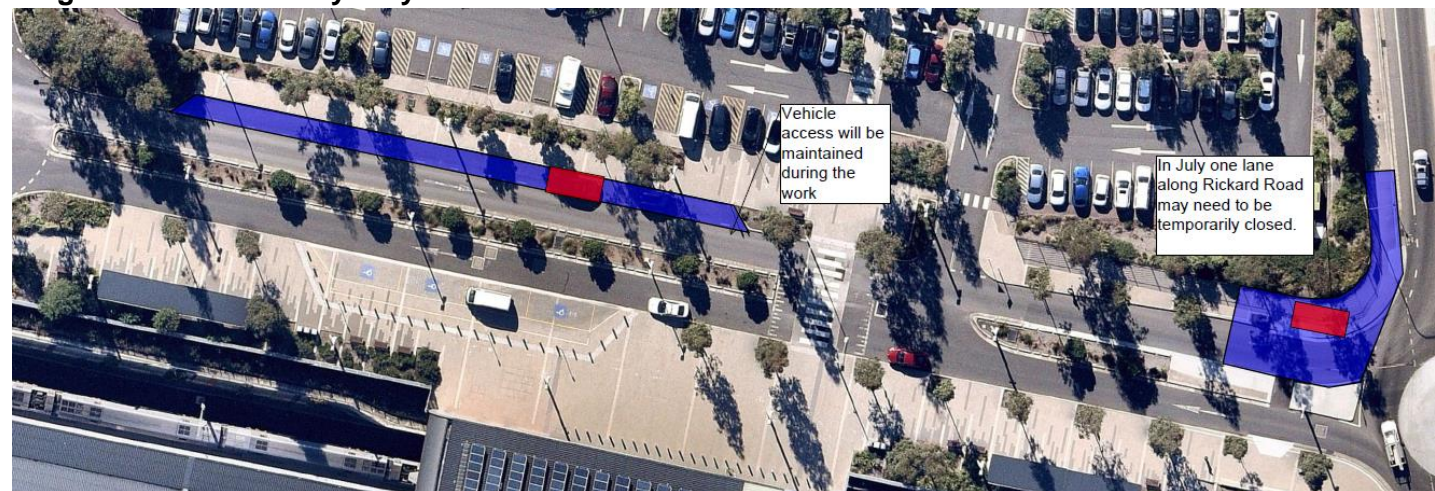
What is happening?

Over June and July we need to undertake some work in the existing ground level commuter car park to connect the new multi-storey car park to electrical and water services. This work will involve setting up small site compounds at underbore locations in the existing ground level commuter car park and using machinery to lay pipe and cables. In order to complete this work safely, we need to temporarily remove approximately 15 parking spaces at a time and alter some traffic flow in the existing commuter car park. To minimise impact to commuters, this work will be staged starting closest to our construction site and working our way towards Rickard Road. Please see maps below for an overview of bore locations and parking spaces to be temporarily removed during the work.

Stage 1 Early June - closest to our construction site



Stage 2 Late June/early July at Rickard Road



What will the work look like?

At each bore location a small compound will be set up. Equipment to be used will include a boring rig, vaccum truck, 5 tonne excavator, trailer mounted drill fluid mixing system and a tool truck.

For more information call **1800 684 490**

Email projects@transport.nsw.gov.au or visit www.transport.nsw.gov.au/leppington

For urgent enquiries or complaints regarding construction activities, please call 24 hours **1800 775 465**

How many spaces will be removed?

Each underbore location will require the temporary removal of up to 15 parking spaces for approximately one week. These spaces will be cordoned off the night before work begins. Each underbore location will be set up for approximately one week before the next site compound is established.

Signage will be installed ahead of the work to advise customers which spaces will be unavailable. Traffic control will also be in place for the duration of the work to help customers with the changes to traffic flow around the car park.

Once we reach the roundabout at Rickard Road at the entry to the commuter car park, we may need to temporarily close a single lane to complete the trenching work. Traffic control will be in place for the duration of the work to help customers with traffic flow changes.

Upcoming construction work

During June and July the following work will occur on the new multi-storey car park:

- Completion of structural steel
- Completion of façade
- Scaffold stripping
- Commencement of site demobilisation
- External works and landscaping
- Connecting the multi-storey car park to electrical and water services

Façade design

Acclaimed artist Shane Smithers has developed the façade design for the Leppington Commuter Car Park. The intention of the Leppington façade has always been driven toward a representation of Aboriginal culture. At Leppington, where the site was essentially undeveloped, the opportunity was taken to create an artwork that would form a central part of the future town centre development. Shane is well known for his focus on earth and sky and the artwork that forms the façade represents this. The vertical lines represent our connection to sky and rain, while the horizontal lines represent our connection with the earth. The horizontal lines are shaped and coloured to represent the twitches in the earth's strata. This is enhanced by the shaded and highlighted steps, creating an illusion of the gullies and hillsides that form our country. Our connection to the sky and earth is important as together they sustain our existence.



For more information call **1800 684 490**

Email projects@transport.nsw.gov.au or visit www.transport.nsw.gov.au/leppington

For urgent enquiries or complaints regarding construction activities, please call 24 hours **1800 775 465**

Working hours

Work will be conducted between **7am and 6pm Monday to Sunday**.

Keeping you up to date

We will continue to keep the community informed with regular project updates. More information is available on our website www.transport.nsw.gov.au/leppington. If you would like to sign up to our project distribution list, please contact us on **1800 684 490** or email projects@transport.nsw.gov.au and we will email you regular updates.

For all urgent enquiries or complaints regarding construction activities, please call our **24-hour Construction Response Line** on **1800 775 465**.



This document contains important information about public transport projects in your area. If you require the services of an interpreter, please contact the Translating and Interpreting Service on **131 450** and ask them to call Transport for NSW on **1800 684 490**. The interpreter will then assist you with translation.

For more information call **1800 684 490**

Email projects@transport.nsw.gov.au or visit www.transport.nsw.gov.au/leppington

For urgent enquiries or complaints regarding construction activities, please call 24 hours **1800 775 465**