

Regional Rail

Mindyarra Maintenance Centre

Community Notification

We are replacing the ageing NSW regional rail fleet of XPT, XPLOER and Endeavour trains.

The new trains will provide improved safety, accessibility, facilities and reliability for customers who travel from many NSW regional centres to Sydney, as well as Canberra, Melbourne and Brisbane. To support the new fleet, a new purpose-built maintenance centre is being constructed in Dubbo. Momentum Trains is delivering the Regional Rail Project on behalf of Transport for NSW.

Upcoming work

Construction work continues at **Mindyarra Maintenance Centre**, located off **White Street** during standard construction hours, **7am to 6pm every day**, weather permitting.

Activities will include excavation, concreting, drainage work and the installation of underground services, cladding and structural steel.

Some work may need to be scheduled outside of standard construction hours however the local community and businesses will be notified prior to work taking place.

What you may notice

Mobile cranes are now being used to install structural steel for the main building.

Heavy machinery will continue to operate on site. Material deliveries include concrete, pipes, cabling, formwork, steel re-enforcement and structural steel. Excavated material will continue to be transported offsite. Construction equipment to be used includes, but is not limited to;

- hand tools
- excavators
- dump trucks
- loaders
- trucks and trailers
- water carts
- graders
- vacuum trucks
- mobile cranes
- concrete trucks and pumps
- heavy and light vehicles
- skid steer loaders.

Transport for NSW is committed to minimising disruption to the community. We will take every possible step to reduce the impact of our work. We apologise for any disruption these activities may cause.

The project will use non-potable (non-drinking) water for dust suppression during these activities.

Map of work area

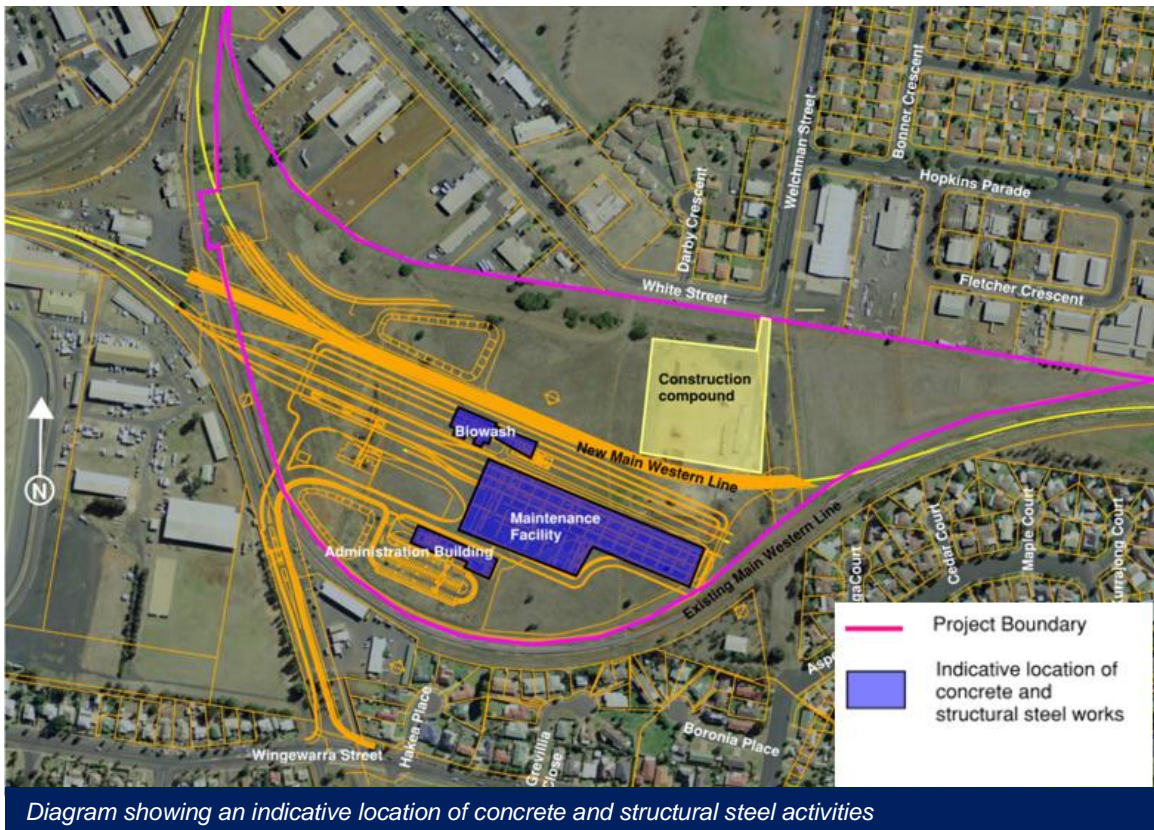


Diagram showing an indicative location of concrete and structural steel activities

Revised construction hours due to COVID-19

The NSW Government has introduced new rules to support industry and continue the delivery of critical infrastructure during COVID-19.

In accordance with the *Environmental Planning and Assessment (COVID-19 Development – Infrastructure Construction Work Days) Order 2020*, standard construction hours are **7am to 6pm** every day, including public holidays. The Order remains in force until 31 March 2022.

Work at the maintenance centre site is not planned for Public Holidays at this stage.

More information

Working closely and effectively with the local community is a priority for Transport for NSW and Momentum Trains. We will keep you up to date about upcoming work, with regular notifications and updates on our website.

If you have questions or concerns about this work, or would like more information about the Regional Rail Project, please contact **1800 684 490**, email projects@transport.nsw.gov.au or visit transport.nsw.gov.au/projects/current-projects/regional-rail.

For urgent enquiries or complaints about our construction activities, please contact our 24-hour construction response line on **1800 775 465**.



This document contains information about public transport projects in your area. If you require the services of an interpreter, please contact the Translating and Interpreting Service on **131 450** and ask them to call the Transport Projects Division on **(02) 9200 0200**. The interpreter will then assist you with translation.

For more information call **1800 684 490**,
Email projects@transport.nsw.gov.au or visit transport.nsw.gov.au/projects
For urgent enquiries or complaints regarding construction activities, please call 24 hours **1800 775 465**