

Commuter Car Park Program North Rocks



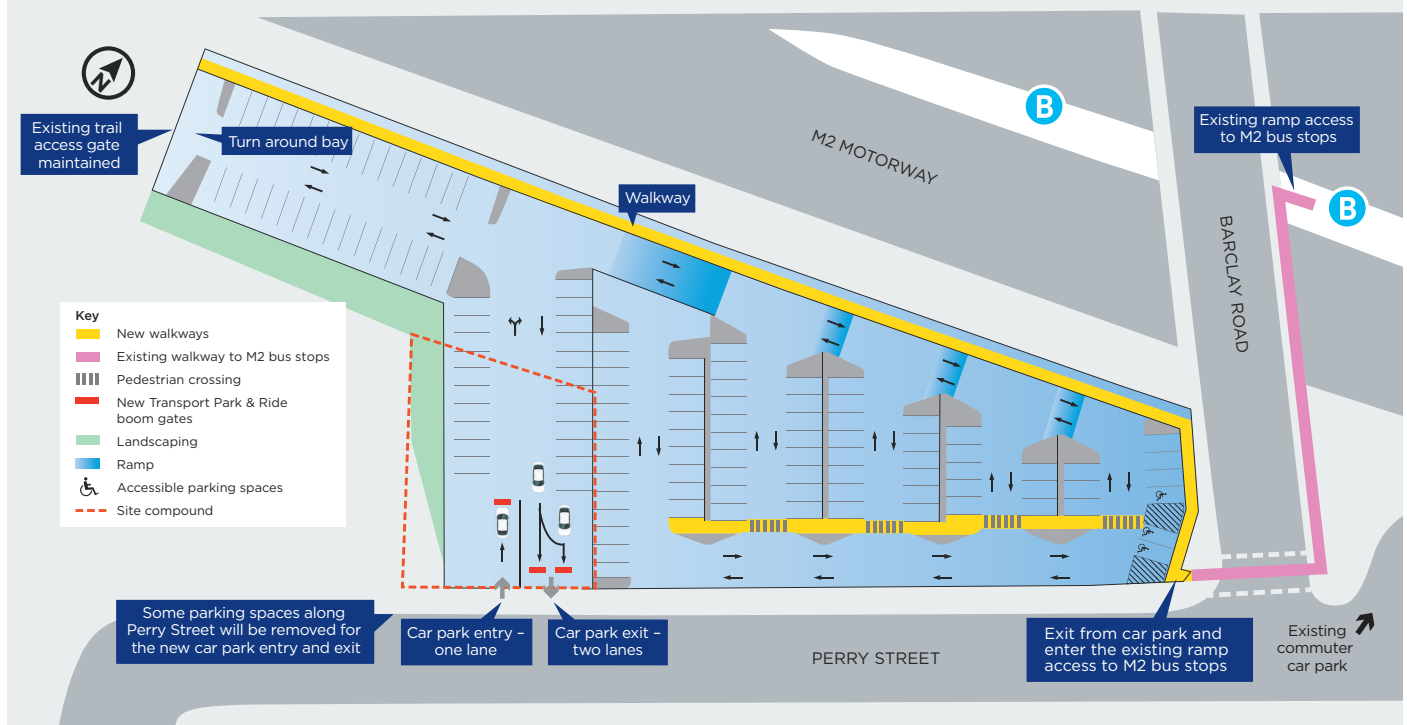
*Artist's impression of
North Rocks commuter car park,
subject to detailed design*

More commuter parking at North Rocks is on the way

Planning approval has been granted for a new ground level commuter car park, providing approximately 135 additional parking spaces on the corner of Barclay Road and Perry Street.

Thank you to everyone who provided feedback on the proposed concept design last year. Your feedback was considered in the development of the Review of Environmental Factors, the formal planning document for this project. You can download the report, including answers to feedback received at www.transport.nsw.gov.au/northrocks.

Key features of the North Rocks Commuter Car Park



Site map of new commuter car park, subject to detailed design.

Key themes raised during consultation

Some of the key themes raised during consultation include:

Number of commuter parking spaces

The new ground level commuter car park at North Rocks, will provide around 135 additional commuter parking spaces for customers using the M2 bus stop.

Traffic flow in the area

We heard feedback from the community regarding traffic flow along Barclay Road and Perry Street and a suggestion to join the car park entry and exit to the nearby golf course via a roundabout.

As part of the development of the Review of Environmental Factors, we undertook traffic assessments to understand how nearby streets currently operate and how the car park may impact traffic flow.

Our studies showed that a roundabout was not required as traffic generated by the new car park is not expected to compromise the safety or function

of the surrounding road network, with the Barclay Road intersection expected to experience similar conditions. In addition to this, the current width of Perry Street, including the verge, does not allow enough space to accommodate a roundabout and would require removing existing on-street parking. We also investigated providing entry and exit points to the car park closer to the Barclay Road intersection however this was not possible as it would create sight line issues for drivers entering and exiting the car park.

Pedestrian and vehicle safety

The car park will be designed with pedestrian and vehicle safety as the highest priority. Our traffic assessments have shown that additional traffic generated by the new car park is not expected to compromise the safety or function of the surrounding road network, including the operation of the Barclay Road intersection.

Request for bicycle facilities

We are planning to install new bicycle hoops as part of this project. The location and number of these hoops will be confirmed during detailed design.

Landscaping

We had some questions from the community regarding landscaping in the car park and concerns over the heat island effect in North

Rocks. Where possible, existing trees will be retained behind the Perry St residences. Any trees removed as part of the project will be offset in consultation with Council.

During the next phase of design, we will prepare an Urban Design and Landscape Plan which will consider urban heat, landscaping and planting of trees in the area.



Artist's impression of North Rocks commuter car park, subject to detailed design

Next steps

Work on the detailed design is now underway with major construction to start in the coming months. The new car park is expected to be open to commuters mid 2022.

Keeping you up to date

We will continue to keep you informed about the project through notifications to customers, local residents and businesses and frequent updates published on our website:

transport.nsw.gov.au/northrocks.

If you would like to be added to the distribution list to receive regular project updates via email, please contact us on **1800 684 490** or email projects@transport.nsw.gov.au.

About the Commuter Car Park Program

The Commuter Car Park Program is a NSW Government initiative to provide you with more convenient access to public transport interchanges and help ease congestion on our roads. We have already delivered more than 10,000 commuter car spaces across Sydney since 2011, with another 8,000 on the way.

Simplified Chinese

这份文件包含你所在地区公共交通工程项目的重要信息。如果你需要传译服务，请致电翻译与传译服务机构，电话 **131 450**，要求他们为你接通交通部(Transport for NSW)，电话是 **1800 684 490**。传译员会为你做翻译。



This document contains important information about public transport projects in your area. If you require the services of an interpreter, please contact the Translating and Interpreting Service on **131 450** and ask them to call Transport for NSW on **1800 684 490**. The interpreter will then assist you with translation.