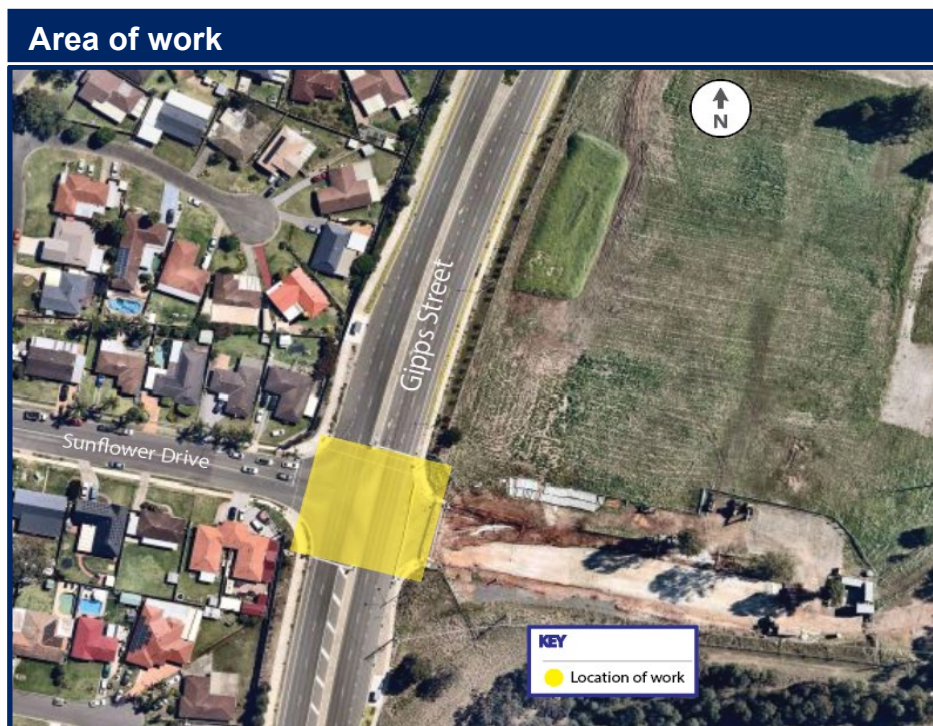


## Night works on Gipps Street, Claremont Meadows from Monday 15 November

Transport for NSW (TfNSW) is upgrading the Gipps Street intersection at Sunflower Drive North and undertaking enabling work for the construction for the Sydney Metro – Western Sydney Airport. The work includes relocating utilities, new and temporary pavement and the installation of new signage, line marking and upgrading the existing traffic control signal at intersection.

### What happens next?

The project is nearing completion with final works underway to complete the intersection (**see map below**). These works involve changes to traffic signals and asphaltting and will therefore be carried out at night to minimise traffic disruption.



### Work will include:

- removing asphalt and reinstating to install upgraded traffic signals
- completing median construction
- installing of vehicle loop detectors, new signage, and line marking

**Equipment used** for this work includes, but is not limited to: a 3 tonne tipper truck, milling truck, rollers, bob-cat, pressure-washer (water-blasting), and a bogie truck.

## How will the work affect you?

There will be temporary traffic changes during our work hours to ensure the work zone is safe. This may affect travel times. Please keep to speed limits, and follow signs and traffic controllers' directions.

- Our work will generate some noise and our team will minimise impacts, where possible, including completing noisier activities by 12 midnight.
- There will be an increase of light and construction vehicles near the work sites.
- There will be minor traffic disruptions and traffic control measures will be in place.

For traffic updates, please call 132 701, or visit [livetraffic.com](http://livetraffic.com) or download the Live Traffic NSW App.

## Our work schedule

Work hours will be Monday to Sunday 7am to 6pm. Our night work hours will be Sunday to Thursday nights from 8pm to 5am.

Night work will be carried out over 18 shifts between **Monday 15 November and Thursday 16 December**. From Monday 15 November to Thursday 16 December work will take place to install a stormwater pipe, and from Tuesday 30 November to Thursday 16 December to complete median construction. No construction work will take place on Friday and Saturday nights. We may require some scheduling flexibility or additional days' work depending on weather conditions and Public Health Orders.

## Contact

If you have any questions, please contact our project team, on **1800 684 490** or [projects@transport.nsw.gov.au](mailto:projects@transport.nsw.gov.au)

For enquiries relating to the Sydney Metro – Western Sydney Airport project, please call **1800 717 703** or email [sydneymetrowsa@transport.nsw.gov.au](mailto:sydneymetrowsa@transport.nsw.gov.au).

Thank you for your patience during this important work.



This document contains important information about transport projects in your area. If you require the services of an interpreter, please contact the Translating and Interpreting Service on **131 450** and ask them to call Transport for NSW on **1800 684 490**. The interpreter will then assist you with translation.