



Transport Access Program

Petersham Station Upgrade

Community notification

January 2021

Upcoming work

A traffic signal box on Trafalgar St will be relocated on Thursday 28 January to allow for the construction of the new ramp. This will involve a temporary disruption to the signalised intersection at Trafalgar St and Regent St, during which time traffic controllers will be in place to assist with traffic movements.

To ensure the safety of our workers and the community, weekend and night work will also occur during a pre-determined Sydney Trains scheduled trackwork weekend on 30 and 31 January 2021. During that weekend, as trains are not running, **the station and footbridge will be closed**. For up-to-date information about services during these times please visit transportnsw.info or call 131 500.

Dates	Work hours	Location	Activities
Thursday 28 January to Friday 29 January 2021.	From 8pm Thursday to 1am Friday.	Intersection of Trafalgar Street and Regent Street.	Work activities include: <ul style="list-style-type: none">• Temporary disconnection of power to traffic signals• Relocation of traffic signal box• Testing of the relocated traffic signal box Equipment to be used include power and hand tools.
Saturday 30 January to Monday 1 February 2021.	From 2am Saturday to 4am Monday.	Trafalgar Street work area, station footbridge, platform and tracks. Note: Station is not operational. Rail replacement buses will be available.	Work activities include: <ul style="list-style-type: none">• installation of concrete beams and ramp on Trafalgar Street to prepare for a new accessible ramp• excavation, piling and concrete work on the platforms to prepare for the lift well foundations and installation of services• excavation and trenching across the rail tracks to connect new underground services to the station area within the rail corridor. Equipment to be used includes dump trucks, excavators, piling rig, delivery trucks, cranes, truck-mounted crane, concrete pump, concrete trucks, concrete saws, mobile lighting towers, power and hand tools.

Pedestrian and traffic detours during weekend work

From **2am Saturday 30 January 2021 until 4am Monday 1 February 2021** there will be changes on Trafalgar Street to enable the safe operation of two large mobile cranes, including:

For more information call **1800 684 490**, email projects@transport.nsw.gov.au or visit transport.nsw.gov.au/Petersham
For urgent enquiries or complaints regarding construction activities, please call 24 hours **1800 775 465**

- a temporary lane closure on Trafalgar Street (eastbound) to all vehicles (buses excepted) – **detour via New Canterbury Road or Audley Street**
- bus stop relocation – follow signage and the direction of traffic controllers when boarding/alighting rail replacement buses and other services
- station footbridge closure – detour via the station underpass or Crystal Street (step-free route).

Traffic control will be in place on Trafalgar Street and signage will help motorists and pedestrians with these temporary changes. Please refer to the map overleaf for more information and allow for extra travel time.

For up to date information about traffic conditions please visit livetraffic.com or use the Live Traffic App.

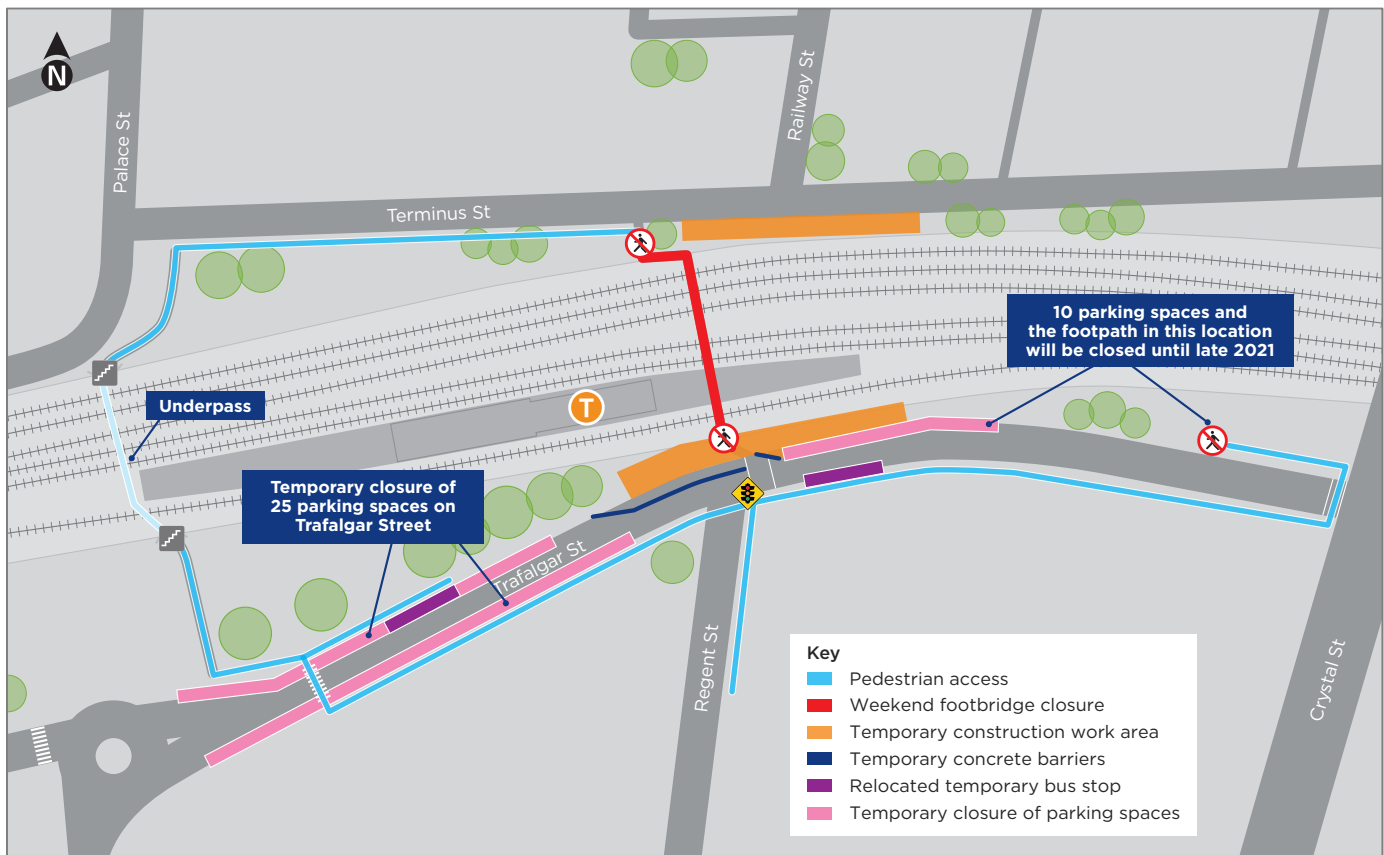
Thank you for your patience during this important work.

Temporary parking changes on Trafalgar Street

Up to 25 parking spaces on Trafalgar Street, between Regent Street and Audley Street will be temporarily unavailable to allow two large cranes to safely operate during the trackwork weekend.

- from **4am Friday 29 January until 4am Monday 1 February 2021**, 12 spaces on the north side of Trafalgar Street will be unavailable
- **from 3pm Friday 29 January until 4am Monday 1 February 2021**, 13 spaces on the south side of Trafalgar Street will be unavailable

Map of parking and access changes on Trafalgar Street during weekend work



Keep in touch

If you would like to be added to the project distribution email list, or for more information on the Petersham Station Upgrade, please contact us on **1800 684 490** or email projects@transport.nsw.gov.au.



This document contains important information about public transport projects in your area. If you require the services of an interpreter, please contact the Translating and Interpreting Service on **131 450** and ask them to call Transport for NSW on **1800 684 490**. The interpreter will then assist you with translation.