



Transport Access Program

Petersham Station Upgrade

Community notification

April 2021

Construction for the Petersham Station Upgrade is progressing well. Work underway includes upgrades to the footpath and ramp on Trafalgar Street, and installing concrete lift segments at the Terminus Street lift location. Activities will continue in April including:

- footpath, stair and ramp upgrade work on Trafalgar Street at the station entry
- concrete work on Terminus Street in preparation for the new lift lobby
- delivery and installation of structural steel on Terminus Street
- concrete work on the platforms (within the temporary work area) in preparation for the new lift
- station building refurbishment to provide a new accessible toilet and station services room.

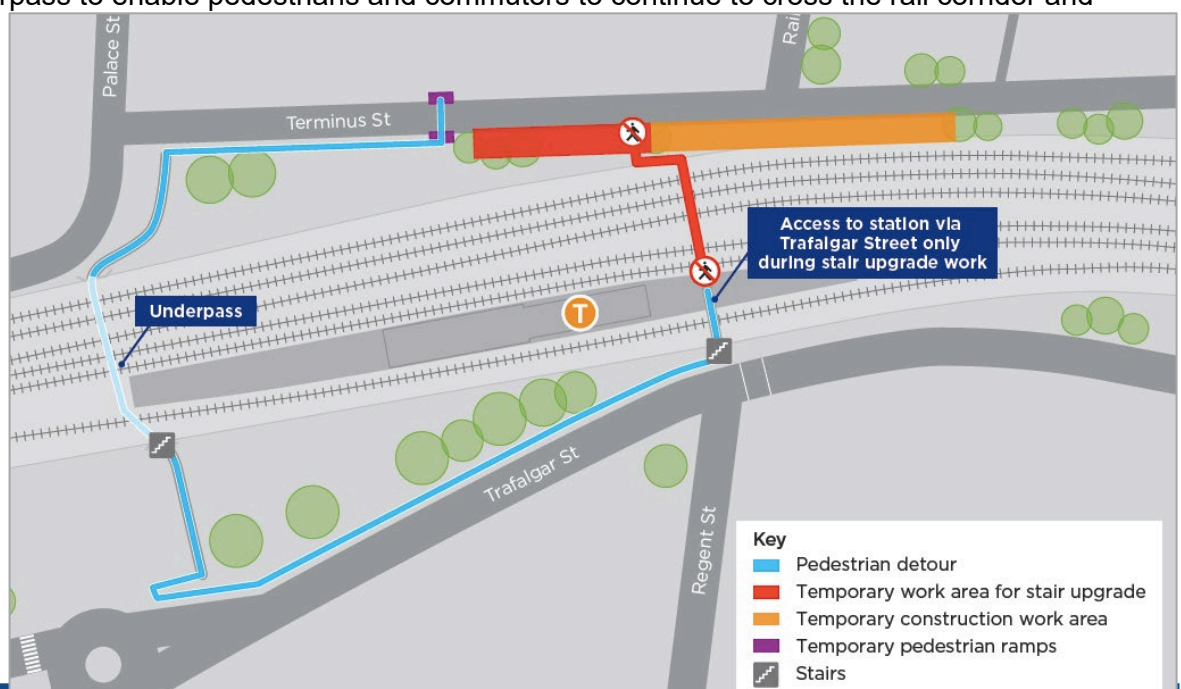
Equipment to be used include excavators, dump trucks, delivery trucks, concrete pumps, concrete trucks, truck-mounted crane, power and hand tools.

Terminus Street access changes – temporary stair closure during April

From **2am Tuesday 6 April until 4am Monday 19 April 2021** the **stairs to the station from Terminus Street will be closed** to enable upgrade work. Work includes replacing the wooden steps, installing new handrails and extending the steps at the connection to Terminus Street to reduce the steep grade. During the work, **the footbridge is open between Trafalgar Street and the stairs to the platform**. A detour is in place via the station underpass to enable pedestrians and commuters to continue to cross the rail corridor and access Petersham Station.

Please see the map for more information.

Pictured: Map of detour route during Terminus Street stair closure in April 2021.



For more information call **1800 684 490**, email projects@transport.nsw.gov.au or visit transport.nsw.gov.au/Petersham
For urgent enquiries or complaints regarding construction activities, please call 24 hours **1800 775 465**

Upcoming weekend work

To ensure the safety of our workers and the community, weekend and night work will occur during pre-determined Sydney Trains scheduled trackwork weekends in April 2021.

For up to date information about train services during these times please visit **transportnsw.info** or call **131 500**. For more information about Sydney Trains routine and regular maintenance to the rail network please contact Sydney Trains Feedback Line directly on 1300 656 999.

Dates	Work hours	Location	Activities
17 to 19 April 2021	From 2am Saturday to 4am Monday	Trafalgar Street work area and tracks Note: Station and footbridge are closed. Rail replacement buses will be available.	Work will be undertaken within the rail corridor at the station, on the platforms and at the temporary work area on Trafalgar Street. Work activities include: <ul style="list-style-type: none">installing the steel lift segments at the platform lift locationplatform regradingconcrete work on Trafalgar Streetupgrade of station power supplyrefurbishment of platform stairs. Equipment to be used includes cranes, excavators, dump trucks, delivery trucks, concrete pumps, concrete trucks, elevated work platforms, mobile lighting towers, power and hand tools.
24 and 25 April 2021	From 2am Saturday to 2am Sunday	Terminus Street work area and tracks Note: Station and footbridge are open.	Work activities includes installing the steel lift segments at the Terminus Street lift location. Equipment to be used includes cranes, delivery trucks, elevated work platforms, mobile lighting towers, power and hand tools.

Access and parking changes during 16-19 April weekend work

From **2am Saturday 17 April 2021 until 4am Monday 19 April 2021** there will be changes on **Trafalgar Street** to enable the safe operation of a crane, including:

- a temporary lane closure on Trafalgar Street (eastbound) to all vehicles (buses excepted) – **detour via New Canterbury Road or Audley Street**
- bus stop relocation – follow signage and the direction of traffic controllers when boarding/alighting rail replacement buses and other services
- station footbridge closure – detour via the station underpass or Crystal Street (step-free route).

For up to date information about traffic conditions please visit **livetraffic.com** or use the Live Traffic App.

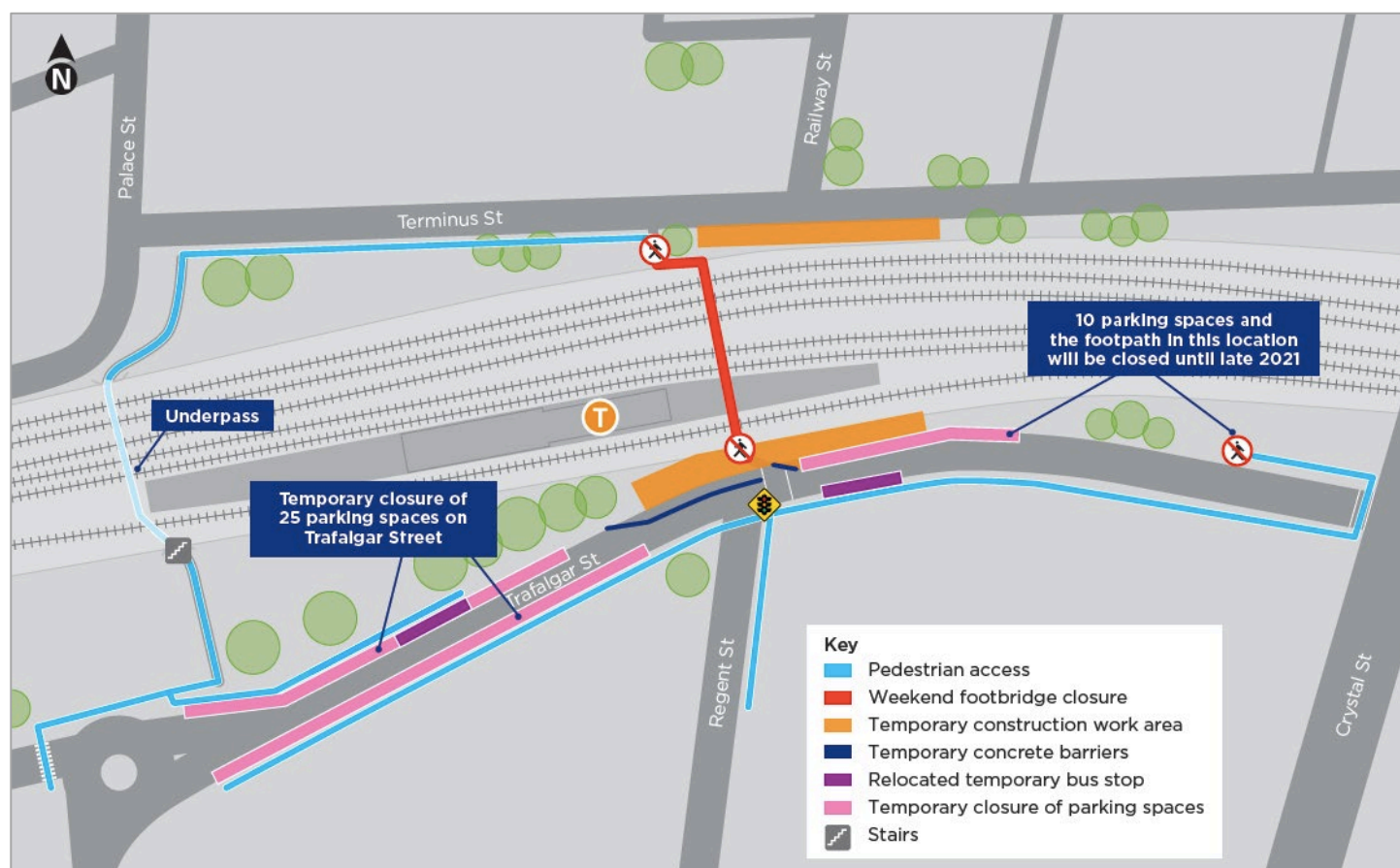
From 16 April to 19 April 2021, up to 25 parking spaces on Trafalgar Street, between Regent Street and Audley Street will be temporarily unavailable to allow the safe operation of cranes during the trackwork weekend in April:

- from 4am Friday 16 April until 4am Monday 19 April 2021, 12 spaces on the north side of Trafalgar Street will be unavailable
- from 3pm Friday 16 April until 4am Monday 19 April 2021, 13 spaces on the south side of Trafalgar Street will be unavailable.

Signage and traffic control will be in place on Trafalgar Street to assist motorists and pedestrians with these changes.

Please allow for extra travel time and thank you for your patience during this important work.

See the map below.



Temporary parking changes on Terminus Street during 24 April weekend work

From 2am Saturday 24 April until 2am Sunday 25 April 2021, Terminus Street will be temporarily closed between Railway Street and Palace Street to enable the safe operation of two cranes. A local traffic diversion will be in place, and residents will be given priority access to/from Terminus Street during this work with traffic control operating and permitting access to/from driveways. **Please use Brighton Street** while Terminus Street is closed.

Up to 10 parking spaces on Terminus Street, near Railway Street will be temporarily unavailable to allow two large cranes to safely operate from 2am Saturday 24 April until 2am Sunday 25 April 2021.

Traffic control and signage will be in place to assist motorists with these changes. See the map overleaf.

Thank you for your patience during this important work.



Male toilet entry door change

Parts of the existing male toilets will be closed while the toilets are refurbished. Entry to the male toilets will be from the Platform 1 side of the station building until **late 2021**. Both male and female toilets will remain open at the station during the duration of the project.

Keep in touch

If you would like to be added to the project distribution email list, or for more information on the Petersham Station Upgrade, please contact us on **1800 684 490** or email **projects@transport.nsw.gov.au**.



This document contains important information about public transport projects in your area. If you require the services of an interpreter, please contact the Translating and Interpreting Service on **131 450** and ask them to call Transport for NSW on **1800 684 490**. The interpreter will then assist you with translation.