



Transport Access Program

Petersham Station Upgrade

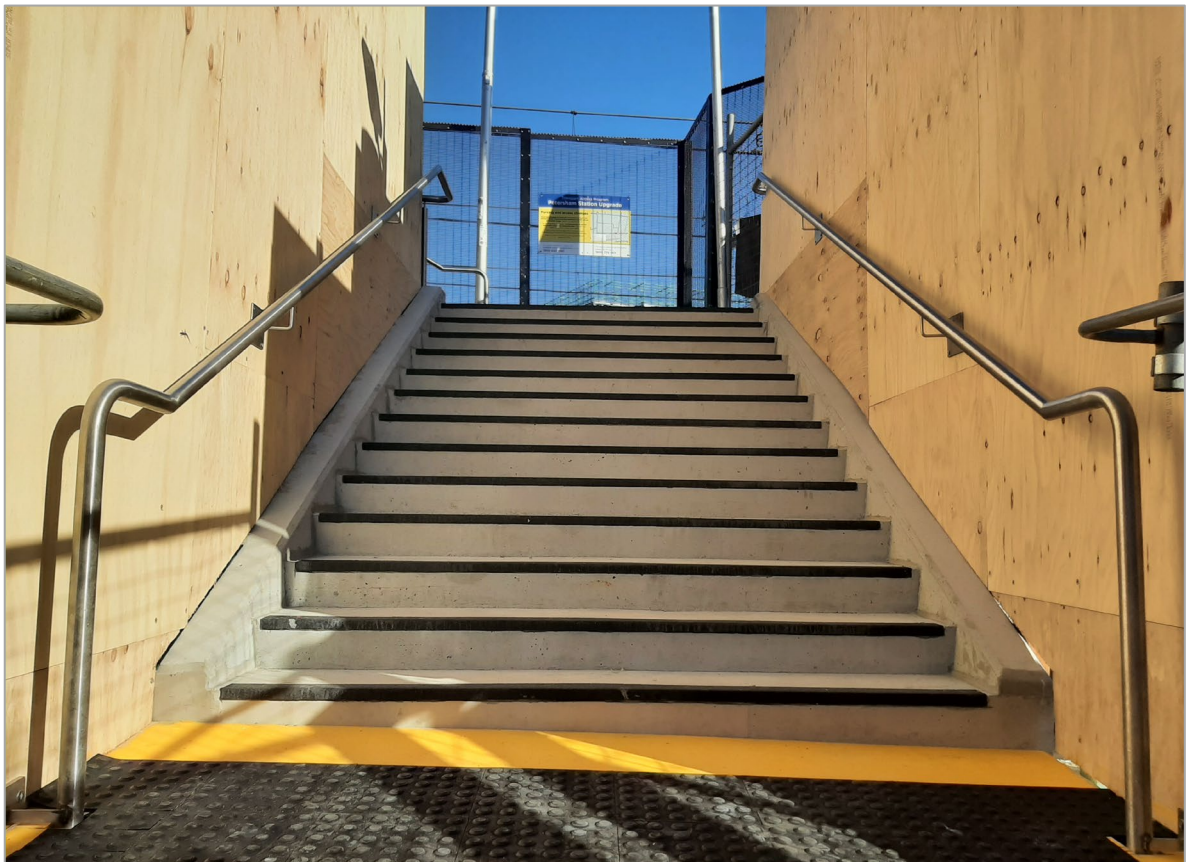
Community notification

May 2021

Construction for the Petersham Station Upgrade is progressing with upgrades to the Terminus Street and platform stairs. Activities will continue in May including:

- footpath, stair and ramp upgrade work on Trafalgar Street at the station entry
- concrete, structural steel and civil work on Terminus Street
- construction of lift lobby on Terminus Street
- concrete work on the platforms (within the temporary work area) in preparation for the new lift
- station building refurbishment to provide a new accessible toilet and station services room.

Equipment to be used include excavators, dump trucks, delivery trucks, concrete pumps, concrete trucks, truck-mounted crane, power and hand tools.



Pictured: stair upgrade work at the Terminus Street entrance, Petersham Station.

Upcoming weekend work

To ensure the safety of our workers and the community, weekend and night work will occur during pre-determined Sydney Trains scheduled trackwork weekends in May 2021.

For up to date information about train services during these times please visit transportnsw.info or call **131 500**.

Dates	Work hours	Location	Activities
1 to 3 May 2021	4am Saturday to 2am Monday	Terminus Street work area and tracks Note: Station and footbridge remain open.	Work will be undertaken at the Terminus Street entrance, within the rail corridor at the station and on platforms. Work activities include: <ul style="list-style-type: none">• continued work to the lift shaft• services work Equipment to be used includes cranes, delivery trucks, elevated work platforms, mobile lighting towers, power and hand tools.
15 to 17 May 2021	6am Saturday to 4am Monday	Trafalgar Street work area and station platform Note: Station and footbridge will be closed.	Work will be undertaken within the rail corridor at the station, on the platforms and at the temporary work area on Trafalgar Street. Work activities include: <ul style="list-style-type: none">• platform resurfacing• concrete work• lift and canopy glazing and flashing• installation of guttering and downpipes• services upgrade work. Equipment to be used include excavators, portable lifts, dump trucks, mobile lighting towers, concrete trucks and pumps, power and hand tools.
22 to 24 May 2021	4am Saturday to 2am Monday	Terminus Street work area and tracks Note: Station and footbridge remain open.	Work will be undertaken at the Terminus Street entrance, within the rail corridor at the station and on platforms and tracks. Work activities include: <ul style="list-style-type: none">• hoarding removal works• concrete finishing work on lift shaft• downpipe installation• track rectification works Equipment to be used includes excavators, delivery trucks, elevated work platforms, mobile lighting towers, power and hand tools.

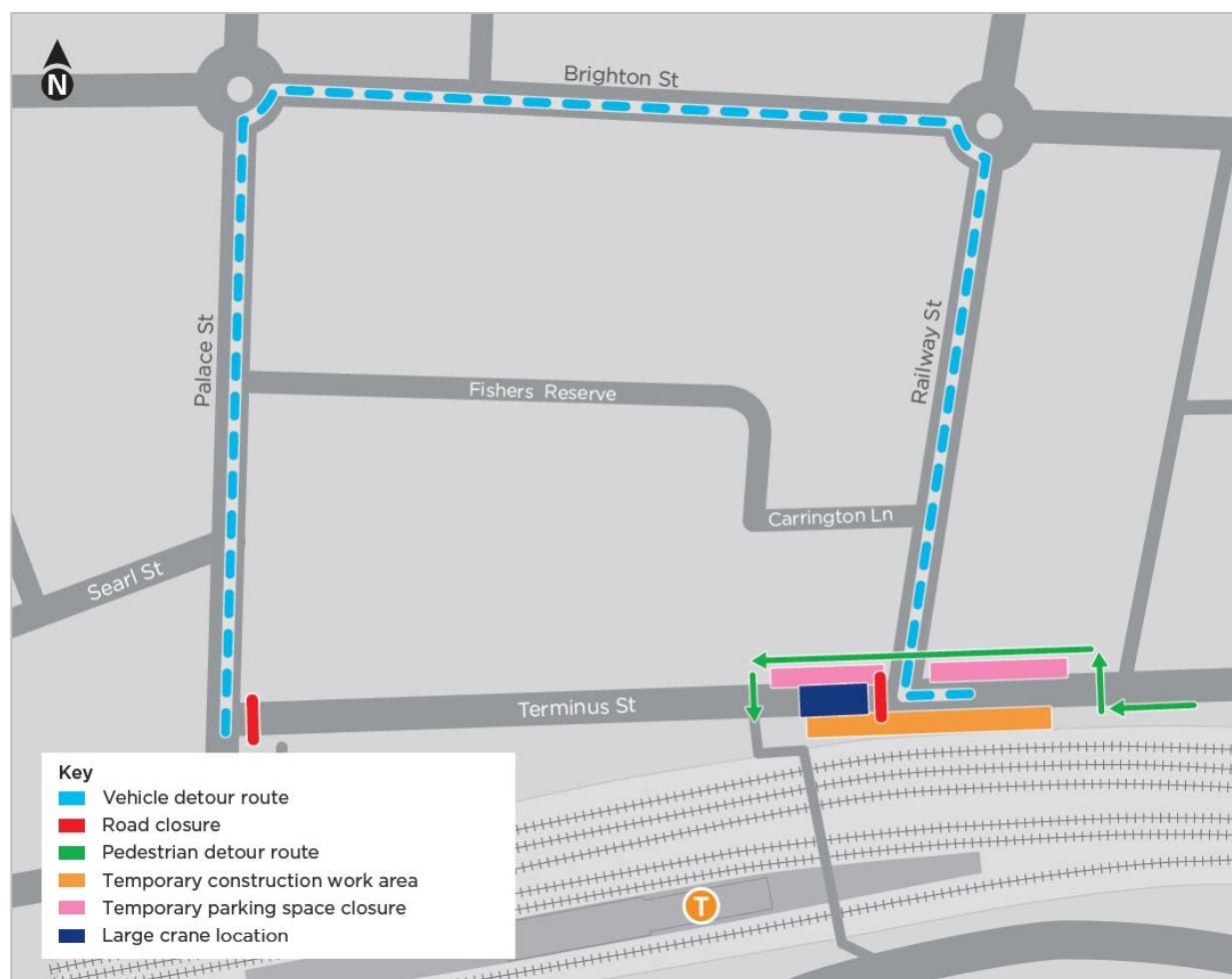
Temporary access and parking changes on Terminus Street during 1-3 May and 22-24 May weekend work

From **4am Saturday 1 May to 2am Monday 3 May 2021**, and from **4am Saturday 22 May to 2am Monday 24 May**, Terminus Street between Railway Street and Palace Street will be temporarily closed to enable the safe operation of a crane.

A local traffic diversion will be in place, and residents will be given access to/from Terminus Street during this work with traffic control operating and permitting access to/from driveways. **Please use Brighton Street** while Terminus Street is closed. See the map below.

Up to 10 parking spaces on Terminus Street, near Railway Street will be temporarily unavailable to allow a large crane to safely operate from **4am Saturday 1 May to 2am Monday 3 May 2021** and from **4am Saturday 22 May to 2am Monday 24 May**. We will endeavour to complete this work as soon as possible to reduce impacts.

Traffic control and signage will be in place to assist motorists with these changes. Thank you for your patience during this important work.



Temporary access changes during 15-17 May weekend work

From **6am Saturday 15 May 2021** until **4am Monday 17 May 2021** the station and station footbridge will be closed. Please detour via the station underpass or Crystal Street (step-free route). See map overleaf for more information.

Signage will be in place on Trafalgar and Terminus Street to assist pedestrians with these changes. Please allow for extra travel time and thank you for your patience during this important work.



Construction hours

To support the construction industry and continue the delivery of important infrastructure, the NSW Government has introduced new rules allowing construction sites to operate on weekends and public holidays.

Standard construction hours are from 7am to 6pm every day, including public holidays. These changes have been made to facilitate physical distancing on construction sites and support the health and wellbeing of workers.

We understand extending construction hours to include weekends and public holidays may cause disruption, but all efforts will be made to minimise impacts where possible and ensure strict environmental conditions relating to noise, vibration and dust management are adhered to. If you experience unacceptable noise, please call **1800 775 465**.

Keep in touch

If you would like to be added to the project distribution email list, or for more information on the Petersham Station Upgrade, please contact us on **1800 684 490** or email **projects@transport.nsw.gov.au**.



This document contains important information about public transport projects in your area. If you require the services of an interpreter, please contact the Translating and Interpreting Service on **131 450** and ask them to call Transport for NSW on **1800 684 490**. The interpreter will then assist you with translation.